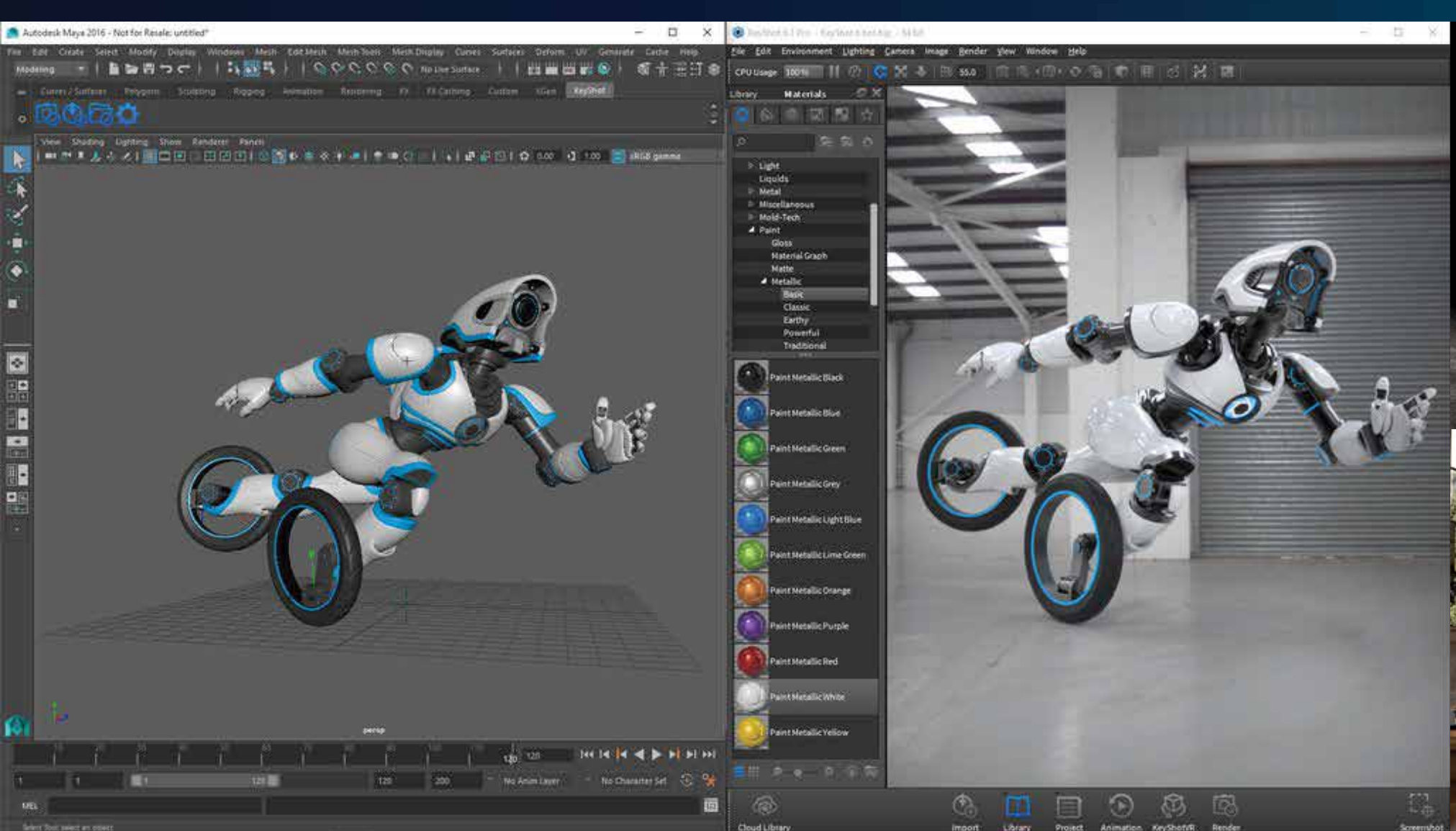
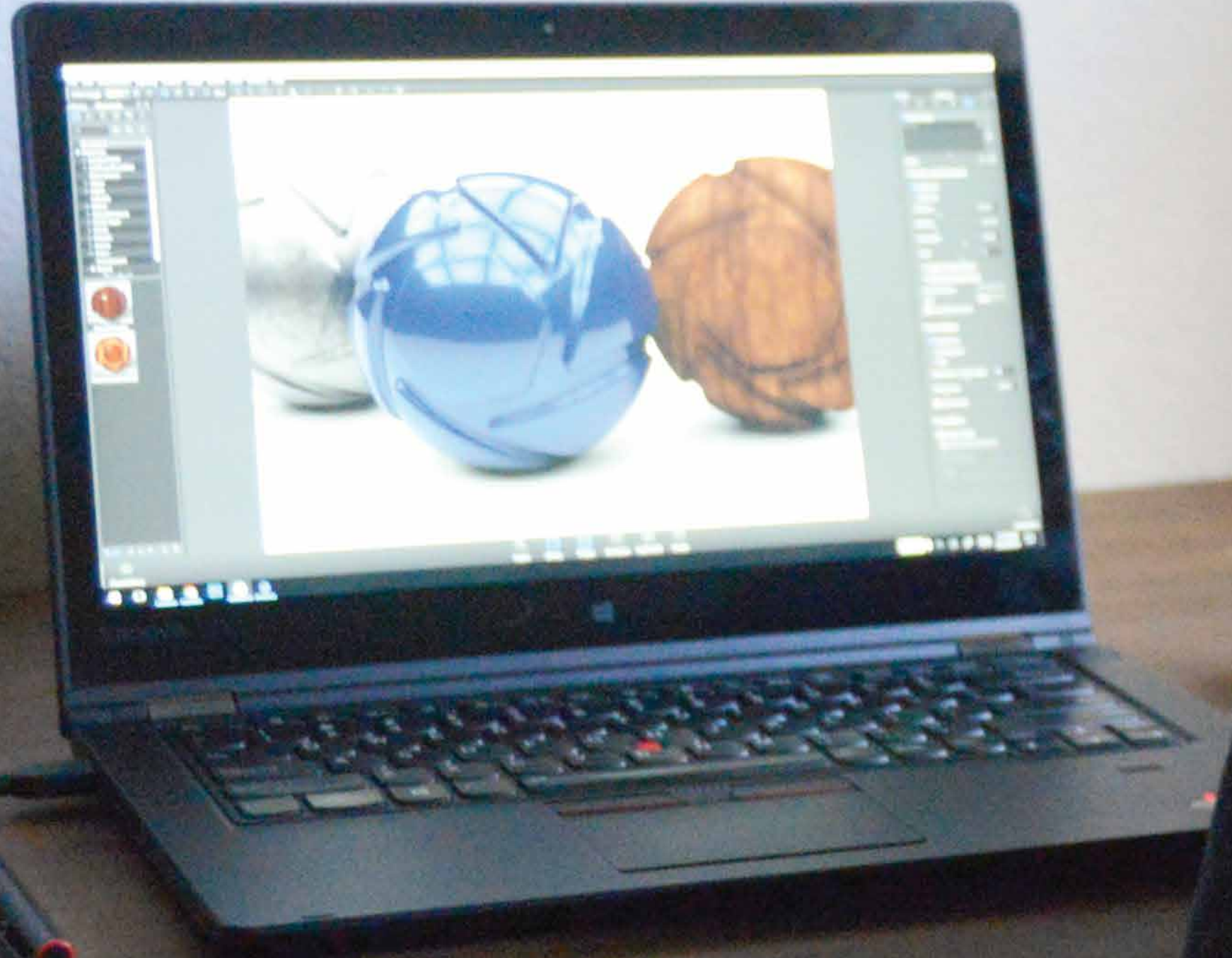


For realistic renders,  
you need powerful systems.



Architects, engineers, and product designers use KeyShot, an advanced rendering and animation software from Luxion Inc., to realize their visions in 3D. But to fully take advantage of KeyShot's capabilities, they need a flexible mobile workstation—the Lenovo™ ThinkPad® P40 Yoga™.

“ The Lenovo ThinkPad P40 Yoga is by my side almost all the time. I’m able to use KeyShot much more efficiently than I’ve been able to before, and I have everything on one computer instead of on a workstation or on a laptop. ”



**Josh Mings**  
KeyShot user  
Director of Marketing for Luxion Inc.



With the ThinkPad P40 Yoga, Josh can keep all his work on one system.

It gives him the processing power of a workstation with the mobility, flexibility, and multi-touch capabilities of a tablet. The precise, integrated pen leverages Wacom® Active ES™ technology, letting Josh easily interact with even the smallest KeyShot menus.



In addition, KeyShotVR lets users build interactive, touch-enabled KeyShot models that open in a browser. The ThinkPad P40 Yoga has made it easier than ever for Josh to show off KeyShotVR at conventions and in sales conversations.

With the ThinkPad P40 Yoga, Josh and his customers and clients can use intuitive touch movements to easily manipulate KeyShotVR models like never before.

“ We’ve been selling KeyShotVR for a while, but we haven’t been able to present it in the way we are now. Before we started using the ThinkPad P40 Yoga, we had to open the models on laptops and use a mouse to move them around. Touch is the best way to interact with the models, but tablets out there now don’t have enough power to run KeyShotVR.

This has been the first computer that has let me do rendering work in KeyShot and present in KeyShotVR using touch.”

Josh Mings



 **NVIDIA**. QUADRO®



NVIDIA® Quadro® professional graphics and the high-resolution screen of the ThinkPad P40 Yoga show 3D KeyShotVR models in crystal-clear detail. Combining world-class graphics with strong processing power, the ThinkPad P40 Yoga keeps KeyShotVR models glitch- and stutter-free for a worry-free experience.

As they manipulate the models, Josh's customers can let their imaginations run wild.

The multi-touch capabilities of the light and portable ThinkPad P40 Yoga let KeyShot users interact with KeyShotVR models in a natural, intuitive way.

The ThinkPad P40 Yoga offers multiple modes that let customers optimize the device for the task at hand. With Tablet mode, users easily manipulate models and get a closer look at the details. Then they can flip to Laptop mode to take care of in-depth modeling and rendering work.





“

When we have KeyShotVR models set up on the ThinkPad P40 Yoga at events, people have been impressed about what this computer is. It's drawn a lot of interest and helped us to show KeyShot's capabilities from a tablet and touch interaction perspective. It's been a great tool to showcase our products.

”

**Josh Mings**



# Lenovo ThinkPad P40 Yoga



## Workstation-level performance and display



NVIDIA Quadro M500M GPU with 2GB VRAM

6th generation Intel® Core™ i7 processors

3K IPS display with ultra-sensitive touch capabilities

## Unique engineering

Lift 'n Lock keyboard protects keys with an automatic rising frame for more comfort and efficiency

360-degree hinge for maximum flexibility



## Infinite flexibility

Precise pen features Wacom Active ES technology with industry-best 2048 levels of pressure sensitivity

Super-capacitive built-in charging for integrated pen

Multiple modes give users more flexibility for a variety of tasks

## Superior reliability

MIL-SPEC tested, built for maximum durability

Constructed from premium materials, including advanced carbon fiber and magnesium

ISV certified to ensure excellent performance for your most demanding applications