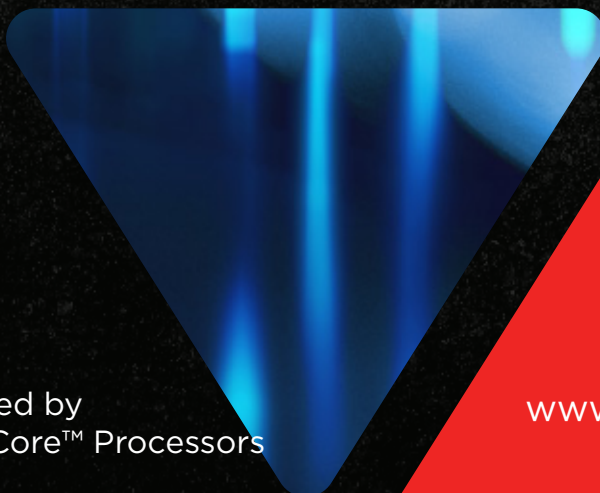


V1.0 FYQ1 2019

MODERN LAPTOP SOLUTIONS TO DRIVE MOBILITY IN THE FINANCIAL SERVICES INDUSTRY



Powered by
Intel® Core™ Processors

www.lenovo.com

EQUIPPING THE FINANCIAL SERVICES INDUSTRY WITH NEXT-GEN TECHNOLOGY

The Financial Services Industry has always been the fastest to acknowledge and adapt to newer technologies. It is therefore not surprising that technologies like AI, Robotic Process Automation (RPA) analytics, IoT, and Big Data are shaping it today. To keep up with the constantly evolving customers of today, organizations need to be a step ahead especially with regard to technology. They not only need high-performing devices but also highly secure devices. Here are some common challenges financial services organizations face today:

- Upgrading legacy infrastructure
- Mitigating security risk
- Adapting to newer technologies

To overcome these hurdles, businesses must invest in a technology architecture that enables their workforces to achieve maximum efficiency and enhance customer experiences. **Lenovo has a comprehensive portfolio of hardware and software solutions designed to transform the financial services industry for the needs of tomorrow.**

WHY LENOVO LAPTOPS AND TABLETS FOR FINANCIAL SERVICES

The legendary ThinkPads, Lenovo laptops, and tablets are designed to offer exceptional performance. From sales pitches to presentations, audits, analyzing reports, preparing graphs, or creating annual sales reports, these mobile devices offer unparalleled productivity. Powered with the latest generation processors, robust security, maximum durability, ample storage, and super fast memory, these ultraportable devices are designed for improved efficiency.



Powered by
Intel® Core™ Processors

THINKPAD E580 (15.6") AND THINKPAD E480 (14")

BUSINESS-READY LAPTOPS
TO BOOST PROFITS

Processor	Storage	Battery	Memory	Security
8 th Generation Intel® Core™ Processor	Up to 1TB HDD, Up to 512GB SSD	Up to 13 hours*	8GB LPDDR3 1866MHz	dTPM 2.0, optional Touch Fingerprint Reader

TARGET USER

Professionals with basic needs like email and administrative support, who also need to travel frequently.

USE CASE

Client Sales and Servicing

Client facing professionals in the financial services industry like financial planners and portfolio managers can stay productive on the move with the **8th Generation Intel® Core™ Processor**. Also, the **dTPM 2.0 chip** encrypts all their sensitive financial data and passwords ensuring complete data security.



*Based on testing with MobileMark 2014. Battery life varies significantly with settings, usage, and other factors.



Powered by
Intel® Core™ Processors

ACCESSORIES



SEAMLESS MULTITASKING



THINKPAD USB-C DOCK

Key Feature

High-speed data transfers at 40Gbps

Use Case

Financial planners on the move can transfer sensitive data easily, while charging their device simultaneously.

MINIMALIST BAG FOR EASY MOBILITY



THINKPAD PROFESSIONAL 15.6" TOPLOAD

Key Feature

Sleek carry case that enables mobility

Use Case

Financial advisors who need to travel frequently to meet clients can carry their device and accessories with ease.

THINKPAD T480 (14") AND THINKPAD T580 (15")

RELIABLE PERFORMER
TO BRING IN THE BIG NUMBERS

Processor	Storage	Battery	Memory	Security
8 th Generation Intel® Core™ Processor	High-speed SSD	Up to 27 hours*	Up to 32GB DDR4 2400MHz, 16GB Intel® Optane™ memory	FIDO authentication, dTPM 2.0, optional MoC Touch Fingerprint Reader, ThinkShutter camera cover

TARGET USER

Professionals with advanced needs like analyzing large volumes of complex data, who also travel extensively.

USE CASE

Customer Analytics and CRM

Professionals in the financial services industry who manage large volumes of customer data like financial analysts can multitask easily with the **Intel® Turbo Boost** technology. They can also view data clearly as these devices come with **Discrete Graphics**.



THINKPAD T580



THINKPAD T480



Powered by
Intel® Core™ Processors

*with dual battery combo

THINKPAD T480s (14")

DESIGNED FOR
HIGHER PROFITS AND PRODUCTIVITY

Processor	Storage	Battery	Memory	Security
8 th Generation Intel® Core™ Processor	M.2 PCIe SSD	Up to 15.6 hours*	Up to 24GB DDR4 2400MHz	FIDO authentication, dTPM 2.0, optional MoC Touch Fingerprint Reader, ThinkShutter camera cover

TARGET USER

Professionals who need to run complex software or access Cloud-based services on the move.

USE CASE

Customer Analytics and CRM

Professionals in the financial services industry who manage large volumes of customer data like portfolio managers can rely on the ThinkPad T480s to run complex financial software and multitask on the go with the **Intel® Turbo Boost** technology. They can also transfer data at high speed using the built-in Thunderbolt™ 3 port, while being rest assured that the **dTPM 2.0** chip keeps all their sensitive data encrypted and safe.



THINKPAD T480s

*Based on testing with MobileMark 2014. Battery life varies significantly with settings, usage, and other factors.

HIGHLIGHT TECH

CUSTOMER ANALYTICS AND CRM

Discrete Graphics

enable stockbrokers to view complex datasets in great detail.

Intel® Turbo Boost

allows credit analysts to switch between multiple applications.

Intel® Optane™ Memory

accelerates PC performance while handling intensive workloads.

DEVICE SECURITY

Intel® Transparent Supply Chain

gives IT admins more visibility into their laptops' hardware.

dTPM 2.0 Chip

provides hardware-based security that encrypts data to help prevent theft.

DATA SECURITY

Intel® Data Guard

is a hardware-based solution that offers encrypted file and folder protection.

Intel® Remote Secure Erase

allows IT managers to securely wipe data from stolen devices or from laptops that have been compromised.

IDENTITY SECURITY

MoC Fingerprint Reader

provides biometric user authentication to help prevent unsecure logins.

IR Camera

with Windows Hello prevents unauthorized logins.

Intel® Authenticate

is a multifactor hardware-based security feature that protects against data compromise.

AGILITY WITH MODERN IT

Intel® vPro™

allows IT admins to easily manage and maintain a fleet of remote mobile devices.

ACCESSORIES

COMPLETE DATA SAFETY

Key Feature

Prevents unauthorized access to the device

Use Case

Finance professionals can prevent unauthorized usage of their device and prevent data from being stolen.



LENOVO FINGERPRINT BIOMETRIC USB MOUSE

EASY INPUTS AND EDITS

Key Feature

Easy data inputs on the go

Use Case

Sales executives can enter numbers or modify them on spreadsheets on the move.



LENOVO NUMERIC KEYPAD II

ROBUST SECURITY

Key Feature

Physical screen filter to prevent data theft

Use Case

Analysts working on sensitive financial data can secure their data from prying eyes.



LENOVO PRIVACY FILTERS FROM 3M

PHYSICAL PROTECTION FOR DEVICES

Key Feature

Physical device security

Use Case

Financial analysts can physically secure their device to an immovable object to prevent theft.



KENSINGTON™ LOCK

SEAMLESS MULTITASKING

Key Feature

Daisy chain up to two monitors with just one cable from the source device

Use Case

Sales executives can validate complex reports before leaving for client meetings.



Powered by Intel® Core™ Processors



UNMATCHED USER PRIVACY

Key Feature

Ensures user privacy

Use Case

Portfolio managers can simply slide the physical shutter over their device camera when done with their video call to ensure maximum privacy.



THINKSHUTTER CAMERA COVER

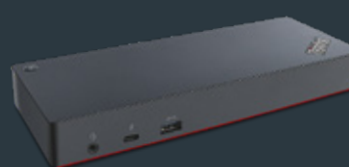
SUPERIOR CONNECTIVITY

Key Feature

High-speed data transfers

Use Case

Stock traders can transfer data at 40Gbps speed and connect three FHD displays for efficient data analysis.



THINKPAD THUNDERBOLT™ 3 DOCK GEN 2

LENOVO TABLET 10 (10.1”)

ACCELERATE MOBILITY.
ELEVATE PROFITABILITY.

Processor	Storage	Battery	Memory	Security
Intel® Celeron® Processor	Up to 128GB eMMC	Up to 8.5 hours*	4GB LPDDR4 2133MHz	dTPM, Touch Fingerprint Reader

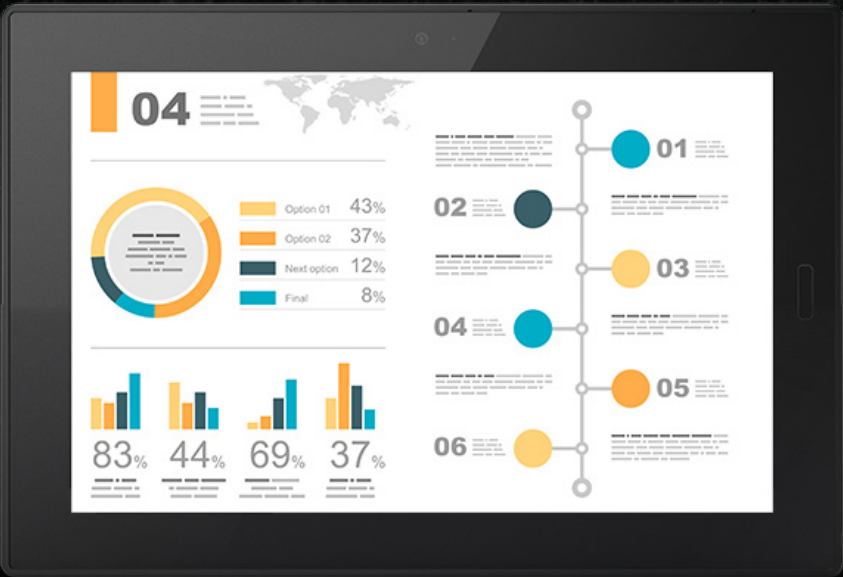
TARGET USER

Professionals who need to be more flexible and mobile.

USE CASE

Customer Analytics and CRM

Professionals in the financial services industry who manage large volumes of customer data like portfolio managers can stay connected on the move with the advanced **4G wireless networking** feature. The optional **digital pen** allows them to take notes or digitally sign documents.



LENOVO TABLET 10

*Based on testing with MobileMark 2014. Battery life varies significantly with settings, usage, and other factors.



Powered by
Intel® Core™ Processors

ACCESSORIES



ON-THE-GO EFFICIENCY



LENOVO TABLET 10 KEYBOARD

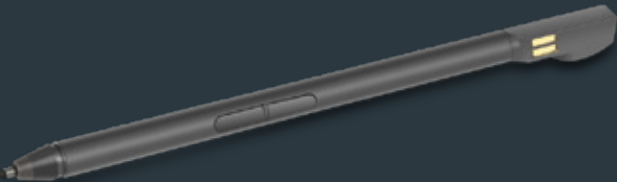
Key Feature

Expand the capability of a tablet

Use Case

Sales executives can attach the optional keyboard to their tablets and create a basic notebook to work on spreadsheets and audit reports on the go.

ON-THE-GO COMPANION



LENOVO TABLET 10 ACTIVE PEN

Key Feature

Taking notes on the move

Use Case

Sales executives can annotate and digitally sign documents while shuttling from one meeting room to the other.

THINKPAD X1 TABLET GEN 3 (12")

PREMIUM DEVICE
THAT MULTIPLIES PROFITS

Processor	Storage	Battery	Memory	Security
8 th Generation Intel® Core™ Processor	256GB PCIe SSD OPAL 2.0	Up to 9.5 hours*	8GB LPDDR3 1866MHz	dTPM 2.0, Touch Fingerprint Reader, FIDO certification

TARGET USER

Professionals who require premium security features on the move.

USE CASE

Client Sales and Servicing

Client facing professionals in the financial services industry can work on the go while keeping their data and device safe with **onboard data encryption** and optional **fingerprint reader** security features.



THINKPAD X1 TABLET GEN 3

*Based on testing with MobileMark 2014. Battery life varies significantly with settings, usage, and other factors.



Powered by
Intel® Core™ Processors

ACCESSORIES

BETTER USER COMFORT



THINKPAD X1 TABLET SLEEVE

Key Feature

Makes the tablet more flexible

Use Case

Financial professionals can use the ThinkPad X1 Tablet in different use modes like Tablet Standalone, Tablet with Keyboard, and Tablet with Module.

IMPRESSIVE ANNOTATION



THINKPAD PEN PRO

Key Feature

Efficient note taking

Use Case

Sales executives can annotate critical documents while working on the go.

KEEP PRYING EYES AWAY



LENOVO PRIVACY FILTER FOR X1 TABLET
GEN 3 FROM 3M

Key Feature

Prevent data theft

Use Case

Analysts working on sensitive financial data can secure their data from prying eyes.

5 REASONS WHY LENOVO IS A DIFFERENCE MAKER



Trusted
around
the world



Expertise
across
categories



Confidence
in our
products



Business-
boosting
technology



Flexible
support
network

Lenovo



Powered by
Intel® Core™ Processors

Intel, the Intel Logo, Intel Inside, Intel Core, and Core Inside are trademarks of Intel Corporation or its subsidiaries in the U.S. and/or other countries.

©2019 Lenovo. All rights reserved. These products are available while supplies last. Prices shown are subject to change without notice. For any questions concerning price, please contact your Lenovo Account Executive. Lenovo is not responsible for photographic or typographic errors. Warranty: For a copy of applicable warranties, write to: Warranty Information, 500 Park Offices Drive, RTP, NC 27709, Attn: Dept. ZPYA/B600. Lenovo makes no representation or warranty regarding third-party products or services. Trademarks: Lenovo, the Lenovo logo, Rescue and Recovery, ThinkPad, ThinkCentre, ThinkStation, ThinkVantage, and ThinkVision are trademarks or registered trademarks of Lenovo. Microsoft, Windows, and Vista are registered trademarks of Microsoft Corporation. Intel, the Intel logo, Intel Inside, Intel Core, and Core Inside are trademarks of Intel Corporation in the U.S. and/or other countries. Other company, product, and service names may be trademarks or service marks of others.

www.lenovo.com