

Smarter
technology
for all

Lenovo

Your #1 priority:
Software and services for
educators and students



01

Security, Safety, and
Device Management

Pages 4-10



Lenovo NetFilter

Make internet safety simpler



Absolute Software

Endpoint visibility and control



SentinelOne

AI-driven endpoint security



Google Workspace

Cloud computing, productivity,
and collaboration tools

02

Instructional resource

Pages 11-16



LanSchool

Classroom management software



Creativity Apps for Chromebooks

• Book creator • WeVideo • Squid
• Explain Everything • Infinite Painter



Veative

Immersive learning solutions

03

Services & Solution

Pages 17-25

Accidental Damage Protection

Protected against the unexpected

Asset Recovery Services

Maximise value, minimise environmental
impact

CO2 Offset Services

Sustainability made simple

Configuration Solutions

Reduce operational costs and help students
and educators get productive, fast.

Premier Support

All your questions answered — from basic
how-tos to advanced troubleshooting

Premium Care

Get the best from your new device



01

Security, Safety, and Device Management



Lenovo NetFilter

Make internet safety simpler



Absolute Software

Endpoint visibility and control



SentinelOne

AI-driven endpoint security



Google Workspace

Cloud computing, productivity, and collaboration tools

Make internet safety simpler

You are tasked with safeguarding faculty and students in online-learning environments. Your IT teams also needs to protect your institution against viruses, spyware, phishing frauds and ransomware.



64%

of children ages 10-18 surveyed in 11 EU countries say they have been bothered or upset by something they have seen online

55%

of 12-15-year-old children surveyed from the UK said they had experienced some form of negative online experience

\$2,000,000

is the median amount stolen from US school districts via phishing attacks

611,000

unique phishing sites worldwide in Q1 of 2022



Protect students, staff, and network

- Protect users from content in over 40 languages – with ten 10 interface language options.
- Sophisticated real-time detection picks up dangerous new domains as they pop up – so users are safer from harmful content online.
- Lenovo NetFilter helps protect your entire system from viruses, spyware, phishing frauds and other forms of malicious code, so learners and educators can safely enjoy online learning.



Manage effectively

- Since Lenovo NetFilter is compatible with Mac, Windows, and Chromebooks, you don't need to plan for extra configuration steps before users are protected.
- Users are protected both on-campus and at home and it easily integrates with existing IT.
- Lenovo NetFilter lets you manage one or multiple schools through a single dashboard.
- You can set your own criteria for access to Facebook, Twitter, YouTube and other platforms.
- Built-in reporting means that compliance is easy. You'll comply with regulations required by CIPA, COPPA, the Internet Watch Foundation, and Friendly Wi-Fi.



Upgrade to enhance protection

- Upgrade to Lenovo NetFilter+ for enhanced student safety.
- Real-time keystroke alerts for digital dangers, including cyberbullying, threats of violence, and suicidal ideation.
- Scheduled, customizable reporting and screen captures give admins insight into how to better protect students.

Lenovo NetFilter integrates with:

- LDAP
- Active Directory
- Directory
- Radius
- Captive Portal
- Microsoft IIS
- Authenticated Redirect Portal
- Single Sign On (SSO) for Google and Microsoft.

Helps take care of compliance:

- CIPA
- COPPA
- The Internet Watch Foundation
- Friendly Wi-Fi

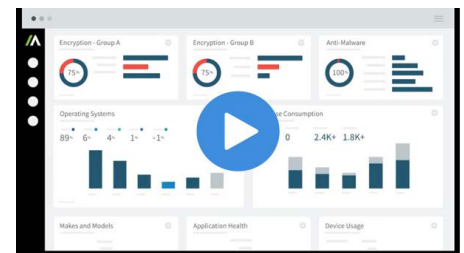
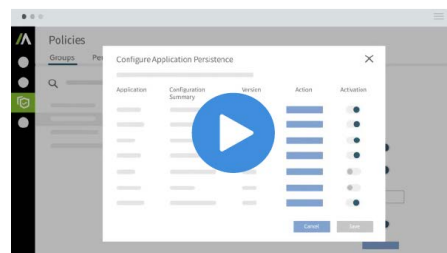
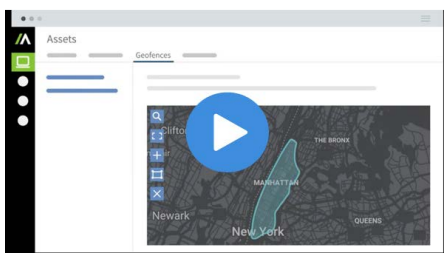
Make learning unbreakable

Manage and secure your educational devices and data with a persistent, undeletable connection.



What makes Absolute different?

Absolute is the only endpoint security solution factory-installed by most major PC manufacturers. Since it is embedded in over half a billion endpoints, all you need to do is activate it for instant visibility and control.



Full endpoint visibility

- Geolocate any device
- Risk alerts when controls are being bypassed
- Flag security issues — ensures CIPA compliance
- Know where all your sensitive data lives so you can protect it
- Usage reports for device and software utilization and website monitoring

Unbreakable security control

- Remote repairs and self-healing of critical software, even if reimaged or the hard drive is replaced
- Keeps critical applications like SCCM, antivirus, and VPN always installed and healthy
- Remote freeze and wipe

Deploy easily and manage from anywhere

- Easily manage all devices from a unified, cloud-based console
- Persistent controls and configurations
- Manage at scale using automated workflows

▶ Watch the video

▶ Watch the video

▶ Watch the video

Technical requirements for the Absolute agent:

- Windows 7, 8.1, or 10 (32 and 64 bit)
- Mac OS X 10.6 or later
- Android 4.4.2 or later
- Absolute Chromebook extension deployed through Google Admin Console

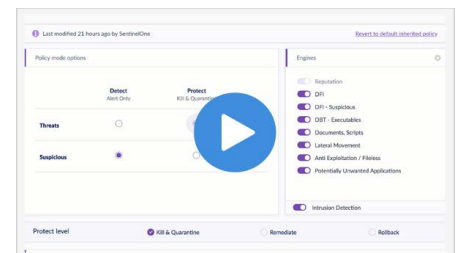
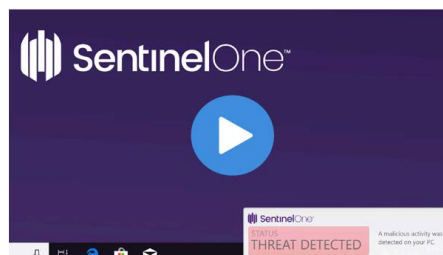
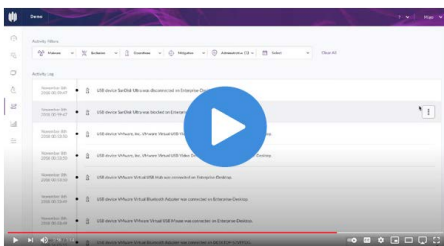
Prevent tomorrow's security threats today

Protect your school's networks with SentinelOne's AI-driven cybersecurity solutions that safeguard your valuable student data against advanced threats with autonomous protection, detection, and response.



What makes SentinelOne different?

The autonomous endpoint protection saves you time by using multiple AI engines, providing visibility into all endpoints, and even rolling back threats, with a single agent.



Visibility and control of attack surface

- Protect infrastructure from IoT attacks and compromised devices
- No hardware or network changes
- Manage device-based risk with Firewall Control and Device Control for USB and Bluetooth

Automated detection and remediation

- AI-based prevention and detection that acts in real time
- Automatic or 1-click remediation and rollback
- Works without cloud connectivity

Centralized and flexible management

- Unify operations and administration with one agent and console
- Easy to deploy and manage
- Flexibility of custom administrative roles and site setup
- Can be deployed as cloud SaaS, hybrid, or on-premises

[▶ Watch the video](#)

[▶ Watch the video](#)

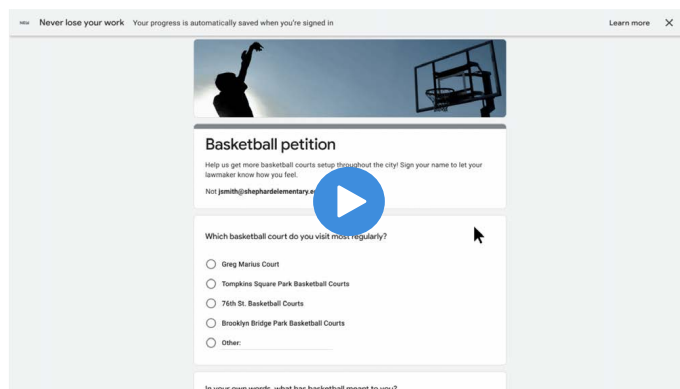
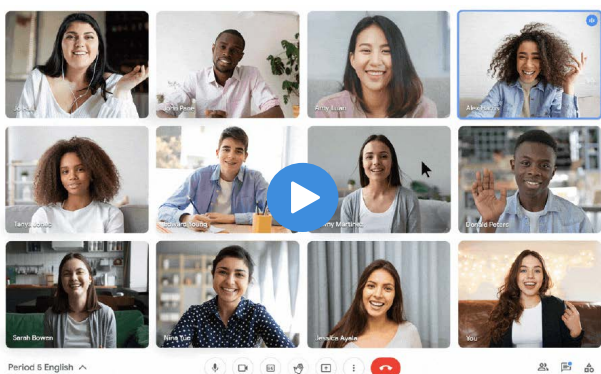
[▶ Watch the video](#)

Technical requirements:

- SentinelOne offers clients for
- Windows including legacy OSs such as Windows XP

Transform teaching and learning

Google Workspace for Education provides school communities with tools that elevate teaching, learning, collaboration, and productivity — all on one secure platform.

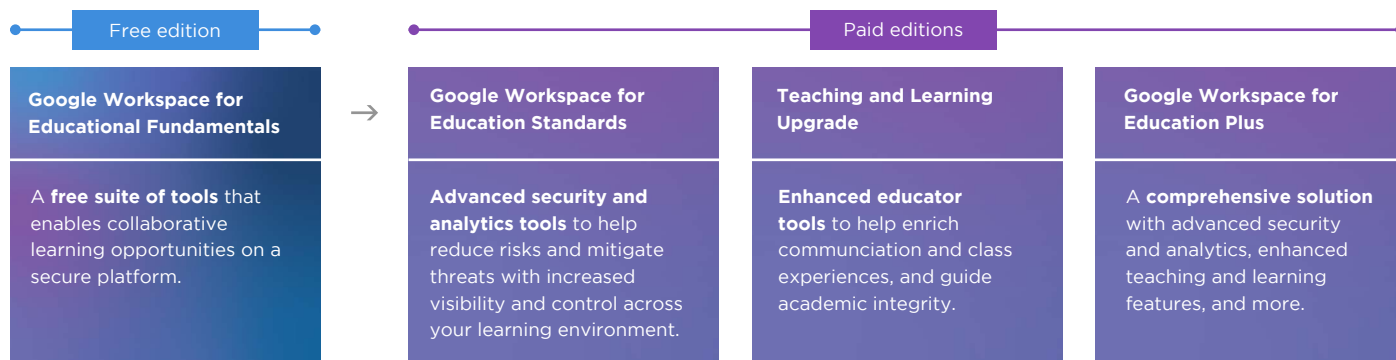


Simple and secure

- Engage your school community with easy-to-use tools that let individuals confidently communicate, collaborate, teach, and learn.
- Trust in multi-layer, built-in security that meets rigorous privacy and compliance standards.

Helpful and flexible

- Real-time collaboration, instant connection, and efficient productivity help everyone stay focused on teaching and learning.
- Leverage tools that evolve with the unique needs of your institution.



Resources:

- Visit the [Google Workspace for Education website](#)

9 Security, Safety, and Device Management

Technical requirements:

- See [Google Workspace Migration requirements](#)





02

Instructional resource



LanSchool

Classroom management software



Creativity Apps for Chromebooks

• Book creator • WeVideo • Squid
• Explain Everything • Infinite Painter



Veative

Immersive learning solutions

Lenovo's classroom management solution that transforms teaching

Create meaningful 1:1 learning moments with Lenovo's classroom management software, LanSchool. As a pioneer and innovator in education, Lenovo's LanSchool has provided reliable, award-winning classroom management products for over 30 years.

Guide learning in a safe, online environment with features like:

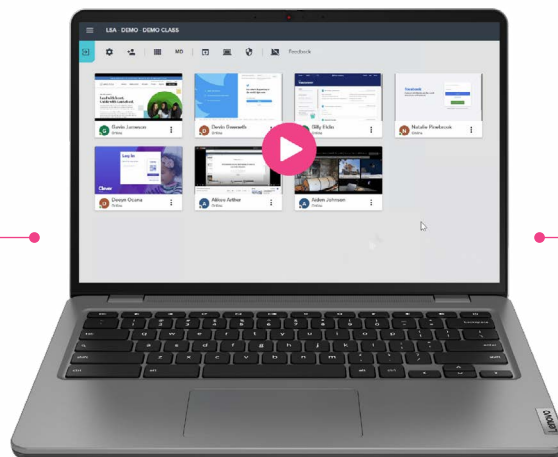
- Thumbnail and full-screen monitoring
- Blank screen
- Limit web browsing
- Integrated online safety features
- Reporting to ensure compliance

Maximize teaching time and easily capture work with features like:

- Push website
- Snapshot students' screens
- Battery status

Google Classroom and Clever integrations

- Easy onboarding and provisioning of new users
- Provisioned via the cloud or locally



Promote collaboration with powerful one-to-one and one-to-many features like:

- Messaging
- Raise Hand
- Screen Sharing



LanSchool gives our teachers the tools to turn a potential distraction into an important one-on-one teaching opportunity. It has transformed how we use digital devices in all of our classrooms.

Chris Parker, Technology Coordinator

Technical requirements:

- Implemented through cloud-based or local hosting
- Cross-platform support for Windows, Mac OS, Chrome OS, iOS, and Android operating systems

Manage apps at scale

Discover Chromebook creativity apps that were designed with learning in mind and are easy to both use and manage. Seamlessly provision and manage education-ready app licenses through the Google Admin Console.

Video editing from WeVideo

- Inspire meaningful, deeper learning
- Easy-to-use cloud-based video creation tool
- Collaboration features

Free trial >

Multimedia books from Book Creator

- Combine text, images, audio, and video to create books, journals, comics, reports, and more
- Collaborate and publish features

Free trial >



Interactive whiteboard from Explain Everything

- Share ideas as an interactive project or video
- Add drawings, images, videos, and documents
- Team collaboration through browser

Digital note-taking from Squid*

- Take digital handwritten notes
- Markup PDFs, sign documents
- Organize notes into notebooks
- Share and casting options

Graphic design from Infinite Painter*

A professional vector graphics app with unparalleled toolset:

- 200 natural brushes
- Filters and other tools for photo editing
- Realistic blending and masking

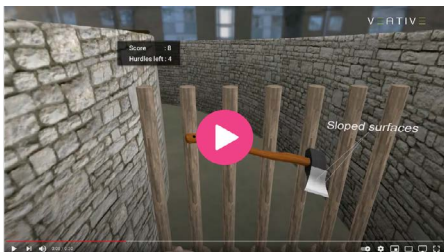
*requires stylus or Lenovo's Pencil Touch technology ([Learn more](#))

Administrators can install apps, activate app licenses, and track app usage throughout the school year — all from the Google Admin Console. With the Chrome

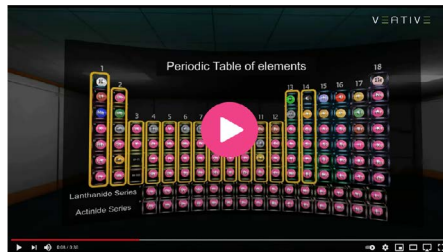
Education Upgrade, managing a fleet of devices and apps is simple and seamless.

Connecting students with concepts in virtual reality or WebXR*

Veative is transforming the way virtual reality is used in education by combining powerful VR technology with research-based instructional practices, paired with analytics to track student progress. Also available in WebXR* on any device.



Physics without intimidation



Chemistry without lab hazards



550+ interactive STEM modules

World's largest library of VR lessons

- Built to increase focus and knowledge retention
- All modules are standards-aligned
- 40 modules pre-loaded on Lenovo VR Classroom 2 headsets

Flexible deployment

- WebXR* modules enable VR classes on computers
- Built for deployment on Lenovo's VR Classroom 2 ([Learn more](#)) solution as well

Robust reporting and analytics

Inform teaching decisions with key learning metrics to provide a holistic view of a student's mastery

▶ Watch the video

▶ Watch the video

*Veative WebXR modules can be used on PCs, Macs, and Chromebooks with just a keyboard, mouse, or trackpad, and an up-to-date web browser.

Technical requirements:

- For the best experience, Chrome version 79 or higher is recommended.
- Veative WebXR modules are not supported on Android or iOS mobile devices or tablets.





03

Services & Solution



Accidental Damage Protection

Protected against the unexpected



Asset Recovery Services

Maximise value, minimise environmental impact



CO2 Offset Services

Sustainability made simple



Configuration Solutions

Reduce operational costs and help students and educators get productive, fast.



Premier Support

All your questions answered — from basic how-tos to advanced troubleshooting



Premium Care

Get the best from your new device



Accidental Damage Protection

Protected against the unexpected

Classrooms are hectic environments. Kids aren't known for having 'soft hands'. Unfortunately, standard warranties don't cover accidental damage. With Accidental Damage Protection you can protect against the unexpected.



Save money

- You can save as much as 75% on repairs.
- If repair isn't possible, your devices are replaced free of charge.



Save time

- A global network of depot repair centres makes your live easier, and you'll have the option to choose an on-site repair.
- Upgrade to Expedited Depot Warranty Service to ensure an even faster turnaround.
- Lenovo technicians take care of everything, so you never have to purchase, store or manage spare parts.



Rest easy

- With Lenovo-trained technicians using Lenovo-qualified parts, you know there'll be no surprises from poor quality parts in the future.
- Our diagnostic tools reveal hidden damage and so you avoid more repairs down the line.



28%

Average amount saved on the cost of non-warranted repair or replacement

75%

Average amount saved of on the cost of non-warranted repair or replacement of tablets

\$450

Sample cost on display repairs without Accidental Damage Protection

\$250

Sample cost on minor tablet repairs without Accidental Damage Protection

Damages covered:

Drops, spills, bumps, electrical surges – even screen damage – are all covered.



Asset Recovery Services

Maximise value, minimise environmental impact

Schools and colleges are legally responsible for safeguarding data - you are tasked with protecting the private information of students and faculty. At the same time, many organisations are working toward sustainability goals. With Asset Recovery Services, you can lessen your environmental impact, protect sensitive data, and even provide a return on tech investment.



Be compliant

- We'll help you will be on the right side of privacy laws and regulations such as HIPPA, GDPR, CCPA, Sarbanes Oxley, and Gramm-Leach-Bliley.
- Because we document the secure disposal of IT assets and data, you'll know that all your bases are covered.
- On-site data sanitisation and destruction (like wiping and shredding hard drives), means you can rest easy knowing that private data won't be leaked.



Generate income

- Recover the value of lucrative materials from obsolete devices.
- Where devices are still viable, we'll test them, prepare them for resale and securely transport them from your location.



Manage your assets sustainably

- We assess and place a value on your inventory of devices, so you know where you stand as you make space for new technologies like AR and VR.
- We help you create a sustainable hardware-disposal strategy that includes refurbishment, re-marketing, recycling and donation.
- We properly dispose of your obsolete equipment.



50 million tons

The amount of e-waste produced each year, enough to cover an area the size of Berlin.

\$57 billion

The value of high-value recoverable materials, such as gold that are currently being lost to landfill and incinerators.

We dispose of:

Keyboards, mice, cables, desktops, enterprise hardware, servers, storage arrays, switches, ups's, notebooks lcd/crt monitors, pda's (handheld PCs), mobile phones, and printers



CO2 Offset Services

Sustainability made simple

Your students and their parents care about their carbon footprint, and about yours. But it can be hard to justify the initial administrative investment of becoming more sustainable. Calculating emissions and choosing offset projects are time consuming. With CO2 Offset Services, sustainability is made simple.



Earn trust

- We'll help you keep track of your organisation's efforts with a certificate confirming the amount of CO2 offset with each Lenovo product you purchase.
- You can choose from a variety of projects, vetted and approved by the United Nations, including windmills, solar cells and biomass. So you know you're associating with tried and tested projects.



Be effective

- We calculate the value of carbon emissions for all Lenovo Think devices over five years. You can offset the carbon cost for every hardware transaction at the point of purchase.
- Keep track of your efforts since you'll receive new hardware with Carbon Offset sticker and CO2 offset certificate.



Be green from the start

- Lenovo is a leader in sustainable packaging, using bio-based material to reduce the plastic and carbon footprint of new devices. These materials are light too, which reduces CO2 emissions during shipping.
- Carbon offsetting couldn't be easier. Simply select the option at point of purchase.



26%

The percentage of organisations that have seen their share price outperform the MSCI world index after being recognised as positively affecting climate change.

Process at-a-glance:

1. Select your technology
2. Click for carbon offset
3. Choose your project
4. Confirm your purchase



Configuration Solutions

Reduce operational costs and help students and educators get productive, fast.

Every new device has to be configured to suit the precise needs of the user – a labour-intensive task that demands technical skill. Our configuration solutions ease the burden on your IT team, reduce operational costs and allow users to start using their device quicker.



Ready-to-provision

Clean Load Solutions Easily Customized

A platform of solutions including MS Autopilot that enable a consistent experience for all users.



Custom Image Services

Unique, Automated Image Management

Define your organisation's unique needs and create a custom image that works flawlessly in your environment.



Custom Bios

Settings tailored to company specs

Save your IT team time by letting Lenovo tailor BIOS settings, like admin passwords and boot-order, to match your exact needs. .



Cloud Recovery and Image Management

Quarterly Management and Updating of Custom Images

Quarterly updates including OS hotfix installations, installed app updates, non-scripted OS or app customisations, driver set additions and refreshes.¹



Asset Tagging

Identify, Track and Secure Devices

Protect your PCs from day one and deploy devices faster. Information- rich, tamper-resistant asset tags streamline inventory management and deter theft.



Drop In The Box

Custom Documentation for Device Users

Reduce IT support calls and communicate with end-users who receive a new device. Drop in the Box documentation is inserted into the shipping box before the product leaves Lenovo.



7.5

Total work hours saved, per device, using Lenovo Configuration Solutions.

¹Please check availability with Lenovo representative.



Premium Care

Get the best from your new device

Whether you're a complete beginner or a tech whiz, computers can be confusing. With Premium Care, there's always someone to turn to when times get tough. Rely on our experts to translate the tech talk and fix the faults – so you can make the most of your device.



Save time

- Enjoy service that's fast and first-class. Our highly trained technicians provide real-time solutions the moment you get in touch.
- For quick repair, our team will schedule a next-day onsite visit. Get your device up and running again as soon as possible.



Save money

- We offer annual PC Health Checks, free of charge. Our experts spot hidden issues, so you avoid expensive repairs in the future.



Save stress

- Premier Support tags help with identifying a device immediately in the event of loss or theft, so the user can get back to learning fast.
- With Lenovo's Technical Account Managers team proactively looking for any problems that may arise in the future, you can steer clear of unexpected issues.



Premier Support

All your questions answered — from basic how-tos to advanced troubleshooting

If you want learners and educators to have the best possible hybrid-learning environment, you'll need the best possible IT support. Premier Support means you'll get front-of-the-queue and straight-to-the-experts customer support service.



Relieve the burden on IT teams

- With expert phone support for end users from experienced Lenovo technicians, your IT team can focus their attention on more strategic activities.
- It's not just hardware we help with. Our experts can offer support on popular software, device drivers and app settings.



Empowers users

- Because Premier Support tags their devices, students and teachers can scan the unique QR code to see how to get help with their device, if they run into a problem.
- Our team is a single point of contact for managing all issues from beginning to end, meaning users can easily keep track of how close the problem is to being solved.



Stop interruptions to learning

- Premier Support tags help with identifying a device immediately in the event of loss or theft, so the user can get back to learning fast.
- With Lenovo's Technical Account Managers team proactively looking for any problems that may arise in the future, you can steer clear of unexpected issues.

Educational continuity: the future path for equitable learning

EdTech innovations have paved the way to the future of education, providing a path for teachers to plan and deliver lessons that support collaboration, allow for active engagement, and create a safe and inclusive environment for all learners.

And now, as educators plan for the future, Lenovo's education software portfolio can help your schools continue to provide flexible learning environments that meet the individual learning needs of every student.



*up to 330 ml

**available on 100e Chromebook Gen 3, 300e Chromebook

Lenovo education portfolio

Lenovo devices are built for learning anywhere and everywhere.



Pencil touch technology screens

You can use a no. 2 pencil to interact directly on the 10-point multitouch screen — without marking or scratching it up! Pencil Touch is ideal for taking tests, drawing, and note taking. [Learn more](#)



Dual cameras

Our 720P self-facing and 5MP world-facing cameras enable students and teachers to create and share content, staying connected with each other in more meaningful ways.



Education-grade durability

360° rubber bumpers, pry-proof keys, reinforced glass and buttons, and impact-tested touchpads mean it can stand up to common accidents in a typical student's day.



Water resistance

Spills and splashes are bound to happen — from the chemistry lab to the kitchen table — but a little liquid is no match for our water resistant* keyboards.



Reliable connectivity

Without stable wi-fi connections digital learning out of school can be difficult. This is why we offer 4G and LTE connected devices to ensure that all students have a reliable internet connection**

2023 Lenovo. All rights reserved. Lenovo and the Lenovo logo are trademarks or registered trademarks of Lenovo. All other trademarks are the property of their respective owners.