



ThinkCentre

Lenovo ThinkCentre Family Guidebook
**Desktop PCs that empower
your changing world**



Powered by Intel vPro® with
12th Gen Intel® Core™ processors

**Smarter
technology
for all**

Lenovo

Workplaces are changing and PC needs are diversifying

More than two years of COVID restrictions have reshaped how and where we work – and where we want to work. In the return to the office, new working scenarios are emerging. Computing, like your workforce, needs to be hybrid.



73% of business end users say the ways in which they work have **fundamentally changed since the COVID pandemic.**



Globally only **16%** of companies operate fully remotely. **44%** don't allow remote working¹.



83% of businesses have **reconfigured office space** for hybrid working.

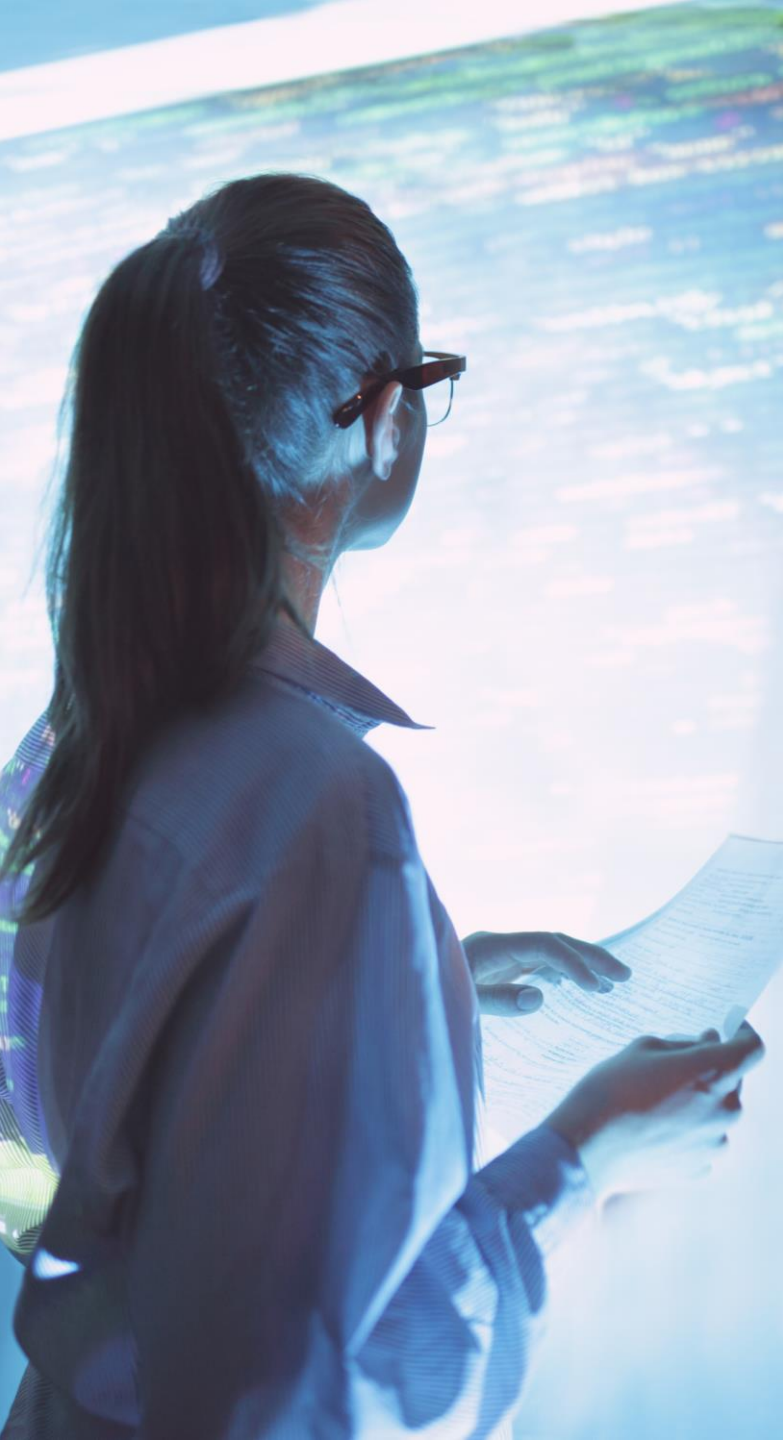


89% of ITDMs have **made changes to their IT strategy** due to COVID and **86%** have had to make **investments** to do so.



During the COVID pandemic **ITDMs** are more than twice as likely to buy **laptops over desktops.**

¹ <https://findstack.com/remote-work-statistics/>



Today's employees are digital natives and want smarter tech

By 2025 64% of the global working population will be composed of millennials (born 1981 – 1996) and GenZ (born 1997 – 2009)^{2,3}. They are also the same age groups companies are struggling to retain post-pandemic⁴. Born with technology in their hands these groups want consumer grade technology experiences at work⁵.



73% of ITDMs report that employees have higher expectations of company IT equipment than they did in the past⁶



90% employees say that their IT has a direct impact on their overall employee experience at work as well as their productivity⁶



9 in 10 ITDMs believe the IT equipment they offer staff impacts employee retention⁶

² <https://www.weforum.org/agenda/2021/03/gen-z-unemployment-chart-global-comparisons/>

³ <https://www.linkedin.com/pulse/millennials-75-workforce-2025-ever-anita-lettink/>

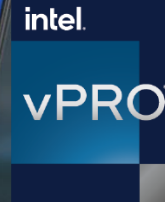
⁴ <https://hbr.org/2021/09/who-is-driving-the-great-resignation>

⁵ 2019 Forrester Lenovo SMB Survey

⁶ Lenovo ThinkCentre 2022 Changing Workplace Survey



ThinkCentre



Powered by Intel vPro®
platform

Getting the right tool for the job

PC devices need to be matched to job roles. A one-size-fits-all approach does not work. Modern businesses need to offer employees a combination of desktops and laptops.

77% of ITDMs agree the PC set up should be linked to roles and needs.

Desktops are the right choice when large monitors, computing power and speed are critical.⁶

+50% of ITDMs believe that desktops allow employees to get work done more smoothly

Giving end users the right tool for the job enhances their experience, increases productivity and helps talent acquisition and retention.⁶

Lenovo

Desktops are the smarter investment choice

Desktops can make a smarter investment choice with affordable initial purchase, less expensive maintenance and availability of replacement parts. But the advantages of desktops go way beyond costs.



ThinkCentre



Powerful Performance Anyone working with high-quality graphics or processing massive datasets can achieve better productivity with Lenovo Desktops featuring Intel vPro® with 12th Gen Intel® Core™ processors.



Collaboration Desktop offers a seamless experience with a multitude of connectivity options - USB ports, VGA/ HDMI/DP to stay connected to other devices.



Highly Configurable With desktops, it is easy to upgrade and add more storage, RAM, better graphics cards for additional performance needs.



Modern Looks, Compact Design and better ergonomics Desktops are no longer just a big black box. They now include compact and miniaturized form factors all featuring sleek design and modern build materials. A bigger screen, adjustable mountings and a full sized keyboard minimize physical stress for users working long hours.



Durability & Reliability Desktops generally have a longer lifespan thanks to their hardware advantages which have gone through rigorous testing for reliability and durability.

Lenovo ThinkCentre desktops are designed to empower your changing world

The Lenovo ThinkCentre family of desktops powered by Intel vPro® with 12th Gen Intel® Core™ processors are designed to help users increase their productivity and get work done. Smarter technology and built-in intelligence gives you more flexibility in the way you work.



The ThinkCentre brand is guided by three tenets, each balanced against the others so there's no compromise:

Purposeful design

Informed by listening to customers, watching how they work and designing solutions for specific use cases.

Relentless innovation

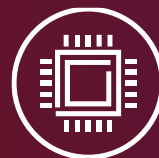
To stay ahead of customer needs to enhance productivity without compromising design or quality.

Trusted Quality

ThinkCentre employs high quality components, rigorous testing and continuous improvements to ensure our solutions are built to last and perform in tough environments.



The Lenovo ThinkCentre Family



Intel vPro® for uncompromised computing power



Industry-leading security



Customizable solution



Sustainable manufacturing & computing



Sleek & stylish workspace



Industry-leading viability and durability



Ease of use & use comfort



Lenovo Service

Lenovo

Discover the Perfect Desktop for You

Powered by Intel vPro® platform for exceptional performance and productivity



Tower

- High processing power
- Custom expandability
- Remote, modern manageability
- Versatile connectivity
- Energy efficient
- Lenovo ThinkShield



Small Form Factor

- Dependable performance and speed
- Easy upgradability
- Remote, modern manageability
- Versatile connectivity
- Energy efficient
- Lenovo ThinkShield



Tiny

- Enterprise-level performance
- Easy to manage
- Configurable
- Durable & compact
- Versatile connectivity
- Lenovo ThinkShield



All-in-One

- High performance
- Premium, sleek design
- Stunning FHD display
- Space-saving
- Energy efficient
- Lenovo ThinkShield



Tiny-in-One

- Flexible modularity and simplicity
- Exceptional user experience
- Clean aesthetics
- Space-saving
- Versatile connectivity
- Lenovo ThinkShield

Innovative form factors and sleek design for any office space and any computing needs.



M90t



M80t



M70t



M90S



M80s



M70s



M90q



M80q



M70q



M60q



Neo 70t



Neo 50t



Neo 50s



Neo 30a



Neo 50a



M70a



M90a



M90a Pro



T10 Flex

ThinkCentre



Powered by Intel vPro® platform

Lenovo

ThinkCentre Family List Price Positioning

ThinkCentre

Traditional desktop

All-in-One

Tiny-in-One

\$900+



M90a Pro Gen 3
23.8"

\$900



M90a Gen 3
23.8"

\$800



M90t/s/q Gen 3
17/8.2/1L



Neo 70t Gen 3
17L



Neo 50a Gen 3
23.8"



TIO 27
27"

\$700



M80t/s/q Gen 3
13.6/8.2/1L



M70a Gen 3
21.5"



TIO 24/22 Gen 4
23.8"/21.5"



Neo 30a Gen 3
27"

\$600



M70t/s/q Gen 3
M75t/s/q Gen 2
13.6/8.2/1L



Neo 30a Gen 3
23.8"/21.5"



TIO Flex
27"/23.8"/21.5"

\$500



Neo 50t/s Gen 3
13.6L/ 7.4L

\$400



Powered by Intel vPro®
with 12th Gen Intel®
Core™ processors

<\$400



M60q Chromebox
M60q Chromebox
Enterprise
1L

*The price is starting price, which is various by configuration.

Lenovo

ThinkCentre M Series Portfolio



Powered by Intel vPro® platform



Towers

17L/13.6L

Business-class desktops with remote, modern manageability and high-end performance with custom expandability.



Small Form Factor

8.2L/7.4L



Tiny

1L

1L powerhouse desktop with practical expandability and high-energy efficiency.



All-in-One

22"/24"/27"

Customizable, space-saving solution to boost performance and productivity.



Tiny-in-One

TIO Flex 22i/24i/24v/27i
TIO Gen 4 22"/24"
TIO 27"

Flexible, expandable solution for modular environments.

ThinkCentre

Lenovo

ThinkCentre neo portfolio



Powered by Intel vPro®
with 12th Gen Intel®
Core™ processors



Tower

70t
ADL-S | 17L

Highly responsive performance to take on complex digital workloads



50t
ADL-S | 13.6L

Engineered for productivity combining low noise and energy efficiency



Small Form Factor

50s
ADL-S | 7.4L

Optimized workspace with adaptive power management and space savings



All-in-One

30a
ADL-P28 | 27"/23.8"/21.5"

Enhanced collaboration with intuitive AI-based online meeting experience



50a
ADL-H45 | 23.8"

High performance, immersive visual and intuitive experience with AI chip camera

ThinkCentre^{NEO}

Lenovo

ThinkCentre neo and ThinkCentre M

Different value propositions for specific needs



Powered by Intel vPro® with 12th Gen Intel® Core™ processors

ThinkCentre neo series

ThinkCentre M series

| | | |
|--------------------------|-------------------------------------------------------------------------------------------------------------------------------------------------------------------------------------------------------------------------------------------------------------------------------------------------------------------------------------------------------------------------------------------------------------|------------------------------------------------------------------------------------------------------------------------------------------------------------------------------------------------------------------------------------------------------------------------------------------------------------------------------------------|
| Value Proposition | <ul style="list-style-type: none"> • Mainstream productivity, value focused • Contemporary, stylish, sustainable design • Intuitive features for smarter performance • Enhanced all-round collaboration • Intel® vPro® Essentials level manageability* | <ul style="list-style-type: none"> • Enterprise class, high-end performance, best of expandability • Classic, commercial design • Unrivaled premium performance and expandability • Enterprise-grade security & MIL-spec durability • Intel® vPro® Enterprise level manageability |
| Target Users | <ul style="list-style-type: none"> • New Workplace Professionals, Content Creators and Ecopreneurs who desire utmost productivity, collaboration in an eco-friendly design, with business level performance & security | <ul style="list-style-type: none"> • Customers who need highly reliable devices with uncompromised security, top-notch performance and advanced manageability and best expandability |
| Target Segment | <ul style="list-style-type: none"> • SMB customers who look for diverse business work scenarios | <ul style="list-style-type: none"> • Enterprise customers who require manageability, advanced security and reliability |
| Key Differences | <ul style="list-style-type: none"> • Stylish design in terrazzo material with speckled resin CMF • First to Market with 12th Gen Intel® Core™ i9 Processor • Smart Cable & Smart Storage² for easy device collaboration and secure data storage • Better green appeal with OBP¹ packaging & paint-free raw material used | <ul style="list-style-type: none"> • Classic design • Intel® Core™ vPro™ processors • Full-featured security • Rock-solid reliability |

*Intel® vPro® Essentials is available on ThinkCentre neo 70t only
¹OBP – Ocean Bound Plastic used in packaging
² Specs may vary by models



Range of configurations



Powered by Intel vPro®
with 12th Gen Intel®
Core™ processors

ThinkCentre neo series

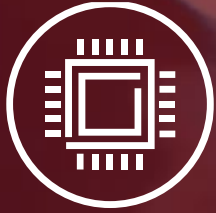
| | |
|---------------------|---------------------------------------------------------------------------------------------------------------------------------------|
| Platform | Intel® Q670, B660 |
| Form Factor | Small Form Factor, Tower, All-in-One |
| Processor | 12 th Gen Intel® Core™ i9, i7, i5, i3 |
| OS | Windows 11 Pro, Windows 11 Home, Windows 10 Pro (Windows 11 pro DG) |
| Memory | Up to 128GB DDR5 (4400 MHz) memory |
| Storage | Up to 1TB SSD and up to 2TB HDD storage |
| Graphics | NVIDIA® GeForce® RTX3060Ti, RTX3060, GTX1660SP Intel® Iris XE Max 100, Intel® XE Arc A380 Graphics, AMD Radeon RX 6500XT |
| Ease of Use | ICE 5.0 (Intelligent Cooling Engine), SSD bracket, Memory cover, 2.5" HDD bracket, Monitor stand, Full-function stand, Smart Power On |
| Connectivity | WiFi 6E, WiFi 6, WiFi 5 |
| Security | dTPM 2.0 |

ThinkCentre M series

| | |
|---------------------|-------------------------------------------------------------------------------------------------------------------------------------------------------------------------------------------------------------------|
| Platform | Intel vPro® Enterprise & Essential / Intel Q670 |
| Form Factor | Tiny, Small Form Factor, Tower, All-in-One, Tiny-in-One |
| Processor | 12 th Gen Intel® Core™ i9, i7, i5, i3 |
| OS | Windows 11 (Pro & Home); Windows 11 Downgrade (Pro); Windows 10 IoT |
| Memory | Up to 128GB DDR5 UDIMM (up to 4400MHz) memory |
| Storage | Up to 1TB SSD and up to 2TB HDD storage |
| Graphics | Intel® UHD Graphics 770 / 730 / 710; Intel® XE Max 100; AMD Radeon™ RX 6400; NVIDIA® GeForce® GTX1660 Super; NVIDIA® GeForce® RTX3050; NVIDIA® GeForce® RTX3060; NVIDIA® GeForce® RTX3070Ti, AMD Radeon RX 6500XT |
| Ease of Use | ICE 5.0 (Intelligent Cooling Engine), SSD bracket, Memory cover, 2.5" HDD bracket, Full-function stand, Ultra-flex stand, Smart Power On |
| Connectivity | WiFi 6E, WiFi 6, WiFi 5 |
| Security | Security dTPM 2.0, Intel vPro® Enterprise; Level 2 Self-healing BIOS |

Note: Configurations vary by models



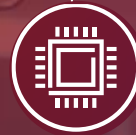


Uncompromised computing power

Performance is the key to productivity. A powerful setup allows you to spend less time waiting and more time working. ThinkCentre delivers more computing power, faster processors, and a larger screen to enhance performance and allows you to make better use of your time.

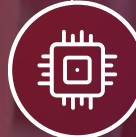


Powered by Intel vPro® platform



Intel® vPro® Platform:

Intel vPro® with 12th Gen Intel® Core™ processors feature revolutionary architecture that intelligently allocates workloads to the right thread on the right core based on real-time analysis, providing optimized business performance every day.



ICE 5.0:

ThinkCentre's Intelligent Cooling Engine (ICE) 5.0 delivers optimal performance by controlling internal temperatures and power consumption. Also, it has various modes for different workplaces to fit your needs.



Choice of form factors:

The ThinkCentre family includes a range of compact form factors that don't compromise computing power all offering large screens and full-sized keyboards to enhance productivity.



Human Presence Detective (HPD) Radar Sensor:

AI-powered human presence detection allows zero-touch login for ease of use and multi-user flexibility, and can intelligently dim the display when the user looks away lowering power usage.



Ready to go experiences:

To boost productivity waiting times are minimized with features including Smart Power On, Quick Boot and Modern Standby that take devices from sleep to go in the shortest possible time.



Customizable solutions to meet every need

ThinkCentre desktops and all-in-ones are uniquely extensible and configurable to perfectly match job function and accommodate personal preferences. A multitude of USB ports and modular design enables expandable connectivity and also allows employees to keep their favorite monitors and keyboards in use.



Powered by Intel vPro® platform



Flex I/O:

Connections between ThinkCentre and other hardware is simple and intuitive, allowing you to react to your business needs swiftly. Ample I/O ports and extensibility helps to meet the complex IT needs of today's businesses



Lenovo ThinkCentre TIOs:

ThinkCentre TIO is not only compatible with the ThinkCentre Tiny and ThinkStation Tiny, but can also be upgraded independently, providing you the extra power you need to handle demanding tasks.



Smart Cable

When you've been working on the road and return to the office, transferring data from laptop to desktop is faster and more secure with ThinkCentre's smart cable which allows you to seamlessly connect devices.



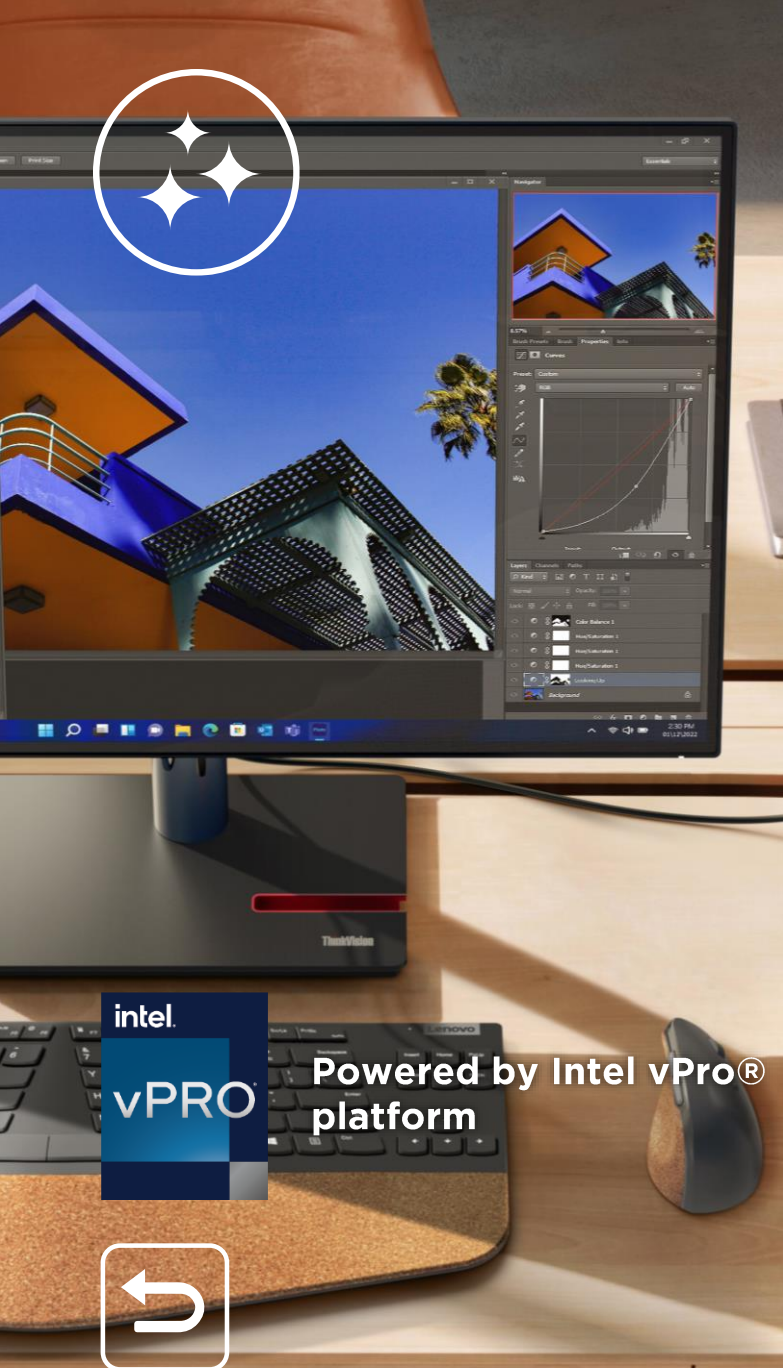
Power Boost

Smart cable also helps handle heavy duty tasks that require more power than just one desktop on its own by pairing devices to work together and managing both using a single keyboard, mouse and monitor.



Smooth Conference Calls

Users expect and demand smooth and efficient conference calls to communicate with clarity. With the collaboration with ThinkCentre's Smart Voice, con-call base and Lenovo View: Smart Appearance, users can communicate with their colleagues anytime through smooth and clear conference calls.



Creating sleek and stylish workspaces

Forget outsized bulky boxes. ThinkCentre's compact, sleek designs and modern build materials provide a contemporary look for your workspace.



Modest size: Say no more to oversized towers under a desk. The modest size of ThinkCentre smart desktops, AIO, and TIO solutions maximize available desktop space and minimize visual clutter.



Smart cable management: Cables affect the look of a workspace and they can be difficult to manage. ThinkCentre's smart cable management hides unsightly cords. Integrated phone and keyboard garages minimize clutter.



Sleek design and modern build materials: A desktop should compliment the décor of a workspace. The sleek designs and modern build materials applied across the ThinkCentre family provides an enhanced visual effect that makes a statement and adds impact.



Mounting and bracket: Simplicity is the hallmark of good design and ThinkCentre's mounting and bracket helps deliver a minimalist look and feel.



Ergonomic design for the most comfortable working experience

Working long hours in an incorrect position may cause muscle injuries or lower back pain. ThinkCentre desktops provide an ergonomic display and keyboard setup which promotes a healthy typing position.



Flexible, adjustable mountings adapt to any sitting or standing position

ThinkCentre's full function stand and ultra flex stand of M AIO allow users to find their optimal position for long-hour working, whether it is standing or sitting, users can simply adjust the mountings with no tools needed.



Large screens certified with eye-care certifications

ThinkCentre screens have obtained various certifications including TÜV Rheinland Eye Comfort, TÜV Rheinland Low Blue Light, TÜV Rheinland Flicker Free, TÜV Low Blue Light, TÜV Ultra Low Noise and Eyesafe Display Certification.



Wireless full-sized keyboards to boost your productivity

To provide a comfortable and healthy typing position throughout the day, ThinkCentre users can connect their desktops to wireless full-sized keyboards according to their preference. The smart power on feature also allows users to turn on the desktop with just the keyboard.

intel

vPRO

Powered by Intel vPro® platform



Lenovo



Lenovo and Intel are working together to optimize business PCs for the modern workforce.

Windows 11 Pro for Business



Powered by the latest Intel® processors for an unrivalled business PC solution



Lenovo

Think

Think hardware engineering
ThinkShield security
Lenovo Endpoint Management
Lenovo Modern IT Services



Built for modern business with security by design



Lenovo



Protect your data with built in security

Increasing cybersecurity threats and a distributed workforce makes security a priority and a challenge. ThinkCentre comes with built-in, automatic security features that protect user data effortlessly without interrupting workflow.



Powered by Intel vPro® platform



ThinkCentre desktops and all-in-ones are protected by **ThinkShield** and powered by the Intel vPro® platform. This comprehensive, end-to-end security platform helps secure critical corporate data wherever employees are working.



Smart USB Protection keeps employees' ThinkCentre desktops safer from rogue USB storage devices and data leakage. IT professionals can configure USB ports to respond only to keyboards and pointing devices.



Sensitive data on a drive can be deleted without external tools or removing the drive through **Secure Wipe 2.0**. IT admins can also run log reports to confirm the SSD or HDD has been wiped.



By deeply integrating hardware, firmware and the Windows operating system, **Secured-core PCs** are constantly protected against threats.



Self-healing BIOS intelligently restore the system to an earlier safe state if it ever becomes corrupted, giving employees a safety net.



Intel vPro® and 12th Gen Intel® Core™ processors, along with **exclusive Intel® Hardware Shield**, include hardware-based, multilayer security that helps reduce the attack surface of a PC and assists in active monitoring against attacks without bogging down productivity due to lost performance.



Armed with the latest **Trusted Platform Module (TPM) 2.0**, ThinkCentre provides robust security for your data. Using Windows on a system equipped with TPM gives you a deeper and broader level of security coverage.



Wi-Fi 6 strengthens encryption and authentication algorithms to better protect corporate data.



IT meets ESG

Business leaders, employees and consumers now realize businesses need to be more considerate of the impact their operations have on the wellbeing of the planet. Many businesses are now setting carbon net-zero goals and need to follow through on these commitments with action plans. IT strategy and ESG strategy need to be aligned if these plans are to be realized.



E-waste: In 2021, the World Economic Forum estimated that total 57.4 million tons of electronic waste (e-waste) was discarded globally. ⁷



ESG strategy: 8 in 10 ITDMs in companies with a current / developing ESG strategy agree that IT purchases will be a key consideration of it.



Energy efficient: Over 50% of the end users see efficiency and protecting the environment as key concerns.

Data source: Lenovo ThinkCentre 2022 Changing Workplaces Survey

⁷ <https://www.weforum.org/agenda/2021/10/2021-years-e-waste-outweigh-great-wall-of-china/#:~:text=In%202021%2C%20human%20beings%20will,the%20world's%20heaviest%20human%20construction>





Sustainable businesses need more sustainable computing

ThinkCentre desktops and all-in-ones are designed with sustainability in mind to help you hit your ESG targets while lowering the cost of investment.



Manufacturing

- 100% of ThinkCentre models released after 2019 contain closed-loop post-consumer recycled plastic
- 90% of plastic packaging by weight for Lenovo PC products will be made from recycled materials by 2025
- Depending on the final application requirements, the plastic resins used for Lenovo ThinkCentre desktops contain between 1.8% and 57.8% PCC
- 100% of the Intel® Core™ vPro® processors used in Lenovo ThinkCentre products made with conflict-free minerals.



Power consumption

- Since 2018, ThinkCentre PCs have become 29% more energy efficient



Extended life span

- **Repair:** Desktops are faster and easier to repair which minimizes disruption and extends the lifespan of devices.
- **Upgrade:** Instead of replacing the entire desktop, ThinkCentre's setup can be upgraded by simply plugging a compatible ThinkCentre Tiny, Thin Client into the back of the monitor.



Powered by Intel vPro® platform





Industry-leading standard for viability and durability



Powered by Intel vPro® platform



Lenovo is dedicated to constantly improving product quality. All ThinkCentre desktops have gone through rigorous testing for reliability and durability to achieve industry-leading standard. With the solid build quality, ThinkCentre delivers a reliable and trusted business experience to users.



Vibration

Tested while running and turned off



Humidity

95% relative humidity, at 30°C-60°C



High temperature

Storage: 63°C for 24 hrs.
Operation: 43°C for 2 hrs.



Low temperature

Storage: -25°C for 24 hrs.
Operation: -21°C for 2 hrs.



Contamination by fluids

Chemicals on exposed surface
5-10min



Intel® Stable IT Platform Program

Keep hardware components consistent for 15 months from product launch



Fungus

28 days with common fungus sources



Altitude

Tested for operations at 15,000 feet



Solar radiation

Three 24-hr. cycles of simulated UV radiation



Shock

Transit dropped tested in every corner 26 times



Temperature shock

Tested in temperature shocks cycles going from -25°C to 60°C for 6hrs



Salt fog

24hrs spray+ 24hrs dry, 2cycles



Comprehensive care for your Lenovo IT assets

Lenovo offers a comprehensive portfolio of services that support the full lifecycle of your Lenovo IT assets. From initial strategic planning to customized configuration, deployment, support, protection, security, and asset recovery—Lenovo has solutions powered by Intel vPro® platform to help you embrace new workplace technologies.



Premier Support: No matter where you or your employees are located, you have direct, 24x7x365 access to elite Lenovo engineers, unscripted troubleshooting, comprehensive hardware and OEM software support, priority on service delivery, repair parts, and more.



Lenovo Device-as-a-Service (DaaS): Combine hardware, services, and software into a single, flexible solution to maintain predictable monthly costs. This innovative, fully-managed model drives down capital IT expenses while ensuring your employees experience the latest technology to keep them secure and productive.



Lenovo Warranty: Lenovo Warranty ensures ThinkCentre is protected by offering a full range of award-winning, flexible services, including depot service, onsite service, warranty extension, sealed battery service, and international warranty service.



Lenovo CO₂ Offset Services: Lenovo works with an Environmental Partner to compensate the CO₂ emissions associated with your device, and you are then able to track and confirm the offset information through the serial number of your device.

Thank You

ThinkCentre

Smarter
technology
for all

Lenovo