

ThinkEdge SE30

Tackling challenging tasks in demanding environments is what the SE30 was designed for. Powered by the latest 11th Generation Intel® Core™ i5 vPro® processors for industrial computing with high-speed DDR4 memory, the SE30 is ready-built for challenging edge applications.

When it comes to an IoT-ready platform, the SE30 is a game-changer. It supports Wi-Fi, Bluetooth® 4G LTE / and 5G WWAN wireless connections to efficiently transport your IoT data to the cloud or your data center. With a scalable IOBOX for additional connectivity, the SE30 delivers expandability features optimized for industrial environments that operate a wide variety of devices.

With an innovative fanless design that guarantees efficient heat dissipation (thermal range of -20°C to 60°C) and with MIL-STD-tested device reliability, the SE30 offers durable performance for uninterrupted productivity, even in harsh environments.



Smarter
technology
for all

Lenovo

Lenovo ThinkEdge SE30 powered by Intel vPro®



ThinkEdge SE30



BOOSTS PRODUCTIVITY

Powerful Intel® Core™ processors, up to 16GB of DDR4 memory and up to 2TB of storage, make everyday tasks faster and smoother now while also future proofing against your edge computing needs.



UNMATCHED RELIABILITY

The SE30 is MIL-SPEC tested for its 24x365 ability to withstand extreme temperatures and harsh conditions. That means it stays reliable and keeps you productive over the long haul.



COMPACT DESIGN

With an ultra-small form factor (0.81L), the SE30 packs more computing power into a smaller footprint. Easy to mount, it can be tucked behind a monitor, placed under the desk, or mounted on the wall—wherever you like it.



CONVENIENT CONNECTIVITY

The SE30 features standard dual ethernet ports and can be equipped with 4G LTE or 5G WWAN for wired and wireless connectivity. An optional IOBOX with configurable serial interfaces, two POE ports, and DI/DO connectors provides even greater connectivity for manufacturing scenarios. The SE30 also serves as a bridge, communicating with both WWAN and dual LAN devices.



IT benefits



RELIABILITY AND STABILITY

The SE30 is MIL-SPEC tested for durability, including unanticipated temperature shocks. The fanless design ensures efficient heat dissipation for improved performance.



SECURITY

The TPM 2.0 hardware cryptoprocessor chip uses RSA encryption to protect user information, while the Kensington™ lock slot offers physical security against device theft. The available Hardware Watchdog Timer can prevent disruptions to your system's operation.



FLEXIBILITY

An array of accessories allows the SE30 to be securely mounted on a wall, under a desk, or behind a monitor using VESA mounts, power cage, or DIN rails.



MANAGEABILITY

Built for evolving IoT environments, the SE30 with 11th Gen Intel® Core™ i5 vPro® processors for industrial computing has been certified for Windows 10 IoT Enterprise, Microsoft® Azure IoT Edge, RedHat®, Amazon Green Grass, and Ubuntu®, making analyzing and reporting of devices in the network effortless.

USE CASES FOR SE30

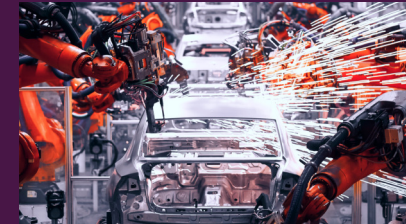
Smart Retail & Hospitality

Retailers can rely on the SE30 to power signage and capture data from multiple sources simultaneously, including sensors, traffic counters, and thermostats.



Smart Manufacturing

The SE30 helps drive manufacturing and production automation, with faster data processing from operations to IT.



Smart Healthcare

The SE30 can replace thin client devices in healthcare settings, taking up even less space while offering full connectivity and computing capabilities.



Performance

PROCESSOR

Intel® Core™ i5-1145G7E vPro®*
Intel® Core™ i5-1145GRE vPro®
Intel® Celeron™ 6305e*
Intel® Core™ i3-1115GRE

OPERATING SYSTEM

Windows 10 IoT LTSC 2019
Windows 10 IoT LTSC 2021
Ubuntu Server 22.04 (Kernel 5.15)*
Ubuntu Core 22 (Kernel 5.15)*
Ubuntu Server 20.04 (Wide Temp)
Ubuntu Core 20 (Wide Temp)

MEMORY

Up to 16GB (dual channel) DDR4

STORAGE

Up to 2TB M.2 PCIe SSD

PSU

65W AC adapter
9-36V DC via IOBOX (optional)

Connectivity

FRONT INPUT/OUTPUT PORTS

2x RS-232/422/485
2x USB3.2 Gen2
1x Type-C (USB3.2 Gen2, display)
1x audio combo

REAR INPUT/OUTPUT PORTS

1x USB3.2 Gen2
1x Type-C (Thunderbolt4, display, PD 5V3A)
1x DP 1.4a 4K 60fps (celeron) / 1x
HDMI 1.4b 4K
2 x RJ45 LAN

EXPANSION SLOT

2 x M.2 2280/2230 SSD
1 x M.2 2230 Wi-Fi/Bluetooth®
1 x M.2 3042 4G or 5G

Displays

INDEPENDENT DISPLAYS

Yes, 3 independent displays

MULTI-MONITOR

Yes, 3 x (1 x HDMI or DP, 2 x display from Type-C)

*for 11NH & 11Nk only

Security

ThinkShield Security Platform
HW TPM 2.0
Chassis intrusion switch
Kensington™ lock slot
Hardware Watchdog Timer

Reliability

MIL-SPEC 810H

Yes

Certifications

SW AND IoT CERTIFICATIONS

Ubuntu® Certified
Red Hat® Certified
Microsoft® Azure IoT Edge Certified
AWS IoT Greengrass® Certified

SAFETY

UL, CB, CCC, BSMI

EMC

CE/FCC Class B, CCC, BSMI

ENVIRONMENTAL

Operating temperature:
0°C - 50°C (32°F - 122°F) with
0.7 m/s air flow*
-20°C - 60°C (32°F - 122°F) with
0.7 m/s air flow
Storage temperature:
-40-85°C (-40-185°F)
Relative humidity:
95% at 40°C non-condensing
Vibration operation:
IEC60068-2-64, 3Grms, random,
5-500 Hz, 1 hour/axis
Shock operation:
IEC60068-2-27, 30G/11ms, half sine

External mechanical peripherals

VESA wall mount (optional)
DIN rail bracket (optional)
SE30 IOBOX (optional)

Design

DIMENSIONS

179 x 88 x 51.5mm
7.05 x 3.46 x 2.03 inches

WEIGHT

800g-1kg/1.76-2.2 lb.

Recommended services

Lenovo offers a comprehensive portfolio of services to support and protect your investments, so you can focus on the business at hand rather than worrying about IT.

PREMIER SUPPORT

Provides direct access to skilled and experienced Lenovo technicians for comprehensive hardware and software support. Gives you a consistent point of contact within Lenovo to ensure that your case resolution is professionally managed from start to finish.

ACCIDENTAL DAMAGE PROTECTION (ADP)

Prevents the hassles of unexpected repair costs. Provides coverage for non-warranted damage incurred under normal operating conditions, such as minor spills, drops, or damage.

WARRANTY EXTENSION (1-YEAR BASE, UP TO 5 YEARS TOTAL)

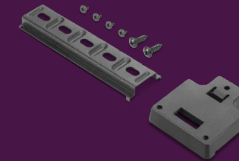
This fixed-term, fixed-cost service helps you accurately budget for PC expenses, protect your valuable investment, and lower your cost of ownership over time.

optional accessories



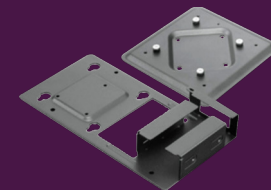
SE30 IOBOX

This accessory enables the SE30 to connect with even more types of sensors and devices. The IOBOX features DC power for industrial settings, configurable serial interfaces, two POE ports to power sensors, and DI/DO connectors, making this a valuable, yet rugged addition to your edge computing ecosystem.



SE30 DIN RAIL MOUNT

This compact and ruggedly designed mount securely affixes the SE30 to a rack housing cabinet or frame with other DIN rail equipment for a clutter-free workspace.



SE30 POWER CAGE

The power cage BKT works with VESA-compatible equipment and also with allocation of AC adapter.

© Lenovo 2023. All rights reserved.
Intel, the Intel logo, and other Intel marks are trademarks of Intel Corporation or its subsidiaries.