

# Evolve! Lead your organization from Windows 10 to Windows 11 Pro

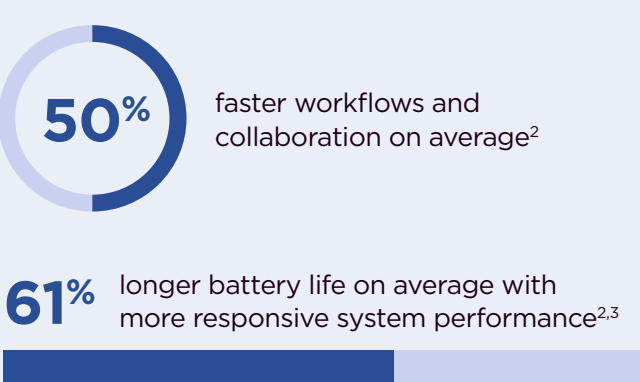


**The Windows 10 support deadline is October 14, 2025.** Upgrade now to be future-ready and get the advantages of improved user experience, new productivity enhancements, and security innovations — all backed by Copilot\* in Windows.

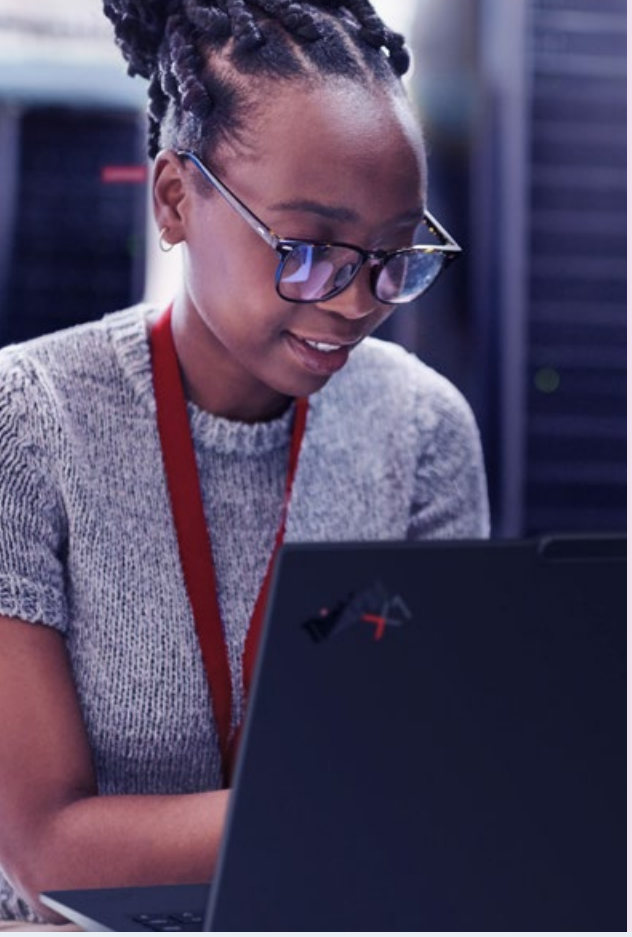
**Hover on the hotspots** to discover next-level features and hear from your peers about their migration experiences.

“Forward-looking companies know a PC refresh is critical to their continued success and recognize the value of making it happen well ahead of the planned Windows 10 EOS.”  
**IDC<sup>1</sup>**

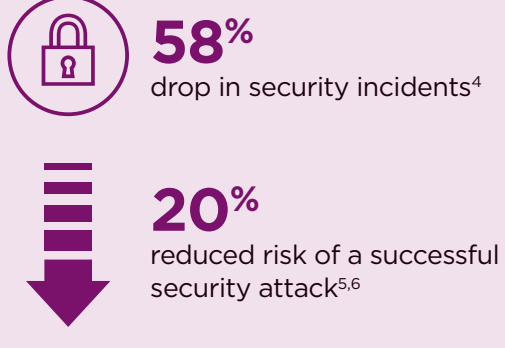
## Productivity and EX Supercharge insights and efficiency



Optimize employee experience, boost productivity, and be AI-ready with powerful performance and new features that improve organization, efficiency, accessibility, and satisfaction.

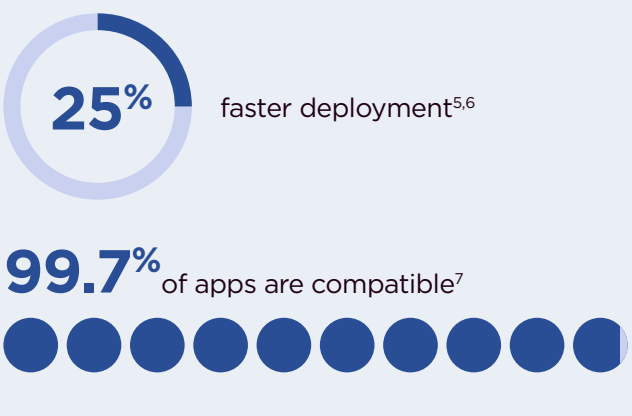


## Security Powerful protection by default



Get layers of protection across the device, OS, apps, identity, and the cloud — with integrated hardware and software, Windows 11 security features automatically turned on by default and Lenovo ThinkShield.

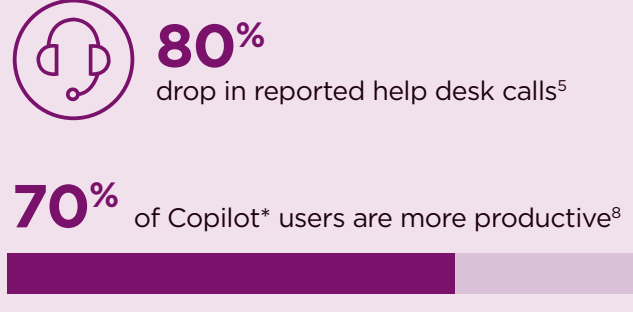
## IT management Streamline implementation and routine tasks



Save time and money with simplified deployment, easier maintenance, and a smooth transition to Windows 11 to support today's hybrid workforce more effectively.



## Future-readiness Unlock your AI advantage



Prepare for an AI-rich future with Copilot in Windows\* and systemwide intelligence for proactive protection, powerful search, enhanced videoconferencing, better accessibility, and even help with your carbon footprint.

## Three reasons to get started now:

- ✓ Ensure you are protected, supported, and future-proofed with the latest devices and OS
- ✓ Give yourself time to plan, ensure inventory availability, and manage the transition
- ✓ Eliminate the maintenance and repair costs of aging equipment

When you partner with Lenovo, we help you create the best migration strategy for your unique needs, starting with the **Lenovo Assessment Service for Windows 11 to establish the scope and scale, and ensure a smooth transition.** You also get to take advantage of TruScale Device as a Service. We're here to help **with guidance, services, and devices that optimize the power of Windows 11 now and for the future.**

## Migrating to Windows 11 is a breeze with Lenovo Assessment Service

Discover more at [techtoday.lenovo.com/windows-11](https://techtoday.lenovo.com/windows-11)

**References**  
 1 IDC, "The Refresh Imperative: The Value of Deploying New, More Secure, Generative AI-Centric PCs Ahead of the Windows 10 End of Service," 2023  
 2 Compared to Windows 10 devices. Principled Technologies, "Improve your day-to-day experience with Windows 11 Pro laptops," February 2023  
 3 Battery life varies based on settings, usage, device and other factors  
 4 Windows 11 results are in comparison with Windows 10 devices. Techaisle, "Windows 11 Survey Report," February, 2022  
 5 Commissioned study delivered by Forrester Consulting "The Total Economic Impact" of Windows 11 Pro Devices," December 2022.  
 Note, quantified benefits reflect results over three years combined into a single composite organization that generates \$1 billion in annual revenue, has 2,000 employees, refreshes hardware on a four-year cycle, and migrates the entirety of its workforce to Windows 11 devices.  
 6 Microsoft Intune and Azure Active Directory required; sold separately  
 7 App Assure program data  
 8 Work Trend Index Special Report "What can Copilot's earliest users teach us about generative AI at work?," November 2023

\* Copilot availability and rollout timing varies by market. Copilot with commercial data protection requires Microsoft 365 E3, E5, Business Standard, Business Premium, or A3 or A5 for faculty, or accessed using Microsoft Entra ID.

© Lenovo 2024. All rights reserved. v1.00 April 2024.

**Windows 11**  
Lenovo recommends Windows 11 Pro for Business

© Lenovo 2024. All rights reserved. v1.00 May 2024.

All offers subject to availability. Lenovo reserves the right to alter product offerings, prices, specifications or availability at any time without notice. Models pictured are for illustration purpose only. Lenovo is not responsible for typographic or photographic errors. Information advertised has no contractual effect. Lenovo, include other Lenovo marks referenced - ThinkPad, ThinkCentre, ThinkStation, ThinkVantage, and ThinkVision are trademarks of Lenovo. Microsoft, Windows and Vista are registered trademarks of Microsoft Corporation. All other trademarks are the property of their respective owners.

**Smarter technology for all**