



Lenovo
ThinkCentre

ThinkCentre AIO Family Guidebook
The best solutions come All-in-One.
ThinkCentre – the smart choice



Built for Business

Smarter
technology
for all

Lenovo

Welcome to a hybrid, multi-device world

Working across home, the office and places in between, employees now use more than one device to get their work done. Smartphones and laptops have the edge on mobility, but desktops win in power and performance. There's no one-size-fits-all approach to hybrid working scenarios and employees know it.

As the workplace evolves it's critical that IT evolves with it providing devices that work together to best support hybrid teams and keep your business moving forward.¹



Employees use an average of **2.5 devices** for work including PCs, smartphones, tablets and wearables.³



Truly effective hybrid work models design across onsite and remote working environments.² **70% of business end users would like to be provided with both desktops and laptops to allow them to be more productive while hybrid working.**⁴



'The office' now has an extended meaning covering both the conventional office and the home office. **Around 70% of employees prefer some split between the two.**²

¹ EY Parthenon Jan 2023. 2023 Global Economic Outlook
² Lenovo 2021. The Future of Work and Digital Transformation
³ BYOD Statistics 2022 Zippia.com
⁴ Lenovo ThinkCentre 2022 Changing Workplace Survey

The best solutions come All-In-One

Lenovo
ThinkCentre



Simplicity is the key to great design.

Powerful, stylish, compact: an all-in-one desktop form factor gives employees the smart working experience they're looking for.

Developed for modern working, the Lenovo ThinkCentre All-in-One family of desktops truly deliver.



Powered by Intel vPro® for an unrivaled business PC solution



Incredible productivity



New standards for multi-device collaboration for hybrid working



Exceptional display visualization



360° security

All with the assurance of reliability of the ThinkCentre brand.

Lenovo

Introducing the ThinkCentre M90a Pro Gen4 – the must-have PC for the modern workforce

A category leader.
ThinkCentre's most premium all-in-one desktop

It's the definitive choice for hybrid working designed to be a connectivity hub between devices and providing the premium performance, visualization, security and reliability you want in a desktop.



Powered by Intel vPro® for an unrivaled business PC solution

Lenovo
ThinkCentre



Lenovo



ThinkCentre M90a Pro Gen4 Intuitively built to support modern working

The ThinkCentre M90a Pro Gen4 is built with collaboration in mind. Get ready to lean into collaboration of every kind: across devices as well with your coworkers.



Premium
Performance



Exceptional
Visualization



Built-in
Security



Modern User
Experience



Stylish
Design

Lenovo

ThinkCentre M90a Pro Gen4

Raising the bar on AIO desktop PCs



Premium Performance, Plus Productivity

Make better use of your time with faster processors for extra firepower.

- Intel vPro® with up to 13th Gen Intel® Core™ i9 processor
- Optional NVIDIA RTX4050 dGPU, 85W, 6GB gDDR6
- Super high speed data transfer via Thunderbolt 4
- Up to 64GB DDR5
- 2 x M.2 SSD, 1 x 2.5" HDD (optional)
- 230W internal PSU



Built-in Security

End-to-end security features allow for safe, worry-free working without compromising productivity.

- Human Presence Detector Gen 2 w/ Radar sensor
- EC Self-healing (Level 2)
- BIOS-based Smart USB Protection
- Intel® Context Sensing Technology
- Intel® Hardware Shield multilayer security
- dTPM 2.0



Exceptional Visualization

Dial up visualization to the max. Enjoy extra comfort and immersive experiences with our largest, color calibrated 27" QHD display

- Color calibration (Delta E <2)
- Natural low blue light technology certified with TÜV Rheinland Eyesafe and TÜV Rheinland Flicker Free.



Modern User Experience

Zero-friction connectivity lets different devices including desktop PC, laptop and smartphone and peripherals work in sync, keeping ideas flowing seamlessly.

- Display sharing and M.2 SSD sharing with your laptop via Thunderbolt 3
- Picking up calls, Text sharing, Drag and drop files with your smart phone
- Seamless VOIP experience
- Energy Performance Optimizer



Stylish Design

Sleek design and modern build materials compliment the most stylish home or office.



ThinkCentre M90a Pro Gen4 Race to the top with industry- leading performance

Premium processing, maximum performance

From big data processing to 3D visualization and AI applications, systems today have some heavy lifting to do. The M90a Pro Gen4 sets bold new standards in processing power and speeds. Multi-tasking? Data-heavy projects? Lots of multimedia? Breeze through all types of work with ease.

Industry-leading CPU performance

13th Gen Intel® Core™ i9 processor and RPL-S 65W, Intel® Dynamic Tuning Optimization¹¹ gives users what they need to take care of business with improved Performance-cores designed to handle the most demanding business workloads.

Industry-leading GPU for content creation and parallel processing

RTX4050~85W dGPU, 6GB gDDR6 provides powerful image processing and parallel processing performance to accelerate the handling of workloads and applications.

High speed data transfer

Intel® Thunderbolt™ 4 port helps support multi-device working models.



The ThinkCentre M90a Pro Gen4 Setting new standards in multi-device collaboration

Thunderbolt
3 & 4 ports

AIO

Think2Think
wireless pairing

Hybrid working isn't just about *where* work is getting done. It is about *how* work is getting done.

Employees are working across multiple devices, adapting to new use cases all the time. When those devices work seamlessly together, business works better.



Your new connectivity hub

The Lenovo Think2Think solution links PCs to laptops and Lenovo ThinkPhones, turning the ThinkCentre M90a Pro Gen4 into a connectivity hub with:

- Intuitive **wireless device pairing**
- **Unified clipboard** across devices for easy copy/paste
- **Drag and drop** sharing for large files with just a swipe
- **Mobile desktop** on your PC so you can answer text messages, answer calls or stream your favorite playlist across devices



Thunderbolt-enabled versatility

Connectivity to other devices is never a problem with the M90a Pro Gen4 which features:

- A **Thunderbolt 4** port for high speed data transfer and supports more protocols.
- Optional **Thunderbolt 3** sharing port* allows display sharing to another monitor or PC and share a second SSD storage to laptop or other connected devices with super high data transfer speed.
- Plus 5x USB-A ports, 1x USB-C port

*Disclaimer: Please note this is not a Thunderbolt host port. Customers can connect this optional port to a laptop or desktop Thunderbolt port with a single full-function Type C cable (included).



ThinkCentre M90a Pro Gen4 Seamless end-to-end security

Hybrid and multi-device working makes security critical but challenging. Time-consuming security safeguards can get in the way of employee productivity and can get ignored. Security works best when it's built in across hardware, software, firmware and service so it doesn't interrupt everyday workflow.



Human Presence Detection (HPD) Radar Sensor 2.0

Camera-enabled zero-touch login plus an AI-powered radar sensor that intelligently blurs the display and issues an alert when a non-registered user comes in radar range for enhanced security.



Sensitive data on a drive can be deleted without external tools or removing the drive through **Secure Wipe 2.0**. IT admins can also run log reports to confirm the SSD or HDD has been wiped.



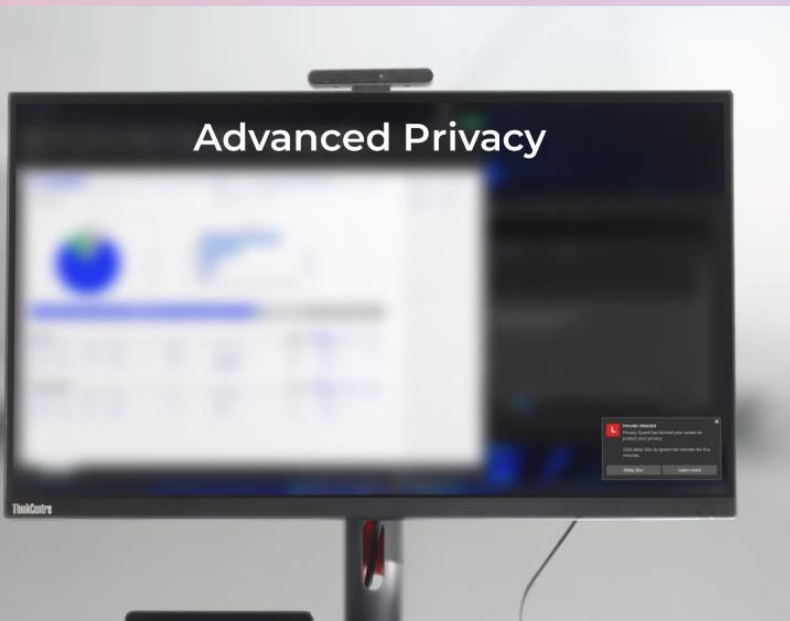
ThinkCentre desktops and all-in-ones are protected by **ThinkShield** and powered by the Intel vPro® platform. This comprehensive, end-to-end security platform helps secure critical corporate data wherever employees are working.



Smart USB Protection keeps employees' ThinkCentre desktops safer from rogue USB storage devices and data leakage. IT professionals can configure USB ports to respond only to keyboards and pointing devices.



Self-healing BIOS intelligently restore the system to an earlier safe state if it ever becomes corrupted, giving employees a safety net.





ThinkCentre M90a Pro Gen4

Exceptional displays max out both productivity and comfort



See the big picture with an extended 27" display

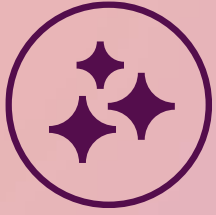
Generously large monitors reduce windows management time by up to 90%.⁷ Cutting down on constant scrolling, dragging windows and moving applications gives you extra time back for more important tasks.



Embrace natural, true-color displays without risking eye health

In the past prioritizing eye comfort meant compromising on true color calibration in your display. No longer. The M90a Pro Gen4's display showcases premium, industry leading color calibration for naturally captured colors while protecting user optical health with industry leading Eye Safe 2.0 and TÜV Eyesafe Display Certifications.

⁷ R. Ball. 2010. Graziadio Business Review



ThinkCentre M90a Pro Gen4 Stunning design for stylish workplaces

Make a statement. Add greater aesthetic impact to personal workspaces or customer-facing office areas.

Sleek designs and modern build materials are applied across our entire ThinkCentre family to compliment the most premium interior design and architectural spaces.



Make the most of your space

Accommodating hybrid working puts desk space at a premium. The AIO form factor cleverly maximizes all available desktop space.



Say goodbye to clutter

Cables can be tricky to manage and distract from an otherwise clean workspace. ThinkCentre's smart cable management system hides unsightly cords while integrated phone and keyboard garages minimize clutter.

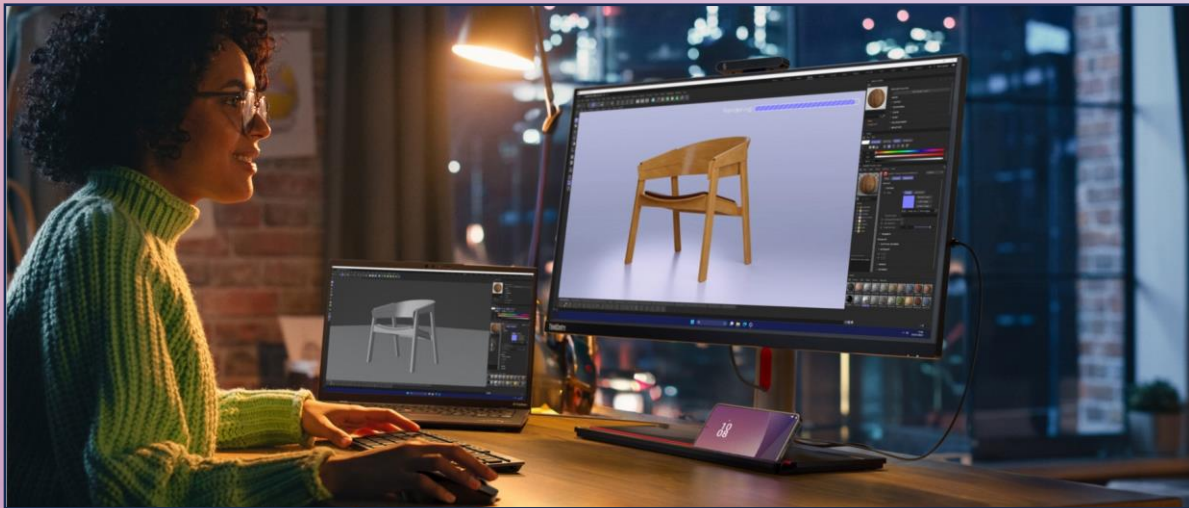




As the workplace evolves, its critical IT support evolves with it

The realities of hybrid working magnifies IT challenges

In a hybrid workplace, supporting device failure and accidental damage becomes complex and costly. Your business depends on employees staying connected in the office, at home or anywhere to maintain their productivity and morale. And your IT teams need to focus on strategic projects to grow the business not the break/fix burden.



If you're investing in setting your teams up with the best devices for modern, hybrid working – like with the ThinkCentre M90a Pro Gen 4 – you need to rethink your IT support.



Remote employees struggling to connect



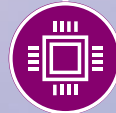
Employees working across multiple devices



Increased risk of accidents and damage



Mounting cybersecurity threats



3hrs of time typically lost by users when they submit an IT support ticket



IT teams weighed down by growing break/fix burden

Take a smarter approach to IT support solutions

All-in-one in every way covering hardware, software and Premier Support Suite

Unleash the full potential of all your teams with **Premier Support Suite** – a seamless premium service solution for our most premium devices.

VIP coverage for IT staff and end users

Troubleshoot connectivity issues in real time with real people

Cover for all kinds of accidental damage with on-site repairs

Rapid resolution focused on delivering a first-time fix



Comprehensive coverage:



- Speak to expert Lenovo engineers direct 24/7/365 wherever and whenever you need it with service availability in more than 100 markets. Includes hardware and OEM software support to get the most from your AIO's advanced features and empower your work.



- Accidental cover gives you the reassurance of a backup for those inevitable knocks, drops, drinks spills and other accidents.



- Parts prioritization and Next Business Day (NBD) on-site labor for repairs.



- See issues before they happen. AI insights deliver proactive and predictive alerts.



- Keep Your Drive and dispose of business data on your terms.

The Plus in Premier Support Plus

Our customers tell us where the true value of human-centric support lies in Premier Support Plus.



“

With Premier Support Suite I feel that it covers almost every problem related to IT which is fantastic, because then we do not have to think about the issues. We know that they all will be taken care of.

Premier Support customer:
IT Manager,
North America,
Banking Sector



“

Overall, we are satisfied with Premier Support Suite. No headache, you get the technical support when you need. They are very involved from start to finish when we have issues and have a high sense of urgency.

Premier Support customer:
IT Director,
North America,
Transport /
Logistics Sector



“

Lenovo's Premier Support Suite gives VIP treatment. (They) understand that IT needs and expects fast and frustration-free support.

Premier Support customer:
IT Manager,
India,
Computer
Software Sector



”

”

”

The ThinkCentre AIO Family



neo 30a Gen4

neo 50a Gen4

neo 50a Gen5

M90a Pro Gen4

M90a Gen5

M70a Gen3

The ThinkCentre AIO family provides a solution for every need

ThinkCentre M series

ThinkCentre neo series

Unrivalled, enterprise class performance with industry leading features

Classic, enterprise solution for customers wanting manageability, security and reliability

Designed with small businesses and new economy professionals in mind

ThinkCentre
M90a Pro Gen4
27" QHD, DDR5

ThinkCentre
M90a Gen 5
23.8" FHD, DDR5

ThinkCentre
M70a Gen 3
21.5" FHD, DDR4

ThinkCentre
neo 50a Gen 5
24"/27" FHD, DDR5

ThinkCentre
neo 50a Gen 4
23.8" FHD, DDR5

ThinkCentre
neo 30a Gen 4
21.5"/23.8"/27"
FHD, DDR4

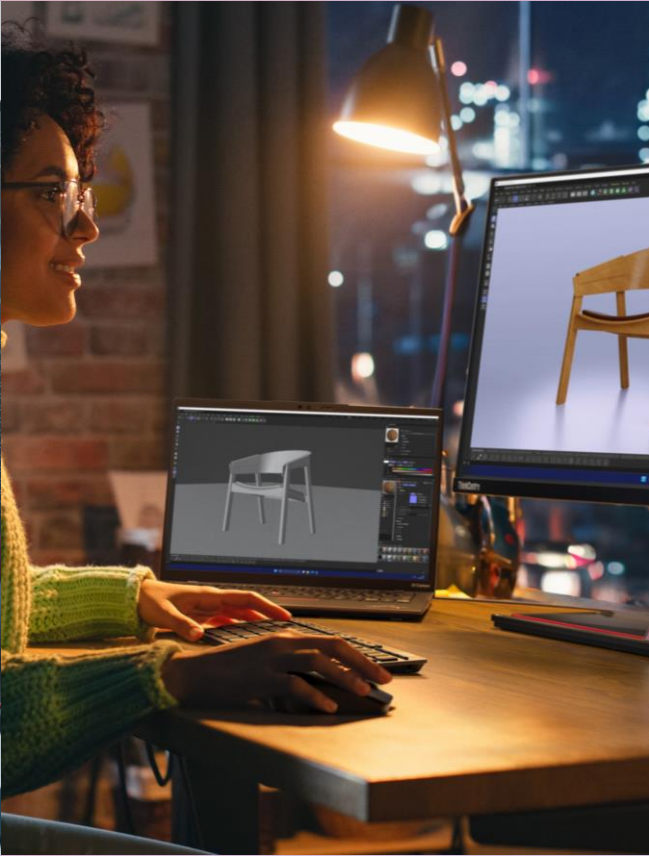


Lenovo

ThinkCentre M Series and neo Series

Different value propositions for specific needs

	ThinkCentre M series	ThinkCentre neo series
Value Proposition	<ul style="list-style-type: none">• Enterprise class, high-end performance, best of expandability• Classic, commercial, ergonomic, ease-of-use mechanical design, sustainable design• Unrivalled premium performance and expandability• Enterprise-grade security & MIL-spec durability• Intel® vPro® Enterprise level manageability	<ul style="list-style-type: none">• Mainstream productivity, value focused• Contemporary, stylish, sustainable design• Intuitive features for smarter performance• Enhanced all-round collaboration
Target Users	<ul style="list-style-type: none">• Customers who need highly reliable devices with uncompromised security, top-notch performance and advanced manageability and best expandability	<ul style="list-style-type: none">• New Workplace Professionals, Content Creators and Ecopreneurs who desire utmost productivity, collaboration in an eco-friendly design, with business level performance & security
Target Segment	<ul style="list-style-type: none">• Enterprise customers who require manageability, advanced security and reliability	<ul style="list-style-type: none">• SMB customers who look for diverse business work scenarios
Key Differences	<ul style="list-style-type: none">• Classic, ergonomic, ease-of-use mechanical design• 13th Gen Intel® Core™ vPro™ processors• Full-featured security• Rock-solid reliability	<ul style="list-style-type: none">• Stylish design with speckled resin CMF• First to Market with 13th Gen Intel® Core™ i7 H-Series processor• Smart Storage² for easy device collaboration and secure data storage• Better green appeal with OBP¹ packaging & paint-free raw material used



Industry Vertical Deep Dive

From hospital wards to creative studios, reception desks and classrooms, versatile ThinkCentre AIO PCs fit anywhere to support a multitude of needs.



Healthcare



Creative Industries



Reception



Education

Lenovo

Product Recommendations:

- Best – M90a Gen5 / M90a Gen3

Customer Challenges

- Digital technology has transformed diagnosis, virtual care and telehealth
- During remote diagnosis or telehealth procedures, displays that lack accuracy can impact patients' health and lives
- Unsecure networks lead to ineffective and insecure remote patient-doctor collaboration
- Poor connectivity of devices leads to cluttered desktops that hinder daily administration.

What they need

- PCs that promote operator and patient care
- Color accuracy and fidelity for reliable diagnosis and treatment
- Easy-to-use smart collaboration to enable efficient and secure remote communication
- Clean and clutter-free desktop environment to help manage heavy workflows

ThinkCentre AIO family offers:



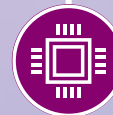
Industry standards

Meets select IEC 60601-1 and 60601-1-2 standards for proven reliability and safety



High res displays

Wide, high-resolution, color accurate displays for an unhindered visual experience for diagnoses and data handling



Data processing Power

Powerful Intel® Core™ processors keep you productive



Versatile connectivity

Wide range of connectivity options for power, data and media transfer



Multi-device collaboration

A powerful hub connecting with tablets used working across the wards



Exceptional security

Intel vPro® platforms provide hardware-based security to help protect sensitive data

This product is not intended for use in diagnosis, cure, treatment or prevention of disease or other medical conditions.



Creative Industries

Product Recommendation:

Best – M90a Pro Gen4

Better – M90a Gen5 / M90a Gen3 / M70a Gen3

Good – neo 50a Gen5 / neo 50a Gen4 / neo 30a Gen4

Key Challenges

- Professionals in creative industries are dependent on digital hardware, frequently connecting multiple devices to work together on a range of projects.
- Poor audio and limited display technology impact creativity in digital content creation and quality of content produced.
- Inferior device features lead to ineffective remote collaboration across different channels.
- Poor connectivity cannot support multiple devices, which impacts efficiency and productivity.

What they need

- Industry-leading display technologies to bring their work to the next level
- Color accuracy and consistency on multiple devices for content creation and viewing
- Seamless collaboration across a desktop ecosystem to enhance productivity and user experience

ThinkCentre AIO family offers:



Extended displays up to 27"

Generously large monitors reduce windows management time



Color calibration

Industry-leading color calibration provides true-color displays



Multi-device collaboration

Thunderbolt-enabled connectivity for high-speed data transfer, SSD storage sharing and multi-display hook ups. Plus a range of USB-A and USB-C ports.



Reception

Product Recommendation:

Best – M90a Pro Gen4

Better – M90a Gen5 / neo 50a Gen5 / M90a Gen3 / M70a Gen3

Good – neo 50a Gen4 / neo 30a Gen 4

Key Challenges

- First impressions count. Your reception sets expectations for every visitor.
- Outsized bulky desktop towers and excessive cabling compromise often compact spaces making it look disorganized.
- Managing workloads across multiple company stakeholders and drop-in visitors.

What they need

- Sleek and stylish design to create an immediate, positive impact.
- Great visualization for managing calendars and schedules.
- Power and productivity for handling customer data and accounts.
- Connectivity to other devices including visitor sign-in.
- Security to protect company data in an open public environment.
- Desktops that compliment the décor of sleek and stylish workspaces.

ThinkCentre AIO offers:



Modest size, sleek design

Modern build materials, stylish looks, compact form factor and smart cable management makes the best first impression.



Generous, extended displays

Great visualization for easy scheduling, productive multi-tasking and eye comfort.



Human Presence Detector (HPD) Radar Sensor 2.0

Camera-enabled zero-touch login plus an AI-powered radar sensor that intelligently blurs the display and issues an alert when a non-registered user comes in radar range for enhanced security.



Education

Product Recommendation:

Best – M90a Pro Gen4

Better – M90a Gen5 / neo 50a Gen5 / M90a Gen3 / M70a Gen3

Good – neo 50a Gen4/ neo 30a Gen4

Key Challenges

- Blended teaching models combining offline elements with rich online content and increasing demand for interaction.
- Small screen size or low-resolution displays lead to low in-class interaction of students
- Eye strain and bad posture are consequences of on-screen learning over extended periods
- Devices with low connectivity fail to cope with the trend of diverse formats of class content.

What they need

- Optimized solutions to support classroom and distance learning from primary to continuing education.
- Smart and intuitive display solutions with full clarity color and high-resolution
- Advanced eye-care technology and ergonomic design for health and wellness
- Easy set-up and clutter-free desktop hub for an enjoyable learning experience

ThinkCentre AIO offers:



Compact size, yet powerful

Schools need a powerful PC that fits into any space without clutter. ThinkCentre AIO PCs with Intel vPro® help maximize instructional time, protect against cyberattacks and empower students to learn from anywhere, anytime.



Natural, true-color displays

Large, extended displays featuring industry leading color calibration and eye-care technology to protect user optical health.



Made for classroom interaction

Built-in mic and camera with Smart Voice feature to customize audio during conferencing and Lenovo Smart Noise Cancellation to filter out undesirable background noise.



Section 4 Wider Benefits

Services and solutions to provide the best support and meet ESG needs.



Sustainable businesses need more sustainable computing

ThinkCentre desktops and all-in-ones are designed with sustainability in mind to help you hit your ESG targets while lowering the cost of investment.



Manufacturing

- 100% of ThinkCentre models released after 2019 contain closed-loop post-consumer recycled plastic.
- Lenovo ThinkCentre desktops contain between 16.1% and 57.2% PCC plastic by weight.
- 90% of plastic packaging by weight for Lenovo PC products will be made from recycled materials by 2025 inc. Ocean Bound Plastic.
- Our desktops are EPEAT rated and TCO certified.*



Power consumption and manageability

- Since 2018, ThinkCentre PCs have become 37% more energy efficient.
- ThinkCentre M series and neo series are ENERGY STAR certified.
- Intel vPro® provides remote manageability to reduce the need for device shipments, deskside support visits, and truck rolls.



Extended life span

- Repair: Desktops are faster and easier to repair which minimizes disruption and extends the lifespan of devices.
- Upgrade: Instead of replacing the entire desktop, ThinkCentre's setup can be upgraded by simply plugging a compatible ThinkCentre Tiny, Thin Client into the back of the monitor.

* Disclaimer: See www.epeat.net and <https://tcocertified.com/product-finder/>

Environmental related Certifications and Regulations



EPEAT registered*

EPEAT system address the full product lifecycle, from design and production to energy use and recycling

See www.epeat.net for list of registrations by country



ENERGY STAR

Ensure the system power consumption even in low power states



EU ErP

Regarding eco-design requirements for computers



RoHS

The restriction of the use of certain hazardous substances in electronic equipment



Ultra Low noise

TÜV assures improved design and component selection for low noise emission from the PC

(22~25dB under idle mode)



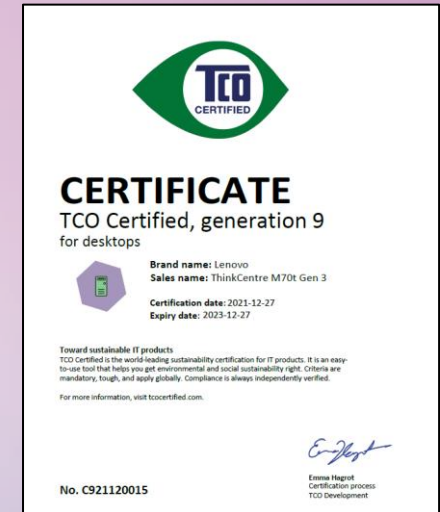
TCO certified*

World-leading sustainability certification for IT products

Disclaimer: See <https://tcocertified.com/product-finder/> for products with this certification

Certifications for Bidding Samples

Disclaimer: Only Applicable on selected scope of products.



ENERGY STAR CERTIFIED Computers	
Lenovo - ThinkCentre neo 50t Gen 3 : 11SC	
Specifications	
ENERGY STAR Unique ID:	2388476
Brand Name:	Lenovo
Model Name:	ThinkCentre neo 50t Gen 3
Model Number:	11SC
Type:	Desktop
Notebooks, Desktops, Integrated Computers, Slate/Tablets, Two-in-one Notebooks, and Portable All-in-one Category for TEC (Typical Energy Consumption) Criteria:	Desktop D1, Desktop D2, Desktop I1 or Integrated Desktop 1, Desktop I2 or Integrated Desktop 2
Category I1: Processor Brand:	Intel
Category I1: Processor Name:	Pentium
Category I1: Operating System Name:	Ubuntu, Windows 10, Windows 11
Category I1: Base Processor Speed Per Core (GHz):	3.7
Category I1: System Memory (GB):	32
Category I1: Default Low-power Mode:	Sleep Mode
Category I1: Long Idle Power Used for Sleep Mode:	No
Category I1: Off Mode (watts):	0.9
Category I1: Sleep Mode (watts):	1.2
Category I1: Low Idle (watts):	11.1
Category I1: Short Idle (watts):	14.6
Category I1: Base TEC Allowance (kWh):	26
Category I1: Functional Adder Allowances (kWh):	32.1
Category I1: TEC of Model (kWh):	53.9

ThinkCentre M70q Gen 3	
Product Summary:	
Product Type:	Desktop
Registered In:	United States
Manufacturer:	Lenovo
EPEAT Tier:	Gold
Registration Date:	2022-03-15
Product Status:	Active
Manufacturer Part Number(s):	11Y5
All unique product identifiers existing for this product may not be listed, please contact EPEAT at EPEAT@GEC.org .	





Comprehensive care for your Lenovo IT assets

Lenovo offers a comprehensive portfolio of services that support the full lifecycle of your Lenovo IT assets. From initial strategic planning to customized configuration, deployment, support, protection, security, and asset recovery—Lenovo has solutions to help you embrace new workplace technologies.



Premier Support Plus

Whether employees are in the office, hybrid, or remote, Premier Support Plus helps IT leaders provide their organization's workforce with the support to do their best work, while freeing IT teams from the break/fix burden. Get the highest level of support, including Lenovo expert engineers for a seamless remote fix; next business day onsite labor and parts prioritization (dependent on market, parts and HW availability); Accidental Damage Protection for inevitable mishaps such as drink spills; Keep Your Drive; sealed battery coverage; and more. Lenovo's human-centered approach is designed to meet support needs 24/7/365, and our proactive and predictive issue detection helps solve issues before they happen.



Lenovo Device-as-a-Service (DaaS)

Combine hardware, services, and software into a single, flexible solution to maintain predictable monthly costs. This innovative, fully-managed model drives down capital IT expenses while ensuring your employees experience the latest technology to keep them secure and productive.



Lenovo Warranty

Lenovo Warranty ensures ThinkCentre is protected by offering a full range of award-winning, flexible services, including depot service, onsite service, warranty extension, sealed battery service, and international warranty service.



Lenovo CO₂ Offset Services

Take tangible climate action and offset the estimated CO₂ emissions across the average lifecycle of your device from manufacturing to shipping, usage and end-of-life and support climate action projects verified by United Nations, CDM, Gold Standard, and Climate Action Reserve. At any time, you can view the details of your offsets and the projects supported through the serial number of your device, thus ensuring complete transparency.



Lenovo Asset Recovery Services

Support a circular economy through secure end-of-life IT asset management. Lenovo Asset Recovery Services helps you mitigate security concerns and maximize asset value, keeping resources circulating wherever possible and recycling assets in an environmentally conscious way.

Smarter
technology
for all

Lenovo

thanks.