



 **Windows 11**

Lenovo recommends Windows 11 Pro.

Lenovo  
**ThinkCentre**

20<sup>th</sup>  
ANNIVERSARY

**Lenovo ThinkCentre Family Guidebook**

**Desktop PCs for a changing world**

20 years of purposeful design and relentless innovation

**Smarter  
technology  
for all**

**Lenovo**

# Workplaces are changing and PC needs are diversifying

COVID reshaped how and where we work – and where we want to work. ‘The office’ now has an extended meaning and new working scenarios are emerging.<sup>1</sup> Computing, like your workforce, needs to be hybrid.



**Businesses are under pressure** from an uncertain economic outlook<sup>2</sup> and pricing needs to be managed. Making smart IT decisions can have a positive impact and **keep your business moving forward**.



The pandemic has come to a clear end and hybrid work is now a standard practice.<sup>3</sup> **Around 70% of employees prefer some split between working from home and from the office.**<sup>4</sup>



Globally only **16%** of companies operate fully remotely **44%** don't allow remote working.<sup>4</sup>



**Employees use an average of 2.5 devices** for work including PCs, smartphones, tablets and wearables.<sup>5</sup>



**89%** of ITDMs **made changes to their IT strategy** due to COVID and **86%** made **investments** to do so.<sup>6</sup>

1 Hybrid. Remote. How our work lives have changed for the better | The Star

2 EY Parthenon. Transforming Uncertainty into opportunity in 2023

3 The Realities of Remote Work (hbr.org)

4 <https://findstack.com/remote-work-statistics/>

5 BYOD Statistics 2022 Zippia.com

6 Lenovo ThinkCentre 2022 Changing Workplace Survey



# Today's employees are digital natives and want smarter tech

By 2025 64% of the global working population will be composed of millennials (born 1981 – 1996) and GenZ (born 1997 – 2009)<sup>8,9</sup>. Born with technology in their hands these groups want consumer grade technology experiences at work<sup>10</sup>. To promote flexibility in where employees can work, leaders are investing in hardware and software that supports continuity under these evolving conditions.<sup>11</sup>



**73%** of ITDMs report that employees have higher expectations of company IT equipment than they did in the past<sup>12</sup>



**90%** employees say that their IT has a direct impact on their overall employee experience at work as well as their productivity<sup>13</sup>



**9 in 10** ITDMs believe the IT equipment they offer staff impacts employee retention<sup>14</sup>

8,9 <https://www.weforum.org/agenda/2021/03/gen-z-unemployment-chart-global-comparisons/>

10 <https://www.linkedin.com/pulse/millennials-75-workforce-2025-ever-anita-lettink/>

11 <https://hbr.org/2021/09/who-is-driving-the-great-resignation>

12 2019 Forrester Lenovo SMB Survey

13 Lenovo ThinkCentre 2022 Changing Workplace Survey

14 <https://elearningindustry.com/how-is-technology-transforming-the-workplace>

## Getting the right tool for the job

PC devices need to be matched to job roles. A one-size-fits-all approach does not work. Modern businesses need to offer employees a combination of desktops and laptops.

**77%** of ITDMs agree the PC set up should be linked to roles and needs

**Desktops are the right choice when large monitors, computing power and speed are critical.**<sup>15</sup>

**+50%** of ITDMs believe that desktops allow employees to get work done more smoothly

**Giving end users the right tool for the job enhances their experience, increases productivity and helps talent acquisition and retention.**<sup>16</sup>

**70%** of business end users would like to be provided with both desktops and laptops to allow them to be more productive while hybrid working

**Providing end-users with both desktops and laptops gives them even greater flexibility.**<sup>17</sup>

# Desktops are the smarter investment choice

Desktops can make a smarter investment choice with affordable initial purchase, less expensive maintenance and availability of replacement parts. But the advantages of desktops go way beyond costs.



Lenovo recommends Windows 11 Pro.



## Powerful Performance

Anyone working with high-quality graphics or processing massive datasets can achieve better productivity with Lenovo Desktops featuring the latest processors and Windows 11 Pro.



## Collaboration

Desktop offers a seamless experience with a multitude of connectivity options - USB ports, VGA/ HDMI/DP to stay connected to other devices.



## Highly Configurable

With desktops, it is easy to upgrade and add more storage, RAM, better graphics cards for additional performance needs.



## Durability & Reliability

Desktops generally have a longer lifespan thanks to their hardware advantages which have gone through rigorous testing for reliability and durability.



## Modern Looks, Compact Design and Better Ergonomics

Desktops are no longer just a big black box. They now include compact and miniaturized form factors all featuring sleek design and modern build materials. A bigger screen, adjustable mountings and a full-sized keyboard minimize physical stress for users working long hours.

# Lenovo ThinkCentre desktops: classic meets modern

20<sup>th</sup>  
ANNIVERSARY

Part of the Lenovo Think family, the ThinkCentre brand has a 20-year legacy guided by three tenets, each balanced against the others so there's no compromise:

**Purposeful Design**  
**Relentless Innovation**  
**Trusted Quality**

This means we're always building on our experience to move forward - rethinking our classic solutions that work well to set new standards for the modern world and helping business to GROW.

You want smarter technology and built-in intelligence for more flexibility in the way you work. The Lenovo ThinkCentre family of desktops featuring Windows 11 Pro help commercial users get work done.

 **Windows 11**

Lenovo recommends Windows 11 Pro.



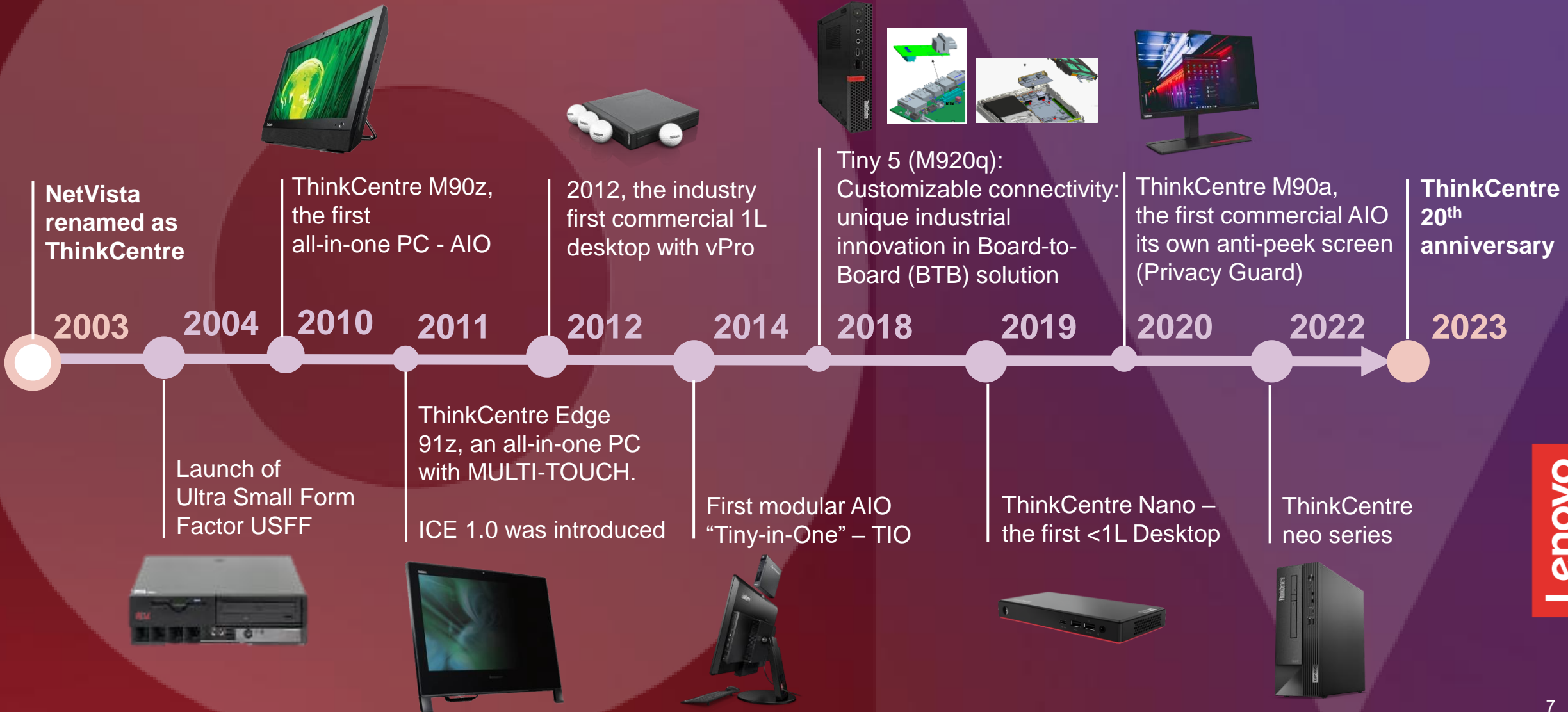
[Click to watch the new ThinkCentre family video](#)

Lenovo

# ThinkCentre 20<sup>th</sup> Anniversary in 2023

20 years of progress pushing the frontiers of desktop design. Imagine where we'll be in 2033.

20<sup>th</sup>  
ANNIVERSARY



Lenovo

# Lenovo recommends Windows 11 Pro for Business

Lenovo recommends Windows 11 for business because, just like our ThinkCentre PCs, it has been designed to meet the rising expectations of employees in a changing workplace.

The Windows 11 OS compliments the hardware and software of ThinkCentre PCs to provide enhanced security, management efficiency and a user experience aligned to modern working.



Lenovo recommends Windows 11 Pro.

## Windows 11: an operating system designed for hybrid work

### Security

Businesses report 58% drop in security incidents with Windows 11 Pro devices.<sup>18</sup>

### Productivity and collaboration

Employees work smoothly without interruptions increasing productivity by up to 15%.<sup>19</sup>

### IT management efficiency

Save time and money with a reported 25% faster deployment than windows 10 resulting in US\$58 time-savings per device.<sup>20</sup>

[For more information on how Windows 11 Pro can add value to your business click here](#)

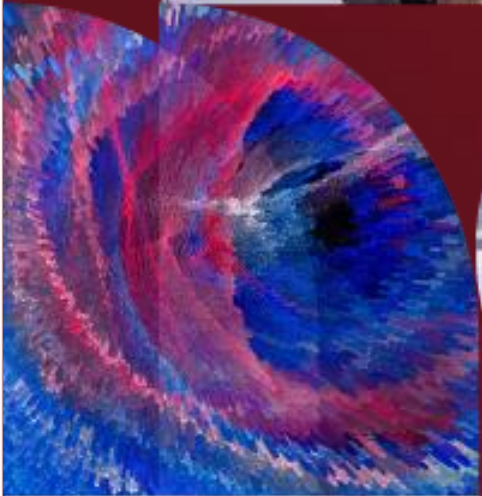


18, 20 Windows 11 Survey Report. Techaisle, February 2022. Windows 11 results are in comparison with Windows 10 devices  
19, The Total Economic Impact™ Of Windows 11 Pro Devices, Forrester, December 2022



Lenovo recommends Windows 11 Pro.

# Flexible support for the modern workforce



**High performance**



**Ease of use & use comfort**



**Enhanced security features**



**Sleek & stylish workspace**



**Customizable solution**



**Sustainable manufacturing & computing**



**Industry-leading viability and durability**



**Flexible support for the modern workforce**

# Discover the Perfect Desktop for You



Lenovo recommends Windows 11 Pro.

Powered by Intel vPro® platform for exceptional performance and productivity and Lenovo ThinkShield to guard your data security without compromising productivity.



## Tower

- High processing power
- Custom expandability
- Highly configurable
- Versatile connectivity
- Large storage



## Small Form Factor

- Dependable performance and speed
- Easy upgradability
- Remote, modern manageability
- Versatile connectivity
- Energy efficient



## Tiny

- Enterprise-level performance
- More OS/ platform solution
- Configurable
- Space-saving
- Versatile connectivity



## All-in-One

- High performance
- Premium, sleek design and display
- Multi-device ecosystem
- Space-saving
- Energy efficient



## Tiny-in-One

- Flexible modularity and simplicity
- Exceptional user experience
- Clean aesthetics
- Space-saving
- Versatile connectivity
- Easy Upgradability

Innovative form factors and sleek design for any office space and any computing needs.



M90t M70t M90s M75s M70s M90q M80q M75q M70q M60q



neo 50t neo 50s neo 50q neo 30a neo 50a M70a M90a M90a Pro TIO Flex TIO Gen 5

Lenovo  
ThinkCentre

 Windows 11

Lenovo

# ThinkCentre Family List Price Positioning

Lenovo  
ThinkCentre

Traditional desktop

All-in-One

Tiny-in-One

\$900+



M90a Pro Gen 4  
27"

\$900



M90t/s/q Gen 4  
17/8.2/1L



M90a Gen 3  
23.8"



M70a Gen 3  
21.5"



TIO 27  
27"

\$800



M80q Gen 4  
1L



neo 50a Gen 4  
23.8"



TIO 24/22 Gen 5  
23.8"/21.5"

\$700



neo 30a Gen 4  
27"

\$600



M70t/s/q Gen 4  
M75s/q Gen 2  
13.6/8.2/1L



neo 30a Gen 4  
23.8"/21.5"



TIO Flex  
27"/23.8"/21.5"

\$500



neo 50t/s Gen 4  
13.6L/7.4L

\$400



neo 50q Gen 4  
neo 50q ThinClient  
1L

<\$400



M60q Chromebox  
M60q Chromebox  
Enterprise  
1L

 Windows 11

Lenovo recommends Windows 11 Pro.

\*The price is starting price, which is various by configuration.

Lenovo

# ThinkCentre M Series Portfolio

Performance. Reliability. Security. Manageability. Sustainability.



Lenovo recommends Windows 11 Pro.



## Tower

**M90t** 17L

**M70t** 13.6L

Highly configurable business-class desktops with remote, modern manageability and high-end performance with custom expandability.



## Small Form Factor

**M90s** 8.2L

**M70s & M75s** 8.2L



## Tiny

**M90q** 1L

**M80q** 1L

**M70q & M75q** 1L

**M60q Chromebox** 1L

Space-saving powerhouse desktops with practical expandability, portability and high-energy efficiency



## All-in-One

**M90a Pro Gen 4** 27"

**M90a** 24"

**M70a** 22"

Customizable, space-saving solution to boost performance and productivity.



## Tiny-in-One

**TIO** 27"

**TIO Gen 5** 22"/24"

**TIO Flex** 27i/24i/24v/22i

Flexible, expandable solution for modular Environments.

Lenovo  
**ThinkCentre**

Lenovo

# ThinkCentre neo Portfolio

Sleek modern design. Multi-device experience. Sustainability.



Lenovo recommends Windows 11 Pro.



## Tower

**50t** 13.6L  
RPL-S/ADL-S

Engineered for productivity combining low noise and energy efficiency



## Small Form Factor

**50s** 7.4L  
RPL-S/ADL-S

Optimized workspace with adaptive power management and space savings



## Tiny/Thin Client

**50q** 1L  
RPL-S/ADL-S

Space-saving powerhouse desktops with practical expandability, portability and high-energy efficiency.



## All-in-One

**50a**  
RPL-H 24"  
**30a**  
RPL-H 27"/24"/22"

High performance, immersive visual and intuitive experience with AI chip camera

Lenovo  
**ThinkCentre**

Lenovo

# ThinkCentre M Series and Neo Series



Different value propositions for specific needs

Lenovo recommends Windows 11 Pro.

## ThinkCentre M series

## ThinkCentre neo series

<b>Value Proposition</b>	<ul style="list-style-type: none"> <li>• Enterprise class, high-end performance, best of expandability</li> <li>• Classic, commercial design</li> <li>• Unrivaled premium performance and expandability</li> <li>• Enterprise-grade security &amp; MIL-spec durability</li> <li>• Intel® vPro® Enterprise level manageability</li> <li>• AMD PRO manageability</li> </ul>	<ul style="list-style-type: none"> <li>• Mainstream productivity</li> <li>• Contemporary, stylish, sustainable design</li> <li>• Intuitive features for smarter performance</li> <li>• Enhanced all-round collaboration</li> </ul>
<b>Target Users</b>	<ul style="list-style-type: none"> <li>• Customers who need highly reliable devices with uncompromised security, top-notch performance and advanced manageability and best expandability</li> </ul>	<ul style="list-style-type: none"> <li>• New Workplace Professionals, Content Creators and Ecopreneurs who desire utmost productivity, collaboration in an eco-friendly design, with business level performance &amp; security</li> </ul>
<b>Target Segment</b>	<ul style="list-style-type: none"> <li>• Enterprise customers who require manageability, advanced security and reliability</li> </ul>	<ul style="list-style-type: none"> <li>• Built for Small and Medium Businesses who look for diverse business work scenarios</li> </ul>
<b>Key Differences</b>	<ul style="list-style-type: none"> <li>• Classic design</li> <li>• Intel® Core™ vPro™ processors</li> <li>• AMD Ryzen™ 7 Cezanne processor</li> <li>• Full-featured security</li> <li>• Rock-solid reliability</li> <li>• Certified with EPEAT Gold (all M series)</li> </ul>	<ul style="list-style-type: none"> <li>• Stylish and environment conscious design in terrazzo material with speckled resin</li> <li>• Smart Cable &amp; Smart Storage<sup>2</sup> for easy device collaboration and data storage with enhanced security</li> <li>• Better green appeal with OBP<sup>1</sup> packaging &amp; paint-free raw material used</li> </ul>

<sup>1</sup>OBP – Ocean Bound Plastic used in packaging

<sup>2</sup> Specs may vary by models

# Range of configurations



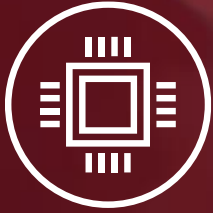
Lenovo recommends Windows 11 Pro.

## ThinkCentre M series

## ThinkCentre neo series

<b>Platform</b>	Intel vPro® Enterprise & Essential / Intel Q670 Win 11 (Pro & Home); Win 10 Pro (Win 11 pro DG)	Intel® Q670, B760 Win 11 (Pro & Home); Win 10 Pro (Win 11 pro DG); Win 10 IoT LeTOS / IGEL / non-OS
<b>Performance</b>	CPU: up to 13 <sup>th</sup> Gen Intel® Core™ i9-13900 GPU: up to NVIDIA GeForce RTX4060, AMD Radeon RX 6400 Memory: up to 128GB DDR5 UDIMM (4400MHz) Storage: up to M.2 2280 2TB SSD and 2TB 7200 HDD PSU: up to ATX 500W 92%, TFX 380W 92% Connectivity: up to WiFi 6E	CPU: up to 13 <sup>th</sup> Gen Intel® Core™ i9-13900 GPU: up to Intel® Arc™ A370M, AMD Radeon RX6400 Memory: up to 64GB DDR5 (4400 MHz) Storage: up to M.2 2280 1TB SSD and 2TB 7200 HDD PSU: up to TFX 380W 92% Connectivity: up to WiFi 6
<b>Reliability</b>	MIL-STD-810H (12items), TÜV Ultra Low Noise cert, UL Anti-Dust cert., MBTF Test, UL Anti Shock & Anti Vibration, Corrosion Resistance	TÜV Low Noise cert, MBTF Test, UL Anti Shock & Anti Vibration, Corrosion Resistance
<b>Security</b>	Advanced Platform + Device + Data Security (22 items) ThinkShield Compliance Up to Windows 11 Secured-Core PC / L3 security requirements Smart USB protection Secure wipe 2.0 BIOS Self Healing (ROT:EC) Self-healing platform (FW resilience 2.0) WMI Computrace & Remote SVP	Basic Platform + Device + Data Security (13 items) ThinkShield Compliance Smart USB protection Secure Wipe 2.0 WMI Computrace & Remote SVP
<b>Sleek design &amp; Multi-device experience</b>	Smart Cable, Smart Appearance, AI-based Noise Cancellation	Stylish design in terrazzo material with speckled resin material Smart Cable, Smart Storage, Smart Appearance, Lenovo Device Manager, AI- based Noise Cancellation
<b>Ease of Use</b>	ICE6.0, SSD & HDD bracket, Memory cover, Full-function Stand, Ultra-Flex Stand, Smart Power On; B2B Card (Flex IO)	ICE6.0, SSD & HDD bracket, Memory cover, Full-function Stand, Smart Power On; B2B Card (Flex IO)



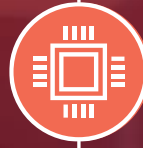


# Uncompromised computing power

Performance is the key to productivity. A powerful setup allows you to spend less time waiting and more time working. ThinkCentre delivers more computing power, faster processors, and larger screens to enhance performance and make better use of your time.



Lenovo recommends Windows 11 Pro.



## Next Gen Processors and Software

ThinkCentre desktop PCs feature a wide range of the latest CPU options plus Windows 11 Pro help you multitask, create content and crunch data for optimized productivity and business performance every day.



## ICE 6.0

ThinkCentre's Intelligent Cooling Engine (ICE) 6.0 delivers optimal performance by controlling internal temperatures and power consumption. Also, it has various modes for different workplaces to fit your needs.



## Choice of form factors

The ThinkCentre family includes a range of compact form factors that don't compromise computing power all offering large screens and full-sized keyboards to enhance productivity.



## Human Presence Detection (HPD) Radar Sensor

The latest HPD 2.0 features a camera enabling zero-touch login/logout for easy bootup and power management as well as an AI-powered radar sensor that intelligently blurs the display and issues an alert when a non-registered user comes in radar range for enhanced security.



## Ready to go experiences

To boost productivity waiting times are minimized with features including Smart Power On, Quick Boot and Modern Standby that take devices from sleep to go in the shortest possible time.



# Customizable solutions to meet every need

ThinkCentre desktops and all-in-ones are uniquely extensible and configurable to perfectly match job function and accommodate personal preferences. A multitude of USB ports and modular design enables expandable connectivity and also allows employees to keep their favorite monitors and keyboards in use.



Lenovo recommends Windows 11 Pro.



## AMD PRO

AMD PRO manageability features enable IT professionals to easily and confidently administer PC fleets within your organization.



## Flex I/O

Connections between ThinkCentre and other hardware is simple and intuitive, allowing you to react to your business needs swiftly. Ample I/O ports and extensibility helps to meet the complex IT needs of today's businesses



## Lenovo ThinkCentre TIOs

ThinkCentre TIO is not only compatible with the ThinkCentre Tiny and ThinkStation Tiny, but can also be upgraded independently, providing you the extra power you need to handle demanding tasks.



## Smart Cable

When you've been working on the road and return to the office, transferring data from laptop to desktop is faster and more secure with ThinkCentre's Smart Cable as compared to a standard USB port which allows you to seamlessly connect devices.



## Customizable BIOS and Software

Customizable modular firmware design for security, manageability including Strong Password, Lenovo Smart USB protection, Lenovo One Key Disposal and Asset Tag.



## Smooth, Clear Conference Calls

Users expect and demand smooth and efficient conference calls to communicate with clarity. ThinkCentre's Smart Voice, con-call base and Lenovo View: Smart Appearance, plus Windows 11 Voice Clarity feature all help users communicate with their colleagues anytime in smooth and clear conference calls helping to speed up meetings.



# Creating sleek and stylish workspaces



Lenovo recommends Windows 11 Pro.



Forget outsized bulky boxes. ThinkCentre' takes design to another level to provide a contemporary look for your workspace.



## Modest size

Say no more to oversized towers under a desk. The modest size of ThinkCentre smart desktops, AIO, and TIO solutions maximize available desktop space and minimize visual clutter.



## Smart cable management

Cables affect the look of a workspace and they can be difficult to manage. ThinkCentre's full function stand and ultra-flex stand, as well as smart cable management helps to hide unsightly cords. Integrated phone and keyboard garages minimize clutter.



## Sleek design and modern build materials

A desktop should compliment the décor of a workspace. The sleek designs and modern build materials applied across the ThinkCentre family provides an enhanced visual effect that makes a statement and adds impact. Neo series desktops feature a terrazzo front bezel for a uniquely artisanal look.



## Mounting and bracket

Simplicity is the hallmark of good design and ThinkCentre's mounting and bracket helps deliver a minimalist look and feel.



# Ergonomic design for the most comfortable working experience

Working long hours in an incorrect position may cause muscle injuries or lower back pain. ThinkCentre desktops provide an ergonomic display and keyboard setup which promotes a healthy typing position.



## Flexible, adjustable mountings adapt to any sitting or standing position

ThinkCentre's full function stand and ultra flex stand of M AIO allow users to find their optimal position for working long-hours, whether it is standing or sitting, users can simply adjust the mountings with no tools needed.



## Large screens certified with eye-care certifications

ThinkCentre screens have obtained various certifications including TÜV Rheinland Eye Comfort, TÜV Rheinland Low Blue Light, TÜV Rheinland Flicker Free, TÜV Low Blue Light, TÜV Ultra Low Noise and Eyesafe Display Certification.



## Windows 11

Lenovo recommends Windows 11 Pro.



## Wireless full-sized keyboards to boost your productivity

To provide a comfortable and healthy typing position throughout the day, ThinkCentre users can connect their desktops to wireless full-sized keyboards according to their preference. The smart power on feature also allows users to turn on the desktop with just the keyboard.





# Time Saving In Device-Deployment and Provisioning



With the power of Windows 11 Pro, IT staff can avoid spending time on incumbent PCs checking if they were compliant with or capable of running Windows 11 security features.



## Smooth transition

Windows management tools enable admins to monitor and manage Windows 10 and Windows 11 devices at the same time as both platforms are able to coexist. Having visibility over all devices in your organization helps identify who is in most need of a new machine, shortening planning cycles and making the transition to Windows 11 devices smoother.



## Easy security management

Windows management tools enable admins to monitor and manage Windows 10 and Windows 11 devices at the same time as both platforms are able to coexist. Having visibility over all devices in your organization helps identify who is in most need of a new machine, shortening planning cycles and making the transition to Windows 11 devices smoother.



## Windows Autopilot

Windows Autopilot helps IT staff avoid manual work in creating a back-end database connecting hardware hashes to customer tenants. Using an OEM-optimized version of Windows Client, devices can be preconfigured before distributing to employees.



## Security

Businesses report 58% drop in security incidents with Windows 11 Pro devices<sup>21</sup>.



## IT management efficiency

Save time and money with a reported 25% faster deployment resulting in US\$58 time-savings per device<sup>22</sup>.



# Protect your data with built in security

Increasing cybersecurity threats and a distributed workforce makes security a priority and a challenge. ThinkCentre comes with built-in, automatic security features that protect user data effortlessly without interrupting workflow.



Lenovo recommends Windows 11 Pro.



ThinkCentre desktops and all-in-ones are protected by **ThinkShield** and powered by the Intel vPro® platform. This comprehensive, end-to-end security platform helps secure critical corporate data wherever employees are working.



**Smart USB Protection** keeps employees' ThinkCentre desktops safer from rogue USB storage devices and data leakage. IT professionals can configure USB ports to respond only to keyboards and pointing devices.



Sensitive data on a drive can be deleted without external tools or removing the drive through **Secure Wipe 2.0**. IT admins can also run log reports to confirm the SSD or HDD has been wiped.



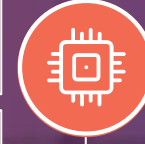
**Secured-core PCs** running Windows 11 and/or Microsoft Pluton have an added layer of security architecture for extra protection from firmware attacks.



**Wi-Fi 6** strengthens encryption and authentication algorithms to better protect corporate data.



**Self-healing BIOS** intelligently restore the system to an earlier safe state if it ever becomes corrupted, giving employees a safety net.



**Intel vPro® and 13<sup>th</sup> Gen Intel® Core™ processors**, along with **exclusive Intel® Hardware Shield**, include hardware-based, multilayer security that helps reduce the attack surface of a PC and assists in active monitoring against attacks without bogging down productivity due to lost performance.



Windows 11 devices arrive with chips for **TPM 2.0** enabled. Encryption keys stored securely inside TPM 2.0 help prevent malicious attacks during boot up.



**Windows Autopatch** is a cloud service that automates updates to Windows software to support security and performance minimizing the risk organizations are exposed to by the time required for manual patching.



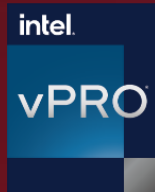
**AMD Memory Guard and Ryzen PRO** security solutions offer built-in protection for sensitive data at rest and in transit.



# Working in partnership to optimize business PCs for the modern workforce.

 **Windows 11**

Lenovo recommends Windows 11 Pro.



Powered by the latest Intel® and AMD processors for an unrivalled business PC solution



**Lenovo**

**Think**

Think portfolio hardware engineering  
ThinkShield security  
Lenovo Endpoint Management  
Lenovo Modern IT Services



Built for modern business with security by design





# IT meets ESG

Business leaders, employees and consumers now realize businesses need to be more considerate of the impact their operations have on the wellbeing of the planet. Many businesses are now setting carbon net-zero goals and need to follow through on these commitments with action plans. IT strategy and ESG strategy need to be aligned if these plans are to be realized.



## Emissions

Today, IT accounts for **4% of total Greenhouse Gas Emissions**. That could rise to **14% by 2040**<sup>7</sup>.



## ESG strategy

**8 in 10 ITDMs** in companies with a current / developing ESG strategy agree that IT purchases will be a key consideration of it.<sup>8</sup>



## A priority for Employees

**46% of Millennials and 50% of Gen Zs** are actively pressuring businesses to prioritize action against climate change. 55% reported that before accepting a job, they research brands' environmental impact and policies. More than 40% of Millennials and Gen Z have already or would switch jobs or sectors over climate concerns.<sup>9</sup>

<sup>7</sup> Tech for sustainability: What IT and developers can do | TechTarget

<sup>8</sup> Lenovo ThinkCentre Changing Workplace Survey 2022

<sup>9</sup> Bloomberg Business July 2023







# Sustainable businesses need more sustainable computing



ThinkCentre desktops and all-in-ones are designed with sustainability in mind to help you hit your ESG targets while lowering the cost of investment.



## Manufacturing

- 100% of ThinkCentre models released after 2019 contain closed-loop post-consumer recycled plastic
- 90% of plastic packaging by weight for Lenovo PC products will be made from recycled materials by 2025 inc. Ocean Bound Plastic.
- Lenovo ThinkCentre desktops contain between 16.1% and 57.2% PCC plastic by weight
- Some of our desktops are EPEAT rated and TCO certified\*



## Power consumption

- Since 2018, ThinkCentre PCs have become 37% more energy efficient.
- ThinkCentre M series and Neo series ENERGY STAR certified



## Extended life span

- Repair: Lenovo support customer self repair to extends the lifespan of devices after device warranty expiration.
- Upgrade: Instead of replacing the entire desktop, ThinkCentre's setup can be upgraded by simply plugging a compatible ThinkCentre Tiny, Thin Client into the back of the monitor.

\* See [www.epeat.net](http://www.epeat.net) and <https://tcocertified.com/product-finder/>

# Environmental related Certifications and Regulations



## EPEAT registered<sup>1</sup>

EPEAT system address the full product lifecycle, from design and production to energy use and recycling



## ENERGY STAR

Ensure the system power consumption even in low power states



## EU ErP

Regarding eco-design requirements for computers



## RoHS

The restriction of the use of certain hazardous substances in electronic equipment



## Ultra Low noise

TÜV assures improved design and component selection for low noise emission from the PC (22~25dB under idle mode)



## TCO certified<sup>2</sup>

World-leading sustainability certification for IT products

1 See [www.epeat.net](http://www.epeat.net) for list of registrations by country

2 See <https://tcocertified.com/product-finder/> for products with this certification

3 Only Applicable on selected scope of products.

## Certifications for Bidding Samples<sup>3</sup>



ENERGY STAR CERTIFIED Computers	
Lenovo - ThinkCentre neo 50t Gen 3 : 11SC	
Specifications	
ENERGY STAR Unique ID:	2388476
Brand Name:	Lenovo
Model Name:	ThinkCentre neo 50t Gen 3
Model Number:	11SC
Type:	Desktop
Notebooks, Desktops, Integrated Computers, Slate/ Tablets, Two-in-one Notebooks, and Portable All-in-one Category for TEC (Typical Energy Consumption) Criteria:	Desktop D1, Desktop D2, Desktop I1 or Integrated Desktop 1, Desktop I2 or Integrated Desktop 2
Category I1: Processor Brand:	Intel
Category I1: Processor Name:	Pentium
Category I1: Operating System Name:	Ubuntu, Windows 10, Windows 11
Category I1: Base Processor Speed Per Core (GHz):	3.7
Category I1: System Memory (GB):	32
Category I1: Default Low-power Mode:	Sleep Mode
Category I1: Long Idle Power Used for Sleep Mode:	No
Category I1: Off Mode (watts):	0.9
Category I1: Sleep Mode (watts):	1.2
Category I1: Long Idle (watts):	11.1
Category I1: Short Idle (watts):	14.6
Category I1: Base TEC Allowance (kWh):	26
Category I1: Functional Adder Allowances (kWh):	32.1
Category I1: TEC of Model (kWh):	53.9

ThinkCentre M70q Gen 3	
Product Summary:	
Product Type:	Desktop
Registered In:	United States
Manufacturer:	Lenovo
EPEAT Tier:	Gold
Registration Date:	2022-03-15
Product Status:	Active
Manufacturer Part Number(s):	11Y5
All unique product identifiers existing for this product may not be listed, please contact EPEAT at <a href="mailto:EPEAT@GEC.org">EPEAT@GEC.org</a> .	



# ThinkCentre<sup>M</sup> Environmental Features Checklist

- Package: 30% innovative Ocean-Bound-Plastic (OBP) is being used in the system bag.
- Material: PCC recycled ABS plastic used chassis for all ThinkCentre models.
- Eco-labels & Service: CO2 Offset Service is available for all products.

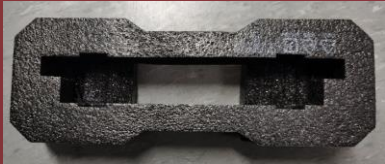



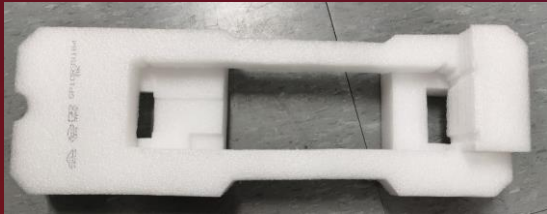

Product Name	Sustainable Packaging				Sustainable Material	Eco-labels & Service			
	EPE Cushion	OBP Thermal Shell	System Bag	FSC Paper	Recycled Material	CO2 Offset Service	TCO	EPEAT	Energy Star
M90T Gen4	LSSC Ready <sup>[1]</sup>	--	30% OBP	Ready by 23CQ3	85% PCC ABS	optional	9.0	Gold / Silver	Y
M90S Gen4	LSSC Ready	Ready by CY24M	30% OBP	Ready by 23CQ3	85% PCC ABS	optional	9.0	Gold / Silver	Y
M70T Gen4	LSSC Ready	--	30% OBP	Ready by 23CQ3	85% PCC ABS	optional	9.0	Gold / Silver	Y
M70S Gen4	LSSC Ready	Ready by CY24M	30% OBP	Ready by 23CQ3	85% PCC ABS	optional	9.0	Gold / Silver	Y
M75S Gen4	LSSC Ready	Ready by CY24M	30% OBP	Ready by 23CQ3	85% PCC ABS	optional	9.0	Gold / Silver	Y
M90Q Gen4	LSSC Ready	Y	30% OBP	Ready by 23CQ3	85% PCC ABS	optional	9.0	Gold	Y
M80/70Q Gen4	LSSC Ready	Y	30% OBP	Ready by 23CQ3	85% PCC ABS	optional	9.0	Gold	Y
M75Q Gen4	LSSC Ready	Y	30% OBP	Ready by 23CQ3	85% PCC ABS	optional	9.0	Gold	Y
M90A Pro Gen4	LSSC Ready	--	30% OBP	Y	65% PCC ABS	optional	9.0	Gold	Y

# Environmental Features Checklist

- Package: 30% innovating Ocean-Bound-Plastic (OBP) is being used in the system bag.
- Material: PCC recycled ABS plastic used chassis for all ThinkCentre models.
- Eco-labels & Service: CO2 Offset Service is available for all products.

Marketing Name	Sustainable Packaging			Sustainable Material	Eco-labels & Service			
	30% OBP Thermal Shell	System Bag	FSC Paper	Recycled Material	CO2 Offset Service	TCO	EPEAT	Energy Star
TC neo 50t Gen4	--	30% OBP	Ready by 23CQ3	85% PCC ABS	optional	9.0	Gold / Silver	Y
TC neo 50s Gen4	--	30% OBP	Ready by 23CQ3	85% PCC ABS	optional	9.0	Gold / Silver	Y
TC neo 50a 24 Gen4	--	30% OBP	Y	65% PCC ABS	optional	--	Silver	Y
TC neo 30a 27 Gen4	--	30% OBP	Y	65% PCC ABS	optional	--	Silver	Y
TC neo 30a 24 Gen4	--	30% OBP	Y	65% PCC ABS	optional	--	Silver	Y
TC neo 30a 22 Gen4	--	30% OBP	Y	65% PCC ABS	optional	--	Silver	Y
TC neo 50q Gen4	Y	30% OBP	Ready by 23CQ3	85% PCC ABS	optional	9.0	Gold / Silver	Y

# Sustainable Packaging vs. Normal Packaging

<b>Sustainable Packaging</b>	<b>EPE Cushion (90%PIC)</b>	<b>Thermal Shell (30%OBP+70%PIC)</b>	<b>System Bag (30%OBP)</b>	<b>Paper of FSC Certification</b>
	Save estimated 1.71 kg CO2 eq / kg.	Save estimated 1.59 kg CO2 eq./kg	Save estimated 1.29 kg CO2 eq./ 1kg	Save estimated 17 trees /ton FSC material
				
<b>Normal Packaging</b>	<b>Traditional EPE Cushion (0% PIC)</b>		<b>Normal System Bag (0% PIC)</b>	<b>Paper</b>
				Box w/o FSC logo



**Acronym:**

- PCC = Post Consumer Content, recycled materials from customers
- PIC = Post Industry Content, recycled materials from internal factories
- OBP = Ocean Bound Plastic, reducing plastic spill into the sea
- EPE = Expanded Polyethylene
- FSC = Forest Stewardship Council



## Durability and reliability in any environment

To safeguard your work, Lenovo ThinkCentre PCs are tested for more than 10,000 hours in Lenovo and independent laboratories to ensure military-level durability so you have the assurance that your PC will continue to operate reliably no matter what environment you are working in for a sustained and consistent user experience.

[To find out more about our rigorous testing click here](#)





# Meeting industry-leading standards for viability, durability and reliability

Lenovo is dedicated to constantly improving product quality. All ThinkCentre desktops have gone through rigorous testing for reliability and durability to achieve industry-leading standards. With the solid build quality, ThinkCentre delivers a reliable and trusted business experience to users.



## Military-grade quality and reliability

US Department of Defence Environmental Engineering Considerations and Laboratory Tests MIL-STD-810H Certification



## UL Anti-dust certification

Dust blocks filters and prevents air flowing through the PC casing making fans work harder to keep it cool. ThinkCentre desktops are UL Anti-dust certified protecting against overheating and acoustic issues and enhancing reliability



## TUV Low Surface Vibration

ThinkCentre towers and SFF desktops offer users a stable, quiet working environment thanks to a unique double-layered silicon foot designed by Lenovo which reduces vibration and noise cause by the HDD.



## TUV Shock Resistance

Data is important and Lenovo ThinkCentre would like to help users and businesses to protect your PC from physical damage of the HDD and loss of local data. ThinkCentre Towers and SFF desktops feature shock-proof design tested under severe conditions.



Partner with TUV to maximize customer experience, scan the QR code to know more



# ThinkCentre MIL-STD Testing Leadership

## Industry-leading product testing for durability and reliability

Since 2007, Lenovo has used the US Department of Defense's \*MIL-STD 810H standards to help our products strike a perfect balance value and durability right out of the box.

Lenovo ThinkCentre products are currently tested across 12 parameters using 26 procedures:



### Vibration

Tested while running and turned off



### Fungus

28 days with common fungus sources



### Humidity

95% relative humidity, at 30°C-60°C



### Altitude

Tested for operations at 15,000 feet



### High temperature

Storage: 63°C for 24 hrs.  
Operation: 43°C for 2 hrs.



### Solar radiation

Three 24-hr cycles of simulated UV radiation



### Low temperature

Storage: -25°C for 24 hrs.  
Operation: -21°C for 2 hrs.



### Shock

Transit dropped tested in every corner  
26 times



### Contamination by fluids

Chemicals on exposed surface  
5~10min



### Temperature shock

Tested in temperature shocks cycles  
going from -25°C to 60°C for 6hrs



### Sand and dust

Anti-dust certified protecting against  
thermal and acoustic issues and  
enhancing reliability



### Salt fog

24hrs spray + 24hrs dry, 2 cycles





# Comprehensive care for your Lenovo IT assets

Lenovo offers a comprehensive portfolio of services that support the full lifecycle of your Lenovo IT assets. From initial strategic planning to customized configuration, deployment, support, protection, security, and asset recovery—Lenovo has solutions powered by to help you embrace new workplace technologies.



## Premier Support Plus

Whether employees are in the office, hybrid, or remote, Premier Support Plus helps IT leaders provide their organization's workforce with the support to do their best work, while freeing IT teams from the break/fix burden. Get the highest level of support, including Lenovo expert engineers for a seamless remote fix; next business day onsite labor and parts prioritization (dependent on market, parts and HW availability); Accidental Damage Protection for inevitable mishaps such as drink spills; Keep Your Drive; sealed battery coverage; and more. Lenovo's human-centered approach is designed to meet support needs 24/7/365, and our proactive and predictive issue detection helps solve issues before they happen.



## Lenovo Device-as-a-Service (DaaS)

Combine hardware, services, and software into a single, flexible solution to maintain predictable monthly costs. This innovative, fully-managed model drives down capital IT expenses while ensuring your employees experience the latest technology to help keep them secure and productive.



## Lenovo Warranty

Lenovo Warranty ensures ThinkCentre is protected by offering a full range of award-winning, flexible services, including depot service, onsite service, warranty extension, sealed battery service, and international warranty service.



## Lenovo CO<sub>2</sub> Offset Services

Take tangible climate action and offset the estimated CO<sub>2</sub> emissions across the average lifecycle of your device from manufacturing to shipping, usage and end-of-life and support climate action projects verified by United Nations, CDM, Gold Standard, and Climate Action Reserve. At any time, you can view the details of your offsets and the projects supported through the serial number of your device, thus ensuring complete transparency.



## Lenovo Asset Recovery Services

Support a circular economy through end-of-life IT asset management with enhanced security. Lenovo Asset Recovery Services helps you mitigate security concerns and maximize asset value, keeping resources circulating wherever possible and recycling assets in an environmentally conscious way.



Smarter  
technology  
for all

Lenovo

thanks.

LENOVO, THINKCENTRE, THINKSHIELD and THINKSTATION are trademarks of Lenovo. Intel, Intel Core and vPro are trademarks of Intel Corporation or its subsidiaries in the U.S. and/or other countries. AMD, RYZEN and Radeon are trademarks of Advanced Micro Devices. NVIDIA, GEFORCE and RTX are trademarks of NVIDIA Corporation. Inc. Wi-Fi is a trademark of Wi-Fi Alliance. TÜV is a registered trademark of the TÜV Rheinland Group. The Bluetooth® word mark and logos are registered trademarks owned by Bluetooth SIG, Inc. and any use of such marks by [Lenovo/Motorola] is under license. All other trademarks are the property of their respective owners. ©2023 Lenovo Group Limited.

# Introducing Windows 11 Pro for Business

## Defend against evolving threats

Organizations can support hybrid work securely no matter where their employees work using Windows 11 Pro.

### Secured-Core PCs

Secured-core PCs are the most secure Windows PCs ever, with powerhouse protection out of the box that proactively helps prevent infections, protect information, and reduce security complexity.

### Pluton Protection Designed by Microsoft

Microsoft Pluton hardware security provides additional protection against sophisticated firmware-level attacks and is available on select devices.

### Enhanced Collaboration With Teams

Windows 11 is designed to work seamlessly with Microsoft 365, including Microsoft Teams.

### Windows Release Health

Get information on the latest Windows releases and servicing milestones, plus resources and safeguards to help plan your next update.

### Windows Update for Business

Use Windows Update for Business to help ensure that devices anywhere have the latest security and Windows features.



Lenovo recommends Windows 11 Pro.

# Benefits of Windows 11 Pro and modern hardware

Three-year 250% ROI and payback in less than 6 months

The Forrester Total Economic Impact™ study found that Windows 11 devices:

- Reduced the risk of a successful security attack by **20%**
- Increased productivity for security and IT teams by **20%**
- Reduced the number of incoming help desk tickets by **80%**
- Decreased time for deployment of devices by **25%**
- Increased end-user productivity by **15%**
- Produced a reduction in costs for supporting legacy technology of **4%**



Lenovo recommends Windows 11 Pro.

## Key Assumptions

- **\$1 billion in annual revenue**
- **2,000 total employees**
- **4-year hardware refresh cycle**
- **Migrates to Window 11 devices**

<sup>1</sup> Source: Commissioned study delivered by Forrester Consulting “The Total Economic Impact™ of Windows 11 Pro Devices”, December 2022. Note, quantified benefits reflect results over three years combined into a single composite organization that generates \$1 billion in annual revenue, has 2,000 employees, refreshes hardware on a four-year cycle, and migrates the entirety of its workforce to Windows 11 devices.

# Windows 11 Pro brings extra value add

## Supporting Innovation Culture



Our company wants to try new features with Windows 11 devices as it will enhance our innovation culture. We're currently focusing on the new devices adding value to our Zero Trust strategy."

- Head of information system dept., manufacturing

## Connectivity for Hybrid Working



Having good Wi-Fi or Bluetooth connectivity is important because we have over half our workers still working hybrid. We're also piloting edge-based devices across our plants, and having Windows 11 devices with better connectivity has been very valuable."

- Chief technology officer, manufacturing

## Greater Management Efficiency



A feature that resonates across the board is having TPM 2.0 chips and not having to add those to devices. We also no longer have to actively monitor our TPM management console..."

- Chief technology leader, technology



Lenovo recommends Windows 11 Pro.

<sup>1</sup> Source: Commissioned study delivered by Forrester Consulting "The Total Economic Impact™ of Windows 11 Pro Devices", December 2022. Note, quantified benefits reflect results over three years combined into a single composite organization that generates \$1 billion in annual revenue, has 2,000 employees, refreshes hardware on a four-year cycle, and migrates the entirety of its workforce to Windows 11 devices.