

# Lenovo + Microsoft Windows 11 upgrade reference guide for higher education

Modern Lenovo devices running Microsoft Windows 11 enable you to better support learning, enhance teaching, and prepare your students for the workplace of the future.



Lenovo recommends  
Windows 11 Pro for Business.

Smarter  
technology  
for all

Lenovo







Lenovo recommends  
Windows 11 Pro for Business.

## In this guide

- 4 Windows 11 in brief
- 5 Built-in security
- 6 IT productivity
- 7 Lenovo + Microsoft optimizations
- 8 Smarter deployment
- 9 Six steps to a smart migration
- 10 Common questions
- 11 Additional resources



# Upgrade to a better experience across your institution

Windows 11 delivers new productivity, security, and AI readiness for students, faculty, and staff. It provides powerful tools to learn, teach, collaborate, and create, not only enhancing instruction but also ensuring accessibility for diverse learning needs.

This guide is designed to set you on the path to migration — highlighting features, benefits, IT management advantages, and practical steps to get started.

Lenovo will work with you to create the best migration strategy for your unique needs. We're here to help — with guidance, services, and devices that optimize the power of Windows 11 now and for the future.



Lenovo ThinkPad X1 2-in-1

 **Windows 11**

Lenovo recommends  
Windows 11 Pro for Business.



## Three reasons to upgrade now

**Support for Windows 10 is ending October 14, 2025**

- 1** Ensure you are protected, supported, and future-proofed with the latest devices and OS.
- 2** Give yourself time to plan, ensure inventory availability, and manage the transition.
- 3** Eliminate the maintenance and repair costs of aging equipment.

# Windows 11 in brief



**Powerful for users.** Offers new features and functionality designed for highly personalized, productive, accessible, and secure education experiences.

- ✓ **Simple, powerful UX** to improve productivity and satisfaction.
- ✓ **Customizable desktop, workflow automation, and snap layout** for a personalized workday.
- ✓ **Smarter collaboration** with Microsoft Teams and accessibility features like live audio captioning, built-in screen reader, voice typing, and more.



**Consistent for IT.** Based on the same foundation as Windows 10, supports the same IT management tools.



**AI enhancements for all.** Copilot in Windows delivers future-focused capabilities including AI-powered security, multitasking, search, lesson planning, content creation, and videoconferencing improvements.



**End-to-end security for the institution.**

- ✓ **Zero Trust-ready OS** to protect data and access, anywhere.
- ✓ **Powerful built-in protections** including hardware-based isolation, encryption, and malware defenses.



## High-value benefits by the numbers

Benefits of Windows 11 devices revealed by a Forrester economic impact study included:<sup>1</sup>

**250%**

ROI in three years and payback in less than six months

**20%**

reduced risk of successful security attack

**20%**

increased productivity for security and IT teams

**80%**

reduced number of help desk tickets

**25%**

decreased time for device deployment



Lenovo recommends  
Windows 11 Pro for Business.

# Built-in security — and more of it than ever

## Powerful, pre-enabled protection

Windows 11 is the most secure Windows yet, backed by layers of powerful default protection that can drop security incidents a reported **58%**.<sup>4</sup>



### Built-in security.

Ensures protections are ready without having to configure devices. Microsoft has increased the security baseline by requiring a security chip (TPM 2) and ensuring protections are built in and turned on by default to protect from malware and sophisticated attacks.



### Pre-enabled virtualization-based security (VBS) and hypervisor-enforced code integrity (HVCI).

Safeguards the operating system and information stored in memory. Powerful hardware-based security built in and enabled by default led to a reported 3.1x reduction in firmware attacks.<sup>4</sup>



### Innovative security on Lenovo devices running Windows 11.

Protect against tomorrow's threats with Zero Trust-ready OS and AI endpoint protection by SentinelOne, hardware isolation, encryption, malware protection, and integrated hardware and OS safeguards.



Lenovo recommends  
Windows 11 Pro for Business.



# 114%

Higher education cyber incidents increased 114% between 2020 and 2022.<sup>2</sup>



# \$3.9M

Average cost of a higher education data breach: \$3.9M in 2022.<sup>3</sup>

## Lenovo security innovations fortify your Windows 11 devices

**ThinkShield.** Explore fully customizable hardware, software, and services solutions to secure your institution.

**Secure Wipe 2.0.** Delete sensitive data on a drive without external tools.

**Firmware Resiliency 2.0.** Expand self-healing capabilities beyond the core BIOS.

### Human presence detection.

Screen lock detects when the user leaves and automatically locks the system.

**Non-soldered SSDs.** Remove before servicing to secure data and keep it under IT control.

**Intelligent PC diagnostics.** Use a simple smartphone app to track more precise servicing results.



# IT productivity from the get-go

With Windows 11, you can deploy remote PCs through the cloud in compliance with institutional policies. Expanded support for group policy administrative templates in mobile device management solutions like Microsoft Endpoint Manager enables you to easily apply the same security policies to on-premises and remote devices.\*

Cloud-managed security updates offer additional control. Approve, schedule, and monitor any Windows Update content through the cloud, including security updates, drivers, and firmware.

Windows 11 also allows for better performance consistency — critical for IT — across device configurations with new minimum system requirements.



Lenovo recommends Windows 11 Pro for Business.



# Hand-in-hand optimizations

All the Windows 11 benefits are amplified by Lenovo device technology — performance innovations that elevate Windows 11 user-focused features.



**AI-enhanced.** Gets things done more effectively and efficiently with the help of AI-powered search, content generation, and security advancements from Copilot in Windows.



**5G and Wi-Fi 6 antenna designs.** Newly engineered to provide epic connectivity, with Wi-Fi 7 available on some devices.



**Smart Standby.** A unique Lenovo enhancement that allows users to manage and configure low-power states to maximize battery life.



**Intelligent cooling.** Adjusted through the Windows power slider bar and works in auto mode by default.



**Always On/Always Connected.** Optimizes productivity and collaboration by empowering full wireless performance connectivity in any mode — even with the lid closed.



**Optimized audio.** Dolby Voice for clearer sound in noisy environments and a heightened collaboration experience on Microsoft Teams.



Lenovo recommends Windows 11 Pro for Business.

These Lenovo devices are perfect for higher education and designed to make the most of Windows 11.

## For students

### Lenovo ThinkPad® P1 mobile workstation

Portability meets performance with lightning-fast graphics and processing to handle compute-intensive coursework or research needs — anytime, anywhere.



## For educators

### Lenovo ThinkPad® X1 2-in-1

The ultra-flexibility mobile students and educators want and need in a versatile, AI-ready laptop that's a tablet, sketchpad, and more.



## Streamline administrative tasks

- Pin virtual apps to the taskbar and run them as if on the hard drive with Azure Virtual Desktop.\*\*
- Automate tasks across applications with a low code-guided process and pre-built connectors.
- Search apps, websites, Windows settings, research, databases, files, or personnel from one place with Microsoft Search.\*\*\*

# Smarter deployment that future-proofs your technology

As academic, administrative, research, and security demands increase, your institution will need devices that can adapt to continuous advancements in Windows. Lenovo has developed a future-proof solution for your deployments and evolving AI strategies.

Lenovo TruScale Device as a Service (DaaS) can help by taking care of everything from provisioning and deployment through end-of-life reclamation for one predictable monthly fee.

In addition to freeing up people and budget resources, Lenovo TruScale DaaS can help you equip more users for less upfront cost, adapt solutions to specific demands, and even pause when needed.

Keep your institution future-proofed and equipped with the most up-to-date hardware and software, eliminating the need to manage future upgrades and migrations.

TruScale DaaS gives you worry-free, end-to-end lifecycle device management with flexible payment options and one point of contact. Our education experts help assess your needs and deliver a range of services to get you up and running quickly and smoothly.



 **Windows 11**

Lenovo recommends  
Windows 11 Pro for Business.



# Six steps to a smart migration

# 1

**Enlist an expert.** As a trusted Microsoft partner with certified global expertise, Lenovo can help deploy, configure, and support the latest solutions so you can unlock all the benefits of Windows 11.

# 2

**Learn the system requirements.** Review the **basic and features-specific requirements** for installing Windows 11 on a PC.

# 3

**Inventory your compatibility.** Determine which devices in your network meet the minimum system requirements. Institutions will be able to move eligible PCs directly to Windows 11 using Windows Update for Business.

# 4

**Confirm with partners and check accessories.** Most software (including third-party ISV security solutions) and accessories that work with Windows 10 are expected to work with Windows 11. Check with your software publisher or accessory manufacturer for specific details on your products.

# 5

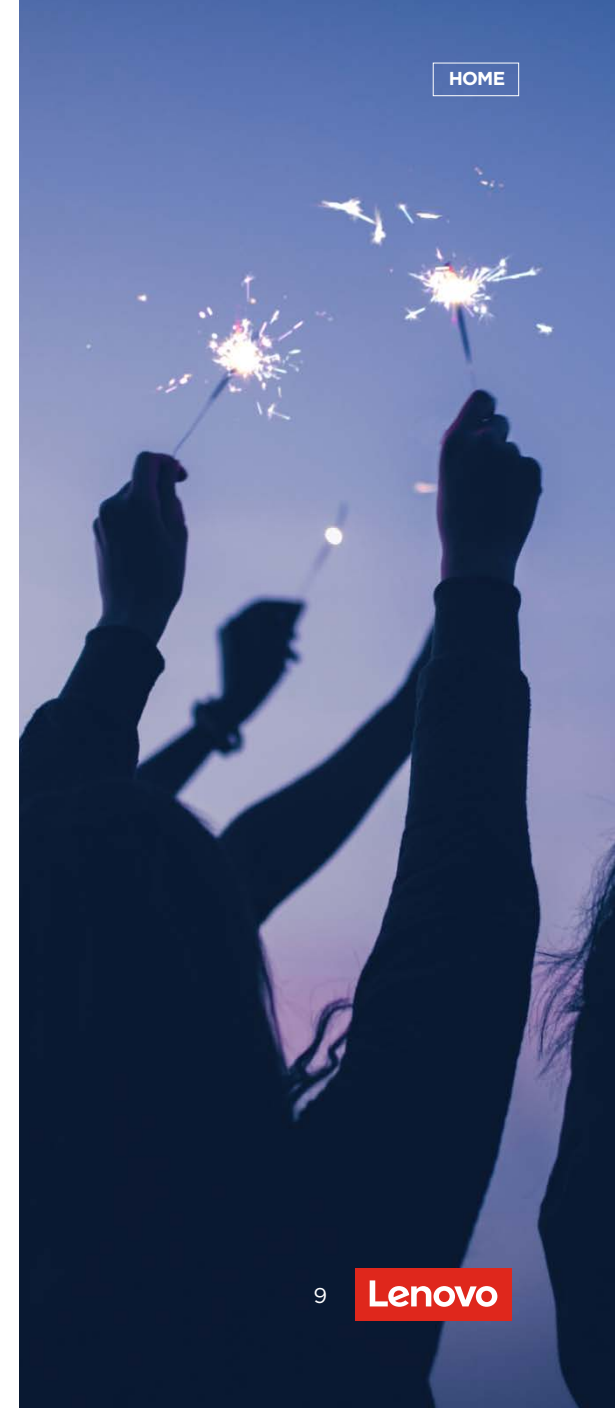
**Validate your applications.** App compatibility is a core design tenet of Windows 11. For peace of mind, use **Test Base for Microsoft 365** to test your applications in preview. If any compatibility issues arise, Microsoft App Assure will remediate them.

# 6

**Develop a rollout schedule.** Keep the Windows 10 support deadline top of mind so you don't risk running an unsupported OS. Start getting ready for Windows 11 as soon as you can and plan to complete your migration well before October 14, 2025. **Lenovo Asset Recovery Services** can help you realize potential value from your old technology assets, meet your institutional and environmental responsibilities, and comply with your internal security protocols.



Lenovo recommends  
Windows 11 Pro for Business.



# Common questions

### Are the Lenovo devices in my current inventory upgradable?

If your existing Lenovo PC is running the current version of Windows 10 and meets the minimum hardware specifications to run Windows 11, it will be able to upgrade. Specific timing will vary by device. Windows will send a notification once an eligible PC has been tested and validated for the free upgrade.

### Which Lenovo devices that I buy now will be upgradable to Windows 11?

Lenovo offers a wide selection of devices with Windows 11 pre-loaded or upgradable. Your Lenovo representative can help you confirm a particular device. Or refer to our [complete list](#) of compatible devices.

### What is an update versus an upgrade?

An update is a change within a version of a Windows product — for example, moving from Windows 10, version 2004 (the Windows 10 May 2020 update) to Windows 10, version 20H2 (the Windows 10 October 2020 update). An upgrade is when you change OS versions — for example, moving from Windows 10 to Windows 11, or when you upgrade to a higher edition within the same OS version (e.g., Windows 10 Home to Windows 10 Pro).

### What are the basics of the free upgrade offer for Windows 11?

The upgrade to Windows 11 is available for devices running Windows 10, version 20H1 or newer, on eligible hardware. Please view the [full minimum hardware requirements and specs](#).

## Retiring older equipment as you transition to Windows 11

With the end-of-support deadline for Windows 10 coming October 14, 2025, now is the perfect time to maximize your investment in older assets. [Lenovo Asset Recovery Services](#) lets you capture the remaining value of older devices — a single-source solution to responsibly dispose of them and get fair market value. Lenovo also offers a trade-in program to help with fleet refresh.



Lenovo recommends Windows 11 Pro for Business.



### Will my current Windows 10 applications, devices, and accessories work with Windows 11?

Most applications, devices, and accessories that worked with Windows 10 will be compatible with Windows 11. In fact, Windows 11 has 99.7% app compatibility.<sup>1</sup> Adobe Creative Suite and Autodesk are certified. Check with your software, device, or accessory manufacturer to confirm your applications are compatible.

### Will all my third-party Windows 11 security solutions continue to work across Windows 10 and Windows 11?

Check with your software publisher or accessory manufacturer to make sure you are on the current version that supports Windows 11.

### What edition of Windows 11 will I get when I upgrade?

This will depend on your Microsoft enterprise agreement. Consult your Microsoft representative to confirm the edition to expect.

### What is the upgrade path from Windows 10 to Windows 11? My institution still has some Windows 7 devices. If they meet the hardware floor, can these be upgraded directly to Windows 11?

Most devices available for purchase now will be upgradable to Windows 11. You will have the option to upgrade, clean install, or reimage Windows 10 devices to move to Windows 11. For Windows 7 devices that meet hardware requirements, you will need to clean install or reimage to go directly to Windows 11. Please view the [full minimum hardware requirements and specs](#).

### What is the activation and provisioning process for my remote users? Is it the same as Windows 10?

Windows 11 has been built on the same core as Windows 10, so you'll continue with the same experience you're accustomed to.

### I use Windows Autopilot to provision devices for end users. Will Windows Autopilot be available for Windows 11?

Yes, you will be able to use Windows Autopilot for Windows 11 devices.

### As an IT pro, can I manage or remove certain new features in Windows 11 that I may not want in my install base or to expose to my users?

Similar to previous versions of Windows, IT will have control over certain policies that will effectively manage or remove certain features. Windows 11 has been built on the same core as Windows 10, so you will continue with the same experience you're accustomed to.

### Can I run both Windows 11 and Windows 10 in parallel? If so, do I use the same process and tools to manage both?

Yes, Windows 11 is based on the same foundation as Windows 10, so they can coexist, and the same processes and tools are used to manage them. But migrating to Windows 11 by October 2025 is still crucial to avoid any gaps in security.

### Who do I contact if I have issues in upgrading to Windows 11 or general support questions?

Visit [Microsoft Support](#) and contact your Lenovo sales representative.



## Additional resources

### Microsoft support

[Hardware requirements and specs](#)  
[Windows 11 Pro information](#)  
[Windows 11 Enterprise information](#)  
[General upgrade support](#)  
[Windows 11 learning modules](#)  
[PC Health Check app for compatibility](#)

### Lenovo services and solutions

[Lenovo Managed Services](#)  
[Lenovo Asset Recovery Services](#)  
[Lenovo TruScale DaaS](#)  
[Lenovo Premier Support](#)



Lenovo recommends  
Windows 11 Pro for Business.

# Get ready for Windows 11 with Lenovo

Lenovo solutions help keep your institution efficient and productive whether students and educators are on or off campus. Partner with us for insight, guidance, and services to make your Windows 11 migration simple and successful.

**Learn more** and get started today.

- Sources**
- 1 Forrester, "The Total Economic Impact™ of Windows 11 Pro Devices," December 2022
  - 2 Checkpoint, "Cyber Attack Trends: 2022 Mid-Year Report," 2022
  - 3 IBM Security, "Cost of a Data Breach Report," 2023
  - 4 Techaisle, "SMB Windows 11 Survey Report," February 2022

\* Active Directory and internet connection required.  
\*\* Azure Virtual Desktop license required.  
\*\*\* Microsoft 365 required.



Lenovo recommends Windows 11 Pro for Business.



Smarter technology for all

