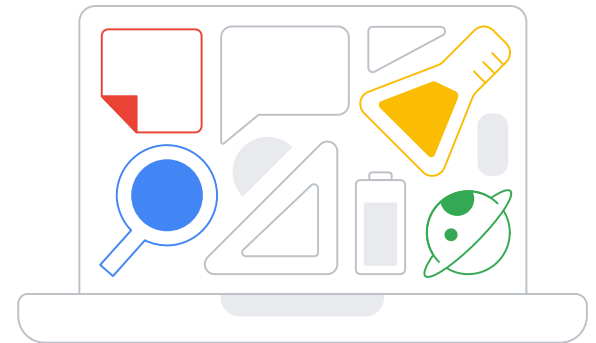


Choose the right Chromebook for your school.



Choose your device in 4 simple steps:

1

Identify how the device will be used.

2

Map out the device specifications required.

3

Make recommendations for devices that meet these needs.

4

Compare your options to find the right one for your school.

Last updated: Sept 2024

NOTE: Placement of devices within use case categories will be evaluated and updated bi-annually. Some configurations may only be available in select markets. Please contact your Channel or OEM representative regarding the availability of specific devices and configurations.

Device categories



Learning anywhere

Classroom and distance learning devices

Great for learning inside and outside the classroom, these devices support multiple browser tabs & Google Workspace concurrently, plus video conferencing. With the Google for Education App Hub you'll find the latest & most useful education app integrations to enrich learning.

Recommended software / apps

Productivity: [Google Workspace for Education](#) tools like Docs, Slides, and Sheets

VC/Comms: [Google Meet](#) / [Classroom](#), [Zoom](#)

Accessibility: [Built-in features](#) like ChromeVox, reading mode, closed captions and more

Creativity: Adobe Express, Figma, and more on [Google for Education App Hub](#)

Minimum system requirements

RAM: 4GB

CPU:

- **Intel:** 4500 / 5000 / 5100 / 6000 / N100 / N200 / U300
- **AMD:** 3015Ce / Athlon Silver / Athlon Gold
- **MediaTek Kompanio:** 500, 820, 828, 520, 528, 1200
- **Qualcomm:** 7c+ Gen 1,2,3

Advanced Workload

Teachers, staff, higher education, high school devices

Recommended for heavy workloads including content creation/editing, coding, and running apps in virtualized environments. Supports heavy multitasking (e.g., large video calls, multiple browser tabs, Google Workspace, and external monitors/displays).

Chromebook Plus devices fall under Advanced Workload.

Recommended software / apps

Productivity: [Google Workspace for Education](#)

VC/Comms: [Google Meet](#) / [Classroom](#), [Zoom](#), and more

Accessibility: built-in [accessibility features](#)

Creativity: Adobe Express, Figma, and more on [Google for Education App Hub](#)

VDI: Cameyo, Citrix, Itopia, Parallels, VMware

Coding: Linux

Print: Papercut, Canon, HP Print, PrinterLogic, Ricoh

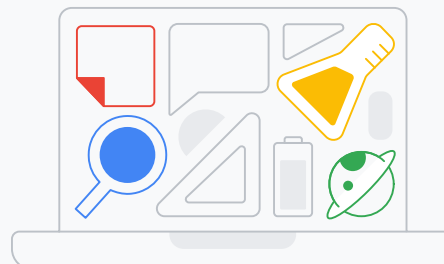
Minimum system requirements

RAM: 8GB

CPU:

- **Intel:** i3 N305, i3, i5, i7
- **AMD:** Ryzen 3, 5, 7
- **MediaTek Kompanio:** 1380

Devices marked for Advanced Workload will be able to handle all the listed workloads in the Learning Anywhere segment. However, Learning Anywhere devices may not be able to optimally support Advanced Workloads.

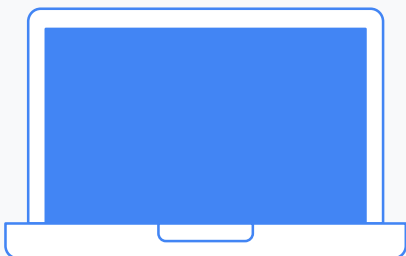


Chromebook Plus: Made for teachers and staff

Expanding the possibilities of education.

With features powered by AI for enhanced video conferencing, reading, and writing capabilities, Chromebook Plus helps teachers push the boundaries of learning whether they are working inside or outside the classroom.

Featuring the best-in-class security and simple management that IT leaders love, coupled with the power, speed, memory, and storage that teachers need.



Features that were designed for ease and security for teachers



Get the most out of Google AI

No matter the task, teachers can do everything they need throughout the school day on a device that's powerful enough to run advanced AI models and has Google AI technology built in.



Oversee access to features

Worry less knowing all Gen AI features come with admin controls, so admins make decisions about what their teachers can access.



Making the full fleet simple to manage and scale

Adopting Chromebook Plus for teachers means the simple central management and deployment features used for student Chromebooks can extend to the full fleet – saving IT staff even more time.

More options to manage devices

Chrome Education Upgrade

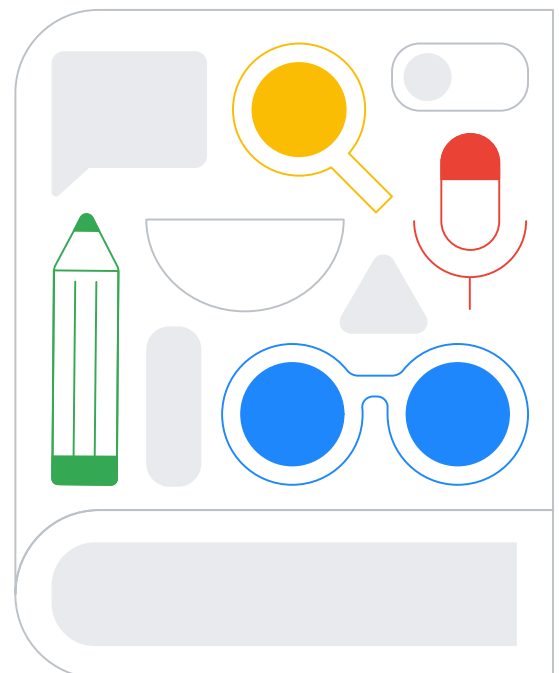
Supercharge deployment and onboarding for ChromeOS fleets with Chrome Education Upgrade. By adding Chrome Education Upgrade to each Chromebook, IT teams are equipped with more powerful controls to supercharge deployment and onboarding, set device usage and access settings, and streamline ongoing management.

NEW!

Endpoint Education Upgrade

You can use Endpoint Education Upgrade to manage and secure your school's phones and tablets. This add-on bundles advanced admin and security controls included in Education Standard and Education Plus across phones and tablets.

[Learn more](#)



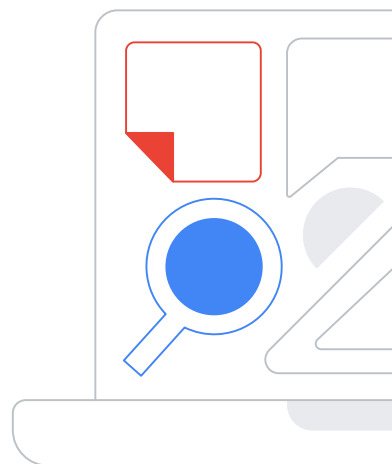
Finding the right Chromebook

User Profile & Features

The below table maps Learning Anywhere and Advanced Use wayfinding segments to user profiles. Also listed are the form factors and features that would provide an ideal experience for each user profile. These are recommendations, not requirements.

The following pages list devices by manufacturer. This information will help you find the right device with the specs required to suit the users' needs

To learn more, visit [Find your device](#).



User Profiles	Learning anywhere	Advanced Workload
	Intro to digital collaboration	Powerful computing for heavy workloads
	Grade 1-8 10-12" Touch-enabled Clamshell, Tablets (Detachable), Ruggedized	Grade 6-12 11-15" Touch-enabled Clamshell, Convertibles, Light and Ruggedized Preferred Features: Garaged stylus, Dual cameras, 16:10 or 3:2 Recommended SKUs: 8GB RAM, 64GB+ Storage
		Teachers/Staff/Higher Education 13-16" Convertibles, Thin & Light Preferred Features: Garaged stylus, Fingerprint sensor, FHD+ Display, 1080p+ camera Min. SKUs: 8GB RAM, 128GB+ Storage



Automatic updates

Chromebooks released from 2021 onwards will automatically get 10 years of updates. Chromebooks released before 2021 and already in use, users and IT admins will have the option to extend automatic updates. [Learn more](#)



Connected devices

Devices with WiFi 6/LTE/5G SKUs have been color coded on the following pages.



Zero-touch enrollment

For the most updated list of devices enabled for zero-touch enrollment, reference [here](#).



Supported peripherals

[Works With Chromebook](#) is peripherals certification program ensuring compatibility across all makes of Chromebook devices. Categories include headsets, webcams, mics, external storage, and more.



Streamline with ChromeOS

Simple management and advanced security IT leaders are used to — for the entire school, managed from one console. From interactive lessons to troubleshooting, help teachers stay on the same page as students with everyone on Chromebooks.

	Devices that have WiFi 6 enabled SKUs	Devices that have a cellular SKU	Stylus compatible G = Garaged stylus included
<div> Learning anywhere </div>			
100e 2nd Gen MTK 2 [Kompanio 500, 4GB] Clamshell, 11.6" screen			
100e 3rd Gen [3015Ce, N4500, 4GB] Clamshell, 11.6" screen			
100e 4th Gen [Kompanio 520, 4] Clamshell, 11.6" touchscreen (optional)			
100e 4th Gen (Intel) [N100/N200, 4/8GB] Clamshell, 11.6"			
300e 3rd Gen [3015Ce, 4GB] Convertible, 11.6" touchscreen			G
300e 4th Gen [Kompanio 520, 8GB] Convertible, 11.6" touchscreen			G
500e 3rd Gen [N5100/6000, 4/8GB] Convertible, 11.6" touchscreen			G
500e 4th Gen [N100/200, 4/8GB] Convertible, 12.2" touchscreen			G
S380-14 [Kompanio 520, 8GB] Clamshell, 14" screen			
Flex 5i [i3, 4GB] [Celeron, 4GB] Convertible, 14" touchscreen			
Chromebox Mini [N4500, 4GB] Chromebox			
Duet [Kompanio 500, 4GB] Detachable, 11" touchscreen			G
14e Chromebook Gen 2 [3015Ce, 4/8GB] Clamshell, 14" touchscreen (optional)			
14e Chromebook Gen 3 [Celeron, Pentium, 4/8GB] Clamshell, 14" touchscreen (optional)			
Flex 5i [i3/Pentium, 4GB] Convertible, 14" touchscreen			G
ThinkCentre M60q Chromebox [Celeron, 4GB] Mini PC			
Chromebook Duet EDU G2 [MediaTek Kompanio 838, 8GB] 11" detachable touchscreen			G
Advanced Workload			
14e Chromebook Gen 3 [i3 N305, 8GB] Clamshell, 14" touchscreen (optional)			
Flex 5i Chromebook [i3, 8GB] Convertible, 14" touchscreen			
ThinkCentre M60q Chromebox [i3/5, 8/16GB] Mini PC			G