

Lenovo ThinkStation

Lenovo ThinkStation PX
The Pinnacle of Lenovo Technology

Lenovo



The pinnacle of Lenovo technology, the ThinkStation PX goes beyond the limits of desktop performance to enable even the most extreme workflows. Featuring a thermally advanced, rack-optimized chassis co-designed with Aston Martin, the latest dual 4th Gen Intel® Xeon® Scalable processors, up to 120 cores, and support for up to four NVIDIA RTX™ 6000 Ada Generation GPUs, this workstation powerhouse runs the most complex computing workloads seamlessly—whether desk-side or in a data center.

Processor:

**Dual CPUs
120 Cores**

4th Gen Intel Xeon Scalable processors

Graphics:

**4 NVIDIA RTX
6000 Ada**

Each with 48GB VRAM*

ECC Memory:

**2TB
DDR5**

16 DIMM Slots

Internal Storage:

60TB

Up to 9 Total Drives¹

Features



Chassis Co-Designed with Aston Martin

Form and function in an iconic chassis with an advanced thermal architecture



Dual Redundant Power Supplies

Offering system stability when running mission-critical applications



Front Access Drives

Tool-less serviceability with innovative modular design



Rack Optimized

For ultimate desktop to data center flexibility

Lenovo ThinkStation PX Product Specifications[^]

Performance

Processor

Dual 4th Gen Intel® Xeon® Scalable processors (up to 120 cores, 60 cores per CPU, up to 4.1GHz)

Chipset

Intel C741

Graphics

Up to 4 NVIDIA RTX™ 6000 Ada* 48GB VRAM

Total Memory

Up to 2TB DDR5 4800MHz²

Memory DIMM Capacity

16GB / 32GB / 64GB / 128GB ECC

16 DIMM Slots

Storage Type Capacity

M.2 PCIe NVMe SSD up to 4TB

3.5" SATA HDD up to 12TB

Total Storage^{3, ^}

Up to 9 total drives

Max M.2 = 7 (28TB)

Max 3.5" = 2 (24TB)

or

Up to 7 total drives

Max M.2 = 3 (12TB)

Max 3.5" = 4 (48TB)

RAID

M.2 = 0/1/10/5

SATA = 0/1/10/5

Power Supply[^]

1850W (92% efficient)

Optional redundant power supplies⁴

Rear power button

Design

Dimensions (WxDxH)

(mm): 220 x 575 x 435

(inches): 8.7 x 22.6 x 17.1

Weight

Up to 38kg (83.8lbs)

Connectivity

Optional Front Ports

(2) USB-A 3.2 Gen 2 (10Gbps)**

(2) USB-C® 3.2 Gen 2 (10Gbps)**

Optional Front Removable Storage

(3) Front Accessible Storage Enclosure⁷

Rear Ports

(2) USB 2.0**

(4) USB-A 3.2 Gen 1 (5Gbps)**

(1) USB-C 3.2 Gen 2x2 (20Gbps)**

(1) RJ-45 Gigabit Ethernet

(1) RJ-45 10 Gigabit Ethernet

(1) Line in

(1) Line out

Optional Rear Ports

(1) Serial

WLAN

Intel AX210 AC Wi-Fi 6E 2x2 + Bluetooth™ 5.2, Intel vPro^{5,6}

Internal Wi-Fi Antennas⁶

Expansion Slots

Dual Processor Systems:

(4) PCIe 5.0 x16

(4) PCIe 4.0 x16

(1) PCIe 4.0 x8

Single Processor Systems:

(2) PCIe 5.0 x16

(2) PCIe 4.0 x16

Expansion Options⁶

PS/2

USB-C

LAN

Smarter
technology
for all

Lenovo

1 Depending on drive configuration

2 4800MHz max speed; available depending on configuration

3 Any combination of storage to equal maximum storage drives; additional hardware may be required

4 Configuration dependent; up to 2350W with dual PSU

5 Bluetooth 5.2 is hardware ready but may run at a lower version due to OS limitation

6 Optional, additional hardware may be required

7 Up to 4 M.2 PCIe NVMe SSD and 1 SATA 3.5" HDD or Up to 2 M.2 PCIe NVMe SSD and 2 SATA 3.5" HDD

[^] For a full list of configuration details, specifications, and any limitations please visit: <https://psref.lenovo.com>

* NVIDIA RTX Ada Graphics Available Summer 2023

** USB port transfer speeds are approximate and depend on many factors, such as processing capability of host/peripheral devices, file attributes, system configuration and operating environments; actual speeds will vary and may be less than expected.

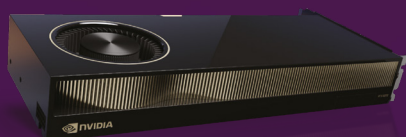
Lenovo Options & Accessories



ThinkVision P27u-20 27" 4K UHD Monitor



2TB Performance PCIe Gen4 NVMe OPAL2 M.2 2280 SSD



NVIDIA RTX™ 6000 Ada Graphics Card



Lenovo Professional Wireless Rechargeable Combo Keyboard and Mouse

For a full list of accessories and options, please visit: accsmartfind.lenovo.com

For more details on ThinkStation and ThinkPad, please visit: lenovo.com/thinkworkstations

Visit us on social media: [#lenovoworkstations](https://twitter.com/lenovoworkstations)



March 2023 ©Lenovo. All rights reserved. Lenovo is not responsible for photographic or typographic errors. Lenovo makes no representation or warranty regarding third-party products or services. LENOVO, ThinkStation, and ThinkPad are trademarks of Lenovo.

Lenovo ThinkStation PX General Specifications[^]

Software

Operating System

Preloaded:

Windows 11 Pro for Workstation

Windows 10 Pro for Workstation (pre-installed through downgrade rights in Windows 11 Pro)

Ubuntu® Linux^{®1}

Supported:

Windows 10 Enterprise Edition

Red Hat® Enterprise Linux* (certified)

Windows Preloads

Lenovo Commercial Vantage

ISV Certifications²

Including AVID®, Altair®, Autodesk®, ANSYS®, Bentley®, Dassault®, Nemetschek®, PTC®, Siemens®

For a complete list of ISV certifications visit <http://www.thinkworkstations.com/isv-certifications/>

Security

ThinkShield

TPM 2.0

Self-healing BIOS

Power On Password

UEFI Secure Boot

Kensington Lock Slot

Sustainability

Certifications

ENERGY STAR^{®2}

EPEAT^{®3} Gold

RoHS Compliant

TCO 9.0

80 Plus Platinum power supply

Recommended Services

Lenovo offers a comprehensive portfolio of services to support and protect your ThinkStation investment—so you can focus on your business, not your IT.

Premier Support

Bypass phone menus and scripted troubleshooting to access advanced-level technicians with the expertise needed to quickly diagnose and solve problems.

Warranty Extensions

(1 to 5 years total duration)

This fixed-term, fixed-cost service helps you accurately budget for PC expenses, protect your valuable investment, and potentially lower the cost of ownership over time.

Warranty Upgrades—

Onsite and Next Business Day

Maximizes PC uptime and productivity by providing convenient, fast repair service the next business day.

1 Select Versions Available Via Preload

2 Certification Available on Select Models

3 Certification Available on Select Models; EPEAT registered where applicable. EPEAT registration varies by country. See www.epeat.net for registration status by country

[^] For a full list of configuration details please visit: <https://psref.lenovo.com>

Lenovo



NVIDIA and NVIDIA RTX are trademarks and/or registered trademarks of NVIDIA Corporation in the U.S. and other countries. Intel and Xeon are trademarks of Intel Corporation or its subsidiaries. Linux is the registered trademark of Linus Torvalds in the U.S. and other countries. Ubuntu is a registered trademark of Canonical Ltd. Microsoft and Windows are registered trademarks of Microsoft Corporation. Other company, product, and service names may be trademarks or service marks of others.