



Smarter
technology
for all

Lenovo

Lenovo ThinkSmart Core Gen 2

Upgrade your meeting spaces to the latest innovations in Microsoft Teams Rooms with Lenovo ThinkSmart Core Gen 2, the first AI-optimized compute device purpose-built for video conferencing room systems, powered by the Intel® Core™ Ultra processor and Intel vPro® platform. Keep work flowing from your desk to team collaboration with AI-enabled features and Copilot. Once the meeting is over, productivity continues without a pause, thanks to Intelligent Recap, AI-driven follow-up questions, and auto-populated action items.

Start with ThinkSmart Core Gen 2 + Controller as your technology foundation for outfitting rooms that support the latest innovations from Microsoft Teams Room or toggle to BYOD mode and run any meeting from your laptop for true UC flexibility.

For a complete room solution right out of the box, ThinkSmart Core Gen 2 Full Room Kit is a single-SKU option that adds the intelligent ThinkSmart Bar 180, enabling Microsoft Teams IntelliFrame. Installation and deployment are a snap, and ample ports allow for quick and easy connection to different devices. No matter what configuration you create, every collaboration is secure, thanks to advanced hardware-based protection of the Intel vPro® platform and automatic Windows 11 security updates.

 Certified for
Microsoft Teams

 **Windows 11**



Lenovo ThinkSmart Core Gen 2



INTENTIONAL DESIGN

ThinkSmart Core Gen 2 is engineered to be set up and left alone, regardless of the environment, with an IoT-embedded processor for reliability and longevity. The versatile built-in cable management system locks wires in place or detaches completely for a sleeker, more compact setup, and an integrated EDID management facilitates improved connectivity with room displays. ThinkSmart Core Gen 2 is tested to run 24/7/365 in a wide temperature range (5°C to 40°C), withstanding a crowded server room, and boasts a quiet fanless enclosure to go unnoticed behind a conference room display.



INTELLIGENT POWER

Powered by the Intel® Core™ Ultra processor with an integrated NPU, the ThinkSmart Core Gen 2 efficiently manages heavy AI workloads with up to 40% lower power consumption¹. The unique NPU architecture accelerates compute tasks and data transfer, optimizing AI performance and making operations more efficient.



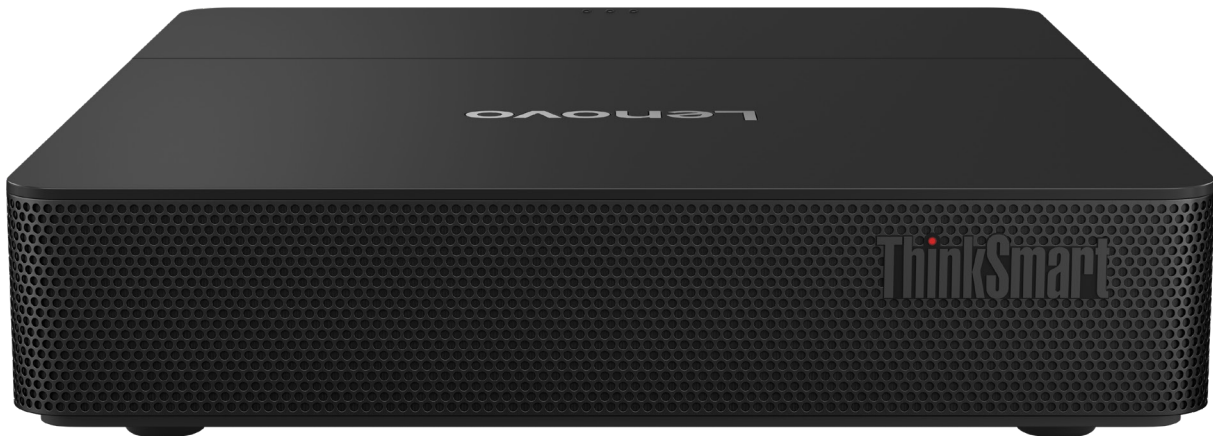
INHERENT FLEXIBILITY

With Windows 11 IoT, ThinkSmart Core Gen 2 offers the flexibility to choose from a variety of Teams Rooms-certified peripherals. To make installation easier, it comes with either the Lenovo IP Controller or the ThinkSmart Controller to suit a variety of room setups. It also supports BYOD mode, allowing users to run any meeting from their laptop no matter the UC platform. Want a one-box solution for easy deployment? Get ThinkSmart Core Gen 2 Full Room Kit, which adds the intelligent ThinkSmart Bar 180 for a single-SKU deployment option.



INCLUSIVE PRODUCTIVITY

The ThinkSmart Core Gen 2 is certified for Microsoft Teams Rooms and powered by Windows 11 IoT, providing participants with a first-class meeting experience through Copilot and AI features like IntelliFrame and intelligent speaker recognition. IntelliFrame automatically focuses and frames individuals and dynamically adjusts to create a more natural interaction, while intelligent speaker recognizes each person by their voice to dictate meeting notes for actionable recap.



Lenovo

¹ As measured by the power consumed by Intel® Core™ Ultra 7 165H vs. prior gen. See www.intel.com/PerformanceIndex for details. Results may vary.

Lenovo ThinkSmart Core Gen 2

Lenovo ThinkSmart Bar 180



Enhance your Microsoft Teams Rooms meetings with the modern, intelligent ThinkSmart Bar 180, which supports Intelligent Speaker functionalities for Microsoft Copilot. Its unique 180° field of view ensures everyone is seen, while advanced audio feature with noise cancellation and echo reduction use zero-vibration technology to provide crystal-clear sound. Edge AI-enabled cameras and precision voice detection automatically frame participants, zooming in on speakers for more natural interactions. Real-time whiteboard streaming boosts collaboration, making remote participants feel involved. With four powerful speakers, the ThinkSmart Bar 180 delivers rich, high-definition sound, adapting seamlessly to any space.

ThinkSmart or Lenovo IP Controller



ThinkSmart Controller

Lenovo IP Controller

Choose either the ThinkSmart Controller or Lenovo IP Controller, both with intuitive 10.1-inch, 10-point touch display and the familiar Microsoft Teams Rooms interface. Experience easy meeting control, content sharing, and clear communication on the anti-glare, anti-smudge screen. The Lenovo IP Controller addresses the growing demand for HDMI on table with no lag, as well as PoE connectivity.

**38% PPC
RECYCLED MATERIAL**
on ThinkSmart Core Gen 2 with
cable management system.

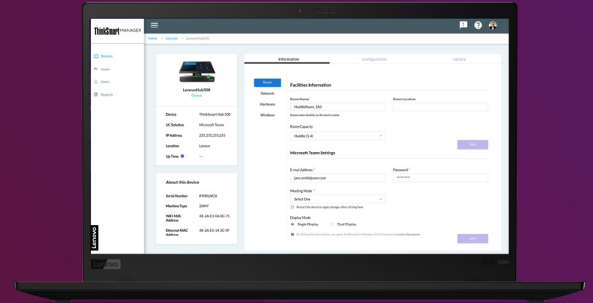


**100% OF LENOVO
THINKSMART PRODUCTS**
will incorporate PCC recycled
materials by 2025.

Lenovo ThinkSmart Manager¹

By leveraging the remote management capabilities of Intel® vPro® combined with Intel® Active Management Technology (Intel® AMT), this proprietary console provides your IT team with the ability to deploy, monitor, and troubleshoot Lenovo ThinkSmart devices from a single interface, regardless of the state or location of the devices.

- Includes one year of Lenovo ThinkSmart Manager Premium
- Leverage a single console to remotely deploy, manage, configure, update, and resolve issues
- See real-time status by device and receive live at-a-glance issues lists
- Perform bulk configuration and bulk restarts
- Generate reports to keep tabs on device issues and trends
- Take advantage of elevated security options



Smart Collaboration Professional Services



DEPLOY

Included for the first three years, Lenovo ensures your ThinkSmart devices function optimally through virtual deployment installation and integration support.



MAINTAIN

Included for the first three years, we follow up with remote check-ins and assist with ongoing security updates to take the stress out of device maintenance.



ASSESS²

Lenovo is here to help identify any issues that could sidetrack your deployment by providing a detailed assessment of potential red flags and a follow-up report.



TRAIN²

Lenovo helps instruct all your audiences—IT and AV support teams, end users, and executives—on how to fully take advantage of your new technology.



DESIGN²

Lenovo evaluates and categorizes your meeting spaces by infrastructure and experience needs to design a “room standard” that includes hardware, software, and service recommendations.



ONSITE²

Lenovo provides white glove treatment through a dedicated, onsite specialist who can perform any of the above services, including complete physical setup, installation, configuration, and device troubleshooting.



¹ Lenovo ThinkSmart Manager comes pre-loaded on all Lenovo ThinkSmart Core Gen 2 devices. Lenovo ThinkSmart Manager has two levels: Basic and Premium. Premium is included with your Lenovo ThinkSmart Core Gen 2 purchase for one year. You can choose to continue service for an additional cost.

² Optional

Lenovo ThinkSmart Core Gen 2

Security at every layer



PROACTIVE MONITORING

- Immediate notifications to fix critical issues before they're problematic
- Real-time status views by device
- Generates reports on device issues and trends
- Monitors device usage, security posture, and hardware/software inventory



BETTER PROTECTION

- Prevention against unwanted USB port use
- Central management of passwords for BIOS, Windows, and Microsoft Teams accounts
- Work-from-anywhere solutions and partnerships with world-class independent software security vendors
- Embedded security directly in the firmware
- ThinkShield adds an extra layer of security through its OS-to-cloud solutions



REMOTE CONTROL

- Single console with ThinkSmart Manager to remotely deploy, configure, and update devices
- "Apply all" to streamline actions across multiple endpoints
- Bulk restart rules
- Always-on security with Absolute's Persistence technology
- Enable/disable with Windows remote desktop and Intel vPro® remote terminal with Intel® Active Management Technology (Intel® AMT)

Lenovo ThinkSmart Core Gen 2

Product specifications



Lenovo ThinkSmart Core Gen 2

performance

PROCESSOR (TWO OPTIONS)

Intel® Core™ Ultra 7 165H processor on Intel vPro® platform
Intel® Core™ Ultra 5 135H processor on Intel vPro® platform

OPERATING SYSTEM

Windows 11 IoT Enterprise GAC

MEMORY

16GB (Dual-Channel) DDR5 5600MHz SODIMM
32GB (Dual-Channel) DDR5 5600MHz SODIMM

STORAGE

256GB PCIe TLC SSD

GRAPHICS

Intel® Arc™ graphics

security

TPM 2.0
Kensington™ MiniSaver lock slot
Removable Cable Management

connectivity

1x HDMI Ingest
2x HDMI-Out
1x RJ45 Gigabit Ethernet
3x USB-A 3.2 Gen 1
1x USB-A 2.0
1x USB-C 3.2 Gen 2
1x USB-C 3.2 Gen 2
1x USB-C Ingest
1x Standard Think Power

WIFI

WLAN 802.11 AC (2x2)
Bluetooth® Low Energy (LE) 5.0

design

DIMENSIONS (W X D X H)

185 x 220 x 38 mm / 7.28 x 8.66 x 1.50 in (with cable management)
185 x 140 x 38 mm / 7.28 x 5.51 x 1.50 in (without cable management)

WEIGHT

1.01 kg / 2.23 lbs (with cable management)
0.86 kg / 1.90 lbs (without cable management)

manageability

ThinkSmart Manager

warranty

3-year Premier Support

ThinkSmart-Start

3-year Deploy
3-year Maintain
1-year ThinkSmart Manager Premium

Controller

PORTS

Lenovo ThinkSmart Controller
1x USB-C 2.0
1x 3.5mm headphone

Lenovo IP Controller

PoE
HDMI (in)

DISPLAY

10.1" 10-point touch
30° and 60° rotatable
Antiglare, anti-fingerprint

RESOLUTION

1280 x 800 (<340nits)
16:10 aspect ratio

SECURITY

Kensington™ MiniSaver Lock Slot

Lenovo ThinkSmart Bar 180

CAMERAS

3

FOV

180° horizontal, 54° vertical

ASPECT RATIO

3840 x 1080 (16:10)

RESOLUTION SUPPORTED

13 megapixels
Panoramic 4K
30fps

ZOOM

6x lossless digital zoom
Intelligent Zoom

AUDIO

2x speakers, 2x tweeters
Sterio audio out
Speaker frequency range: 80Hz-20kHz

MICROPHONES

8x beamforming array microphones
Sensitivity: -37dBFS
Microphone frequency range 100-8kHz

PORTS

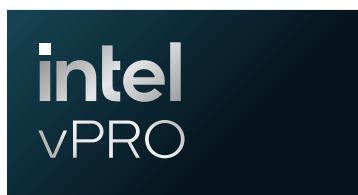
AC
Audio Jack
USB-C Supports 2.0 and 3.0
Ethernet (RJ45)
Bluetooth® v5.0

DIMENSIONS (W X H X D)

650 x 80 x 125 mm / 25.6 x 3.1 x 4.9 in

WEIGHT

2200g / 77.6 oz



©2024 Lenovo. All rights reserved. These products are available while supplies last. Prices shown are subject to change without notice. For any questions concerning price, please contact your Lenovo Account Executive. Lenovo is not responsible for photographic or typographic errors. Warranty: For a copy of applicable warranties, write to: Warranty Information, 500 Park Offices Drive, RTP, NC 27709, Attn: Dept. ZPYA/B600. Lenovo makes no representation or warranty regarding third-party products or services. Trademarks: Lenovo, the Lenovo logo, Rescue and Recovery, ThinkPad, ThinkCentre, ThinkStation, ThinkVantage, and ThinkVision are trademarks or registered trademarks of Lenovo. Microsoft, Windows, and Vista are registered trademarks of Microsoft Corporation. Intel, the Intel logo, Intel Inside, Intel Core, and Core Inside are trademarks of Intel Corporation in the U.S. and/or other countries. All other trademarks are the property of their respective owners.

Lenovo