

# Smarter AI for All

The complete AI Portfolio  
for Higher Education

**AMD**   
together we advance\_AI



Smarter  
technology  
for all

Lenovo

# Contents

The future of AI in Higher Education	3
ThinkShield and AMD PRO Security	7
With great power comes great responsibility	8
AI's wide impact on Education	9
AI in Action	11
Higher Education does better with Hybrid AI	12
The Lenovo AI portfolio	13
The pace of change	15
Delivering intelligent sustainability	17
Next steps	18





# The future of AI in Higher Education

AI is transforming Higher Education, creating new ways to enhance learning experiences, improve campus operations, and support students, faculty, and staff.

Like the revolutionary impact of the Internet and smartphones, AI technology—especially generative AI—is reshaping how educational institutions operate and serve their communities.

Together, Lenovo and AMD are helping educational institutions harness AI's potential across every aspect of campus life. Our solutions enhance student learning experiences, accelerate research, and even strengthen campus security.

By integrating AI-embedded processing power with smart devices and robust infrastructure, we're helping institutions maximize their worth—not just for students, faculty, and staff, but for their budgets too.





## AI in Higher Education today

It's no exaggeration to say that most students now use AI tools to help them write academically, or that many faculty use it to prepare lectures and personalize learning.

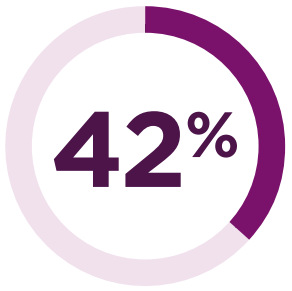
It's also worth noting that significant time and cost savings are being made by faculty and staff, as they use AI to streamline administrative processes.

This can include easing compliance with regulations like the Family Educational Rights and Privacy Act (FERPA) and the General Data Protection Regulation (GDPR).

**92%**

**of students  
now using AI  
in some form,  
up from 66%  
in 2024<sup>1</sup>**

## The biggest benefit for Educators using AI



say saving time on  
administrative tasks.



say personalized  
learning experiences.



say improved student  
engagement.<sup>2</sup>



## What makes for successful implementation?

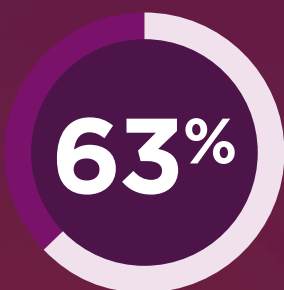
Success starts with a strategy to identify valuable use cases, avoid purposeless adoption, and scale successful pilots within budget.

Lenovo can help you every step of way, to help you overcome the technical barriers around data management complexity, hardware limitations, and legacy system integration.

Also, as security and compliance demands intensify with AI adoption, our solutions can strengthen your cybersecurity and adherence to data protection regulations.

Infrastructure needs complete the challenge, to ensure reliable system performance across the entire campus.

Together, Lenovo and AMD provide the depth and capability you need.



of education organizations  
**AI partner, rather than  
supplier, was best for  
successful AI implementation.**<sup>3</sup>



## AI grounded in security

AI solutions must be built on a foundation of strong governance and robust security measures to be responsible, ethical, and trustworthy.

Lenovo's security-by-design approach establishes this foundation, ensuring AI solutions are secure through our Supply Chain Assurance capabilities. AMD PRO processors also feature multilayered security at the hardware, OS, and system level, ready to help defend against sophisticated attacks.

Our commitment to AI security is reinforced by our Global Security Organization, the appointment of our Chief Security & Artificial Intelligence Officer (CSAIO), and our participation in initiatives such as the Joint Cyber Defense Collaborative.





# ThinkShield and AMD PRO Security

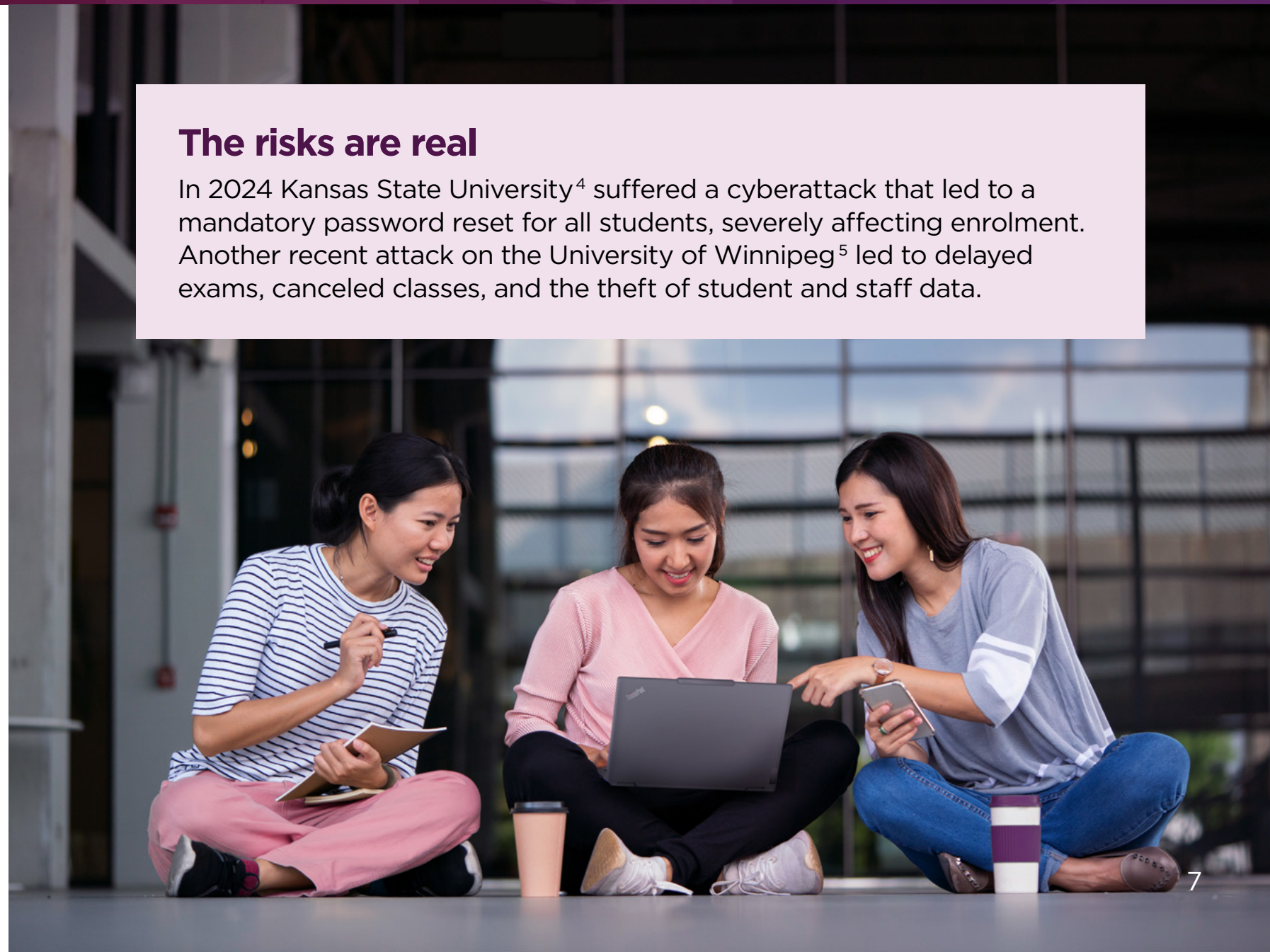
All Lenovo AMD Ryzen™ PRO processors devices feature ThinkShield + AMD PRO Security, providing multilayers of protection from the component level to the cloud.

## This approach includes:

- **ThinkShield's Security by Design**, securing the supply chain and providing Platform Security features standard on Think® devices.
- **AMD Modern Security Architecture** to withstand the current threat landscape.
- **AMD Secure Processor** that validates code before it's executed.
- **AMD Memory Guard**, the industry's first full memory encryption.
- **Windows 11 Pro** provides built-in-virtualization-based security, secure boot, and kernel isolation—ensuring endpoint resilience against advanced threat.
- **Self-healing BIOS** for endpoint protection.
- **Advanced AI** endpoint protection against malware and ransomware.
- **Tamper switch protection** against unauthorized physical access.

## The risks are real

In 2024 Kansas State University<sup>4</sup> suffered a cyberattack that led to a mandatory password reset for all students, severely affecting enrolment. Another recent attack on the University of Winnipeg<sup>5</sup> led to delayed exams, canceled classes, and the theft of student and staff data.





# With great power comes great responsibility

The Lenovo Responsible AI committee makes sure our solutions are legal, ethical, fair, privacy-preserving, secure, and explainable.

The six pillars of Responsible AI at Lenovo are:

1. People & Culture
2. Privacy & Security
3. Accountability & Reliability
4. Explainability
5. Transparency
6. Environmental & Social Impact

**26K+**

educational  
organizations  
trust Lenovo

**4**

AI Innovation  
Centers

**18**

R&D locations

**100s**

of AI partners





# AI's wide impact on Education

Take a deeper look into how AI is being used in Higher Education.



## **Personalized learning:**

Personalize educational content to individual students' needs, enhancing their learning experience.



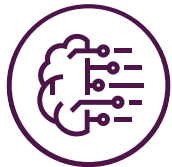
## **Safety and security:**

Advanced AI and machine learning to identify and stop malicious attacks before they can cause damage.



## **Virtual assistants:**

Provide 24/7 support to students, assisting with queries and helping them navigate the learning management system.



## **Research capabilities:**

Accelerate data analysis, enabling researchers to derive insights from large datasets, quickly.



## **Digital signage:**

Enhance communication on campus by displaying real-time information, event updates, and emergency alerts.



## **Esports programs:**

Utilize AI to optimize team performance, game strategies, and player development in emerging esports curriculums.



## **Administrative automation:**

Streamline operations, including admissions, scheduling, and financial aid processes.



## **Immersive learning:**

Power dynamic, learning experiences using VR and AR to make education more engaging and interactive.



## **Student engagement:**

Support students' academics and wellbeing, and alert when students are struggling and need intervention.



60%

of educators have  
**integrated AI**  
into their daily teaching.<sup>6</sup>

73%

of students say they  
expect to **use AI**  
once they graduate.<sup>7</sup>

80%

**accuracy rate by AI**  
in predicting students' final  
grades for early intervention.<sup>8</sup>





# AI in Action

Here are just a few examples of how education organizations are harnessing the power of Smarter AI for All.

**Driving research excellence**

“The Higgs cluster will include cutting-edge Lenovo HPC hardware powered by AMD EPYC processors, to deal with advanced workloads at high speeds, such as the complex calculations, simulations, and modelling carried out by research teams ... an exciting time in our journey as a research-intensive university.”

**Dr Simon Corbett** - Chief Information Officer, Northumbria University

**Safe and cost-effective upgrade**

“Thanks to Lenovo and AMD, we have the stable, secure infrastructure and easy access to support that we need to reassure users that their data is in safe hands. We’ve compared the cost of our HPC cluster to services from the big cloud hosting providers and there is no comparison-our approach is far more cost-effective.”

**Dr. Ivar Koppel** - CEO, HPC Center, University of Tartu

**Accelerating cutting-edge research**

“Our ability to plug advanced computing equipment into a professionally managed HPC environment has allowed research groups to secure R&D funding for Wales. These include facilities for AI, big data, microbial bioinformatics, and dementia research.”

**Professor Martyn Guest** - Technical Director, Supercomputing Wales






# Higher Education does better with Hybrid AI

By combining on-premises and cloud-based processing, Lenovo and AMD bring AI to your data where you need it most—whether that’s in student labs, lecture rooms, or remote learning settings.

This flexible approach ensures you can maintain control while fostering innovation, enhancing student experiences, and streamlining administration.

## Our Hybrid AI model brings innovation to everyone

 <b>Personal</b>	 <b>Enterprise</b>	 <b>Public</b>
<p>Lenovo puts AI in your hands with smart devices like ThinkPads powered by AMD Ryzen™ AI PRO processors.</p> <ul style="list-style-type: none"><li>• <b>Personalized:</b> Create customized learning experiences and improve personal workflows.</li><li>• <b>Protected:</b> Secure data with ThinkShield + AMD PRO Security at every level.</li><li>• <b>Productive:</b> Streamline mundane tasks and accelerate decision-making.</li></ul>	<p>Deploy and scale AI solutions on-premises while maintaining compliance with FERPA and GDPR across all devices.</p> <ul style="list-style-type: none"><li>• <b>Innovate:</b> Lead with industry-best AI solutions for rapid insights.</li><li>• <b>Transform:</b> Scale smart solutions for enhanced productivity.</li><li>• <b>Take care:</b> Ensure ethical, secure AI integration.</li></ul>	<p>Leverage cloud AI through assistants, chatbots, and open-source frameworks to improve efficiency.</p> <ul style="list-style-type: none"><li>• <b>Custom solutions:</b> Tailor AI to boost performance and reduce costs.</li><li>• <b>Reliable systems:</b> Minimize downtime and build trust.</li><li>• <b>Enhanced experiences:</b> Drive adoption through intuitive design.</li></ul>



**Consider your options**  
See what Lenovo + AMD Ryzen™ AI PRO processors can do for you.

# The Lenovo AI portfolio

Build a scalable and sustainable AI architecture that ticks all the boxes for compliance, security, and data management while meeting the unique needs of students, educators and administrators.

## Processing power for the AI age

Rely on Lenovo AI PCs, Workstations, and Edge devices built on high-performing AMD processors. AMD XDNA™ technology gives you the ultimate in AI processing efficiency to transform your education ecosystem.

**AMD**  
**RYZEN AI**  
PRO 300 Series

## The Lenovo AI portfolio

### Lenovo ThinkStation P8

AMD Ryzen™ Threadripper™ PRO 7000  
WX-Series processor

A workstation with game-changing power and speed. Perfect for multi-threaded applications and intense workloads.



ThinkStation P8

### Lenovo ThinkPad P16s

AMD Ryzen™ AI PRO 300 Series processors

The perfect blend of premium power and portability, optimized for the next generation of AI experiences.



ThinkPad P16s  
Gen 4

### Lenovo ThinkPad T14

AMD Ryzen™ AI PRO processors

The first ever x86 Lenovo ThinkPad next-gen AI PC offering 50 TOPS. Enjoy AI processing power with at a new level.



ThinkPad T14s  
Gen 6



### Lenovo ThinkEdge SE455

Powered by the AMD EPYC™ 8004 Series processor

Optimized for AI yet highly efficient, this server delivers exceptional performance per Watt.

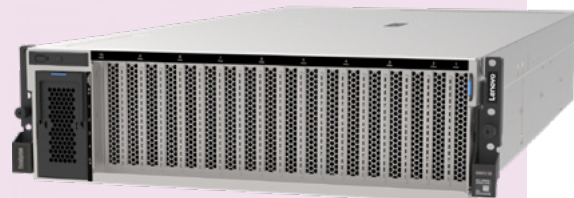


SE455 V3

### Lenovo ThinkSystem SR673

Powered by AMD EPYC™ 9000 Series processors

GPU-rich server with reliable, scalable, high-performance that significantly accelerates AI and GenAI.



SR673 V3

### Lenovo ThinkAgile HX665

Powered by AMD EPYC™ 9000 Series processors

A powerful appliance that eases the move from bare metal to hyperconverged environments.



HX665 V3

## Lenovo High-Performance Computing (HPC)

Supercomputers are increasingly vital in education to process large datasets, advance research and enable real-time data analysis for academic insights.

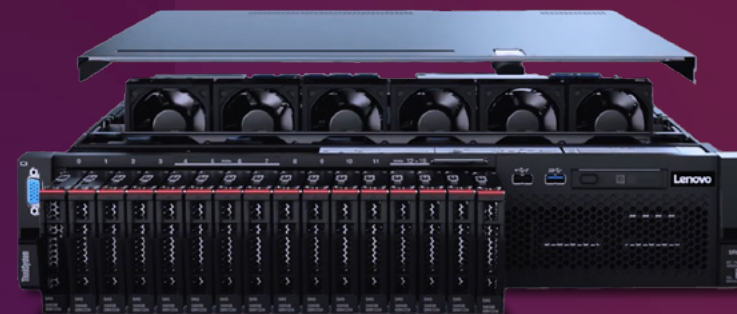
Lenovo is the world's #1 supercomputing provider and uniquely offers the TruScale for HPC service, with flexible scaling and predictable billing, backed by global expertise to meet the evolving needs of Higher Education.



## Neptune™ Liquid Cooling

AI technology requires more system power than ever, putting an increased strain on energy demands.

Lenovo's Neptune™ Liquid Cooling helps you increase your power efficiency by up to 40% while providing outstanding performance and reliability of critical AI systems, ensuring that these systems can operate optimally without overheating or downtime.



# The pace of change

Lenovo is passionate about protecting and supporting your hybrid AI stack, from design to long-life service.

## AI Center of Excellence

The Lenovo AI Center of Excellence (AI CoE) is designed to help you put AI to work quickly, cost-effectively and at scale.

This approach extends to workshops, proof of concepts, benchmarking, and performance optimization. Together with our global partner ecosystem, we can help you reduce time to value and risk.

Lenovo has strategically positioned AI data scientists, solution architects, engineers, and industry consortiums worldwide.



## Lenovo AI Innovators program

We're thrilled to bring together best-in-class Independent Software Vendors (ISVs) for AI software, hardware, and solutions. We have over 50 AI Innovators in the program, providing more than 165 solutions.

We support these partners with direct access to our AI Discover Labs and a collaborative platform where they can develop, deploy and validate their AI solutions with the support of cutting-edge tools, resources and expertise.

- Find specific enterprise AI solutions for Higher Education
- Execute proof of concept and comply with Lenovo's Responsible AI guidelines
- Train your own data without risking confidentiality



## Smart services to embrace AI your way

**Lenovo AI Fast Start:** Access AI assets, experts, and partners to rapidly build and deploy GenAI solutions tailored to your institution.

**Lenovo TruScale Device as a Service (DaaS):** Get scalable AI devices through a predictable subscription model, enabling quick upgrades without upfront costs to future-proof your technology investments.

**Lenovo TruScale Infrastructure as a Service (IaaS):** Experience on-premises infrastructure with cloud-like flexibility, including hybrid environments, infinite storage, and high-performance computing.

TruScale for GPU optimizes AI resources through advanced workload orchestration, while Asset Recovery Services ensure environmentally responsible technology lifecycle management. This flexibility is crucial as AI technology rapidly evolves, giving you the broadest range of deployment options.

### **Lenovo Premier Support Plus:**

Let Lenovo provide complete peace of mind, with direct access to advanced technicians who don't rely on scripts to solve hardware, software or service issues.

And if your concern can't be solved remotely, our team will provide on-site support on the next business day.

This faster issue resolution also includes accidental damage protection, to keep productivity to the max.

### **Lenovo Device Orchestration:**

A next-generation endpoint management solution designed to help IT teams optimize their device fleet's health, security and performance. When paired with Lenovo IT Assist, a cloud-based AI assistant, IT teams can further empower organizations to manage their device fleet using AI to quickly highlight device insights, generate custom charts and manage system updates.





# Delivering intelligent sustainability

Lenovo's commitment to sustainability drives every decision we make, helping educational institutions achieve their environmental goals while maximizing technology investments.

Our comprehensive approach includes Asset Recovery Services for device lifecycle management, Neptune™ Liquid Cooling technology that helps you increase your power efficiency by up to 40%, and CO<sub>2</sub> Offset Services for carbon footprint reduction. Through our LISSA tool, we ensure supply chain transparency, while our responsible AI review process helps institutions maintain compliance and ethical standards.

**Top 10**

Lenovo's ranking  
in the 2024  
Gartner Supply  
Chain Top 25.<sup>9</sup>

Since 2017, Lenovo has  
invested more than

**\$1.7  
billion**  
into AI.<sup>9</sup>





# Next steps

Start your AI journey by assessing your capabilities and identifying priorities that improve student, staff and institution success.

Lenovo will support you at every stage, from evaluating readiness to identifying quick wins and long-term value.

Visit the [AMD Education landing page](#) to learn more.

1. Student Generative AI Survey 2025, Higher Education Policy Institute.

2. AI in Education Report 2024, Carnegie Learning.

3. PNAS, Active Learning research paper, 2024.

4. Kansas State University 2024

5. Global News 2024.
6. Forbes 2024.

7. HEPI 2024.

8. Globaladmissions.com 2024.

9. Gartner, Supply Chain Top 25 for 2024.

©2025, Lenovo Group Limited. All rights reserved.

All offers subject to availability. Lenovo reserves the right to alter product offerings, prices, specifications or availability at any time without notice.

Models pictured are for illustration purpose only. Lenovo is not responsible for typographic or photographic errors. Information advertised has no contractual effect. Lenovo ThinkPad, ThinkCentre, ThinkStation, ThinkVantage, and ThinkVision are trademarks of Lenovo.

AMD

together we advance\_AI

Smarter  
technology  
for all

