

# Lenovo ThinkStation

## Lenovo ThinkStation P3 Ultra SFF Gen 2 The Evolution of Small

Lenovo



intel  
vPRO

That's the power of Intel Inside®

The Lenovo ThinkStation P3 Ultra SFF features a revolutionary form factor that is redefining the power of small. Supporting the latest Intel® Core™ Ultra processors (Series 2) with an integrated NPU, up to NVIDIA RTX™ 4000 SFF Ada Generation graphics, super-fast memory, and cutting-edge storage, this workstation breaks new ground by delivering AI-optimized performance and ultimate flexibility in a chassis less than four liters in total volume.

Processor:

**5.7GHz  
24 Cores**

Up to Intel Core Ultra 9 processor (Series 2) with Intel vPro®

Graphics:

**NVIDIA RTX  
4000 SFF Ada**

20GB GDDR6 Memory

Memory:

**128GB  
DDR5**

Up to 6400MT/s  
ECC or non-ECC<sup>1</sup>

AI:

**335  
TOPS**

CPU package: 36 TOPS  
GPU: 307 TOPS  
Total: 335 TOPS

## Features



**Redefining the Power of Small**  
Revolutionary performance in a 3.9L compact form factor



**3 DisplayPort™ standard**  
Offering support for up to 8 displays



**AI-ready performance**  
Handles demanding AI workflows like image recognition, natural language processing, and speech recognition



**Flexible Expansion Options**  
Easily add GPUs, storage, or other upgrades to meet your evolving workflow needs.

# Lenovo ThinkStation P3 Ultra SFF Gen 2 Product Specifications<sup>^</sup>

## Performance

### Processor

Up to Intel Core Ultra 9 processor (Series 2) with Intel vPro (up to 24 cores, up to 5.7GHz)<sup>+</sup>

### Chipset

Intel W880

### Graphics

Discrete:  
Up to NVIDIA RTX 4000 SFF Ada 20GB GDDR6 Memory

Processor Integrated:  
Intel Graphics

### AI

CPU: up to 15 TOPS

NPU: 13 TOPS

iGPU: 8 TOPS

GPU: up to 307 TOPS

Total: up to 335 TOPS

### Total Memory

Up to 128GB DDR5, 6400MT/s<sup>1</sup>

### Memory DIMM Capacity

8GB / 16GB / 32GB / 48GB / 64GB non-ECC CSODIMM

16GB / 32GB<sup>+</sup> / 48GB<sup>+</sup> ECC CSODIMM

8GB<sup>+</sup> / 16GB<sup>+</sup> / 32GB / 48GB non-ECC SODIMM

16GB / 32GB / 48GB ECC SODIMM

SoDIMM / CSODIMM Slots

### Storage Type Capacity

M.2 PCIe<sup>®</sup> NVMe SSD up to 4TB

### Total Storage

Up to 4 Total Drives

Max M.2 = 4 (16TB)<sup>2</sup>

### RAID

M.2 = 0/1/5

### Power Supply

170W Slim, 230W, 330W 90% efficient

## Connectivity

### Front Ports

- (1) USB-A (10Gbps)<sup>\*</sup>
- (2) USB4 Type-C (20Gbps)<sup>\*</sup> (Data Transfer Only)

- (1) Combo Audio/Mic Jack

### Rear Ports

- (4) USB-A (10Gbps)<sup>\*</sup>
- (3) DisplayPort 1.4
- (1) RJ-45 Gigabit Ethernet

### Optional Rear Ports<sup>3</sup>

- (1) Thunderbolt™ 4

- (1) or (4) Serial

### WLAN

Intel Wi-Fi<sup>®</sup> 7 BE200 2x2be + Bluetooth<sup>®</sup> 5.4 Intel vPro<sup>®4</sup>

### Expansion Slots<sup>5</sup>

- (2) PCIe 4.0 x16 + (1) PCIe 4.0 x8 or
- (1) PCIe 4.0 x16 + (1) PCIe 4.0 x8

## Design

### Dimensions (WxDxH)

(mm): 87 x 223 x 202

(inches): 3.4 x 8.7 x 7.9

### Weight

Starting at: 3.96lbs (1.8kg)

<sup>+</sup> Available Q3 2025.

<sup>1</sup> Memory spec transfer rate listed; system support transfer rate may vary by configuration.

<sup>2</sup> Optional M.2 Add In Card (up to 1 x 4TB) adds additional storage.

<sup>3</sup> Optional, additional hardware may be required.

<sup>4</sup> Bluetooth 5.4 is hardware ready but may run at a lower version due to OS limitation.

<sup>5</sup> Expansion slot options depend on riser card selection.

<sup>^</sup> For a full list of configuration details, specifications, and any limitations please visit: <https://psref.lenovo.com>

<sup>\*</sup> USB port transfer speeds are approximate and depend on many factors, such as processing capability of host/peripheral devices, file attributes, system configuration and operating environments; actual speeds will vary and may be less than expected.



intel  
vPRO

That's the power of Intel Inside<sup>®</sup>

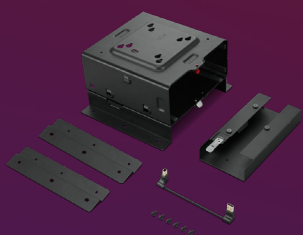
Smarter  
technology  
for all

Lenovo

## Lenovo Options & Accessories



ThinkVision P24QD-40 Display



ThinkStation Under Desk Mount



NVIDIA RTX 4000 SFF Ada Graphics Card



Scan for system overview, supported components, and technical specifications.

For a full list of accessories and options, please visit: [accsmartfind.lenovo.com](https://accsmartfind.lenovo.com)

For more details on ThinkStation and ThinkPad, please visit: [lenovo.com/workstations](https://lenovo.com/workstations)

Visit us on social media: [#lenovoworkstations](https://twitter.com/lenovoworkstations)



May 2025 ©Lenovo. All rights reserved. Lenovo is not responsible for photographic or typographic errors. Lenovo makes no representation or warranty regarding third-party products or services. LENOVO, ThinkStation, and ThinkPad are trademarks of Lenovo.

## Lenovo ThinkStation P3 Ultra SFF Gen 2 General Specifications<sup>^</sup>

### Software

#### Operating System

Windows 11 Pro  
Windows 11 IoT Enterprise LTSC  
Windows 11 Home  
Ubuntu<sup>®</sup> Linux<sup>®1</sup>  
Red Hat<sup>®</sup> Enterprise Linux<sup>®2</sup>

#### Windows Preloads

Lenovo Commercial Vantage

#### ISV Certifications<sup>3</sup>

Including Altair<sup>®</sup>, ANSYS<sup>®</sup>, AutoCAD<sup>®</sup>, AVID<sup>®</sup>, Barco<sup>®</sup>, Bentley<sup>®</sup>, Dassault<sup>®</sup>, Nemetschek<sup>®</sup>, PTC<sup>®</sup>, Siemens<sup>®</sup>

For a complete list of ISV certifications visit <https://thinkworkstations.com/>

### Security

Intel vPro security

#### ThinkShield

TPM 2.0  
Self-healing BIOS  
Power On Password  
UEFI Secure Boot  
Kensington Lock Slot

### Sustainability

#### System

85% PCC recycled plastic in Front, Rear Bezel

35% PCC recycled plastic inside chassis

#### Packaging

Carton: 90% Recycled and/or FSC certified content<sup>4</sup>

Cushion: 90% Recycled EPE

#### Certifications

ENERGY STAR<sup>®5</sup> 9.0

EPEAT<sup>®6</sup> Gold

RoHS Compliant

TCO 10.0

## Recommended Services

Lenovo offers a comprehensive portfolio of services to support and protect your ThinkStation investment—so you can focus on your business, not your IT.

#### Premier Support

Bypass phone menus and scripted troubleshooting to access advanced-level technicians with the expertise needed to quickly diagnose and solve problems.

#### Warranty Extensions (1 to 5 years total duration)

This fixed-term, fixed-cost service helps you accurately budget for PC expenses, protect your valuable investment, and potentially lower the cost of ownership over time.

#### Warranty Upgrades—Onsite and Next Business Day

Maximizes PC uptime and productivity by providing convenient, fast repair service the next business day.

1 Select Ubuntu versions available via preload.

2 Red Hat Enterprise Linux select versions certified.

3 Available on select models.

4 Packaging composed of recycled, and/or biobased, and/or sustainably forested content.

5 Certification available on select models.

6 Certification available on select models; EPEAT registered where applicable. EPEAT registration varies by country. See [www.epeat.net](http://www.epeat.net) for registration status by country.

<sup>^</sup> For a full list of configuration details please visit: <https://psref.lenovo.com>



intel  
vPRO

NVIDIA<sup>®</sup> is a trademark and/or registered trademark of NVIDIA Corporation in the U.S. and other countries. Intel, Intel vPro<sup>®</sup>, and Core are trademarks of Intel Corporation or its subsidiaries. Linux is the registered trademark of Linus Torvalds in the U.S. and other countries. Ubuntu is a registered trademark of Canonical Ltd. Microsoft and Windows are registered trademarks of Microsoft Corporation. USB-C is a registered trademark of USB Implementers Forum. Other company, product, and service names may be trademarks or service marks of others.

That's the power of Intel Inside<sup>®</sup>

Lenovo